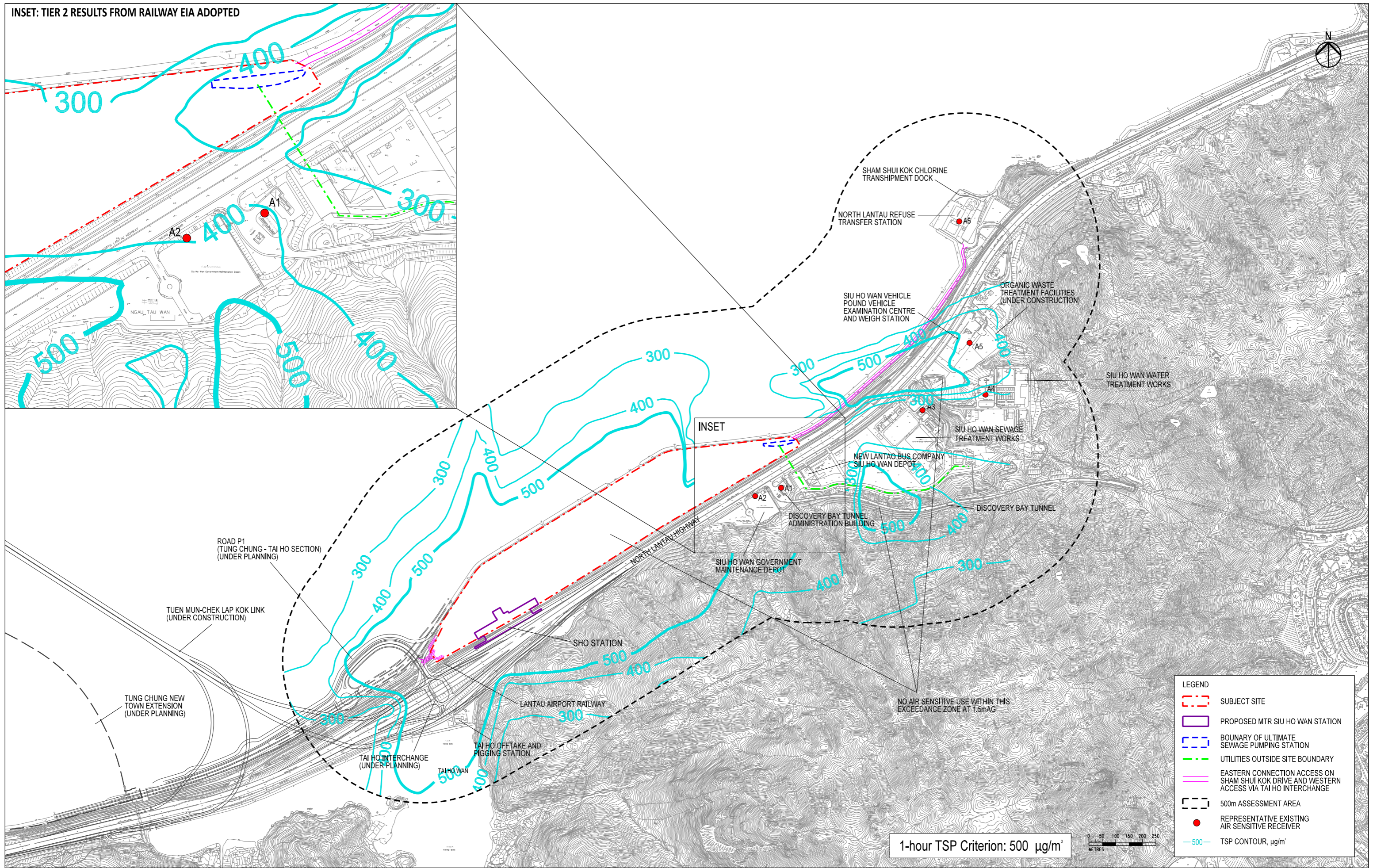


INSET: TIER 2 RESULTS FROM RAILWAY EIA ADOPTED



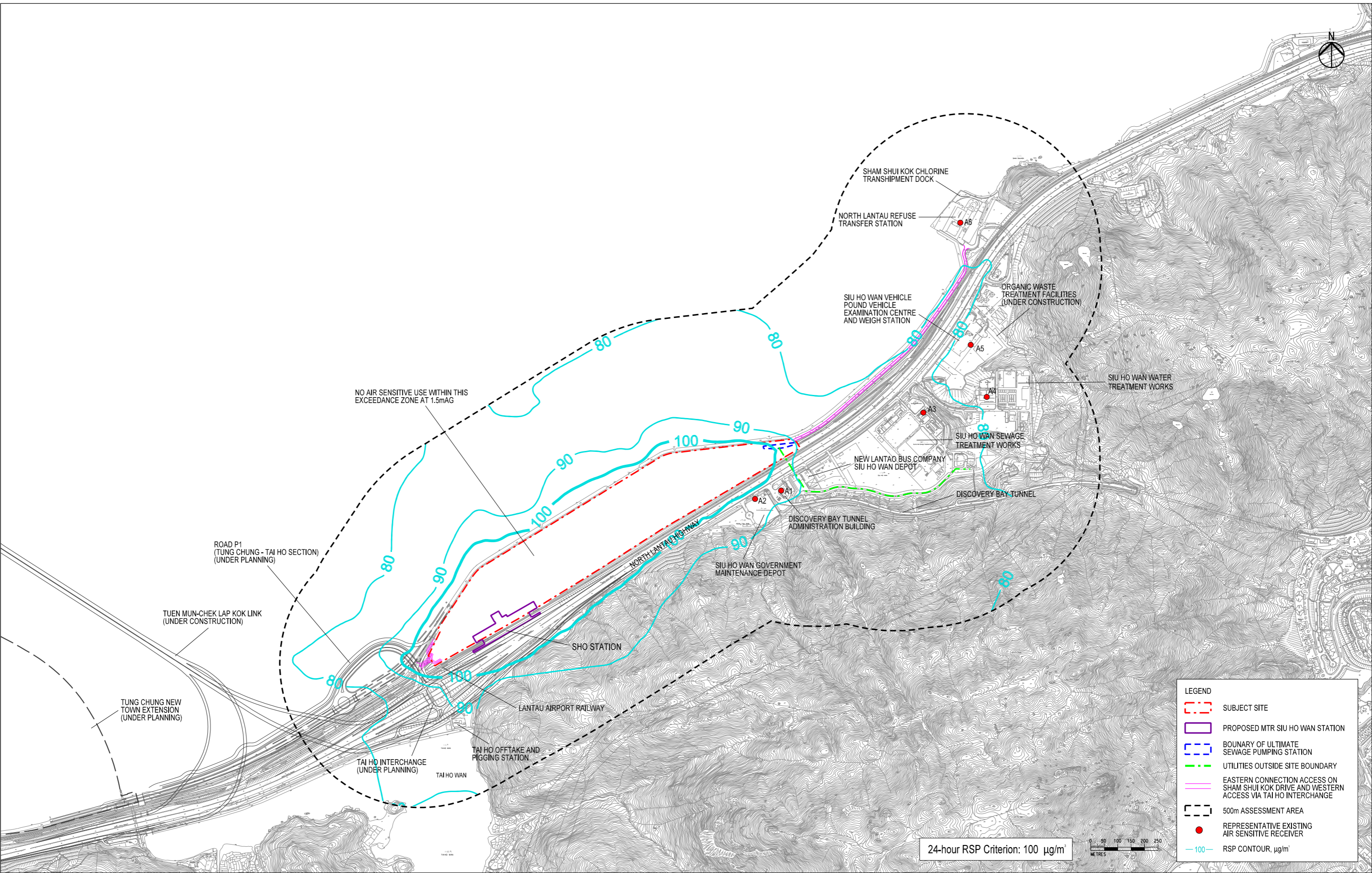
ARUP

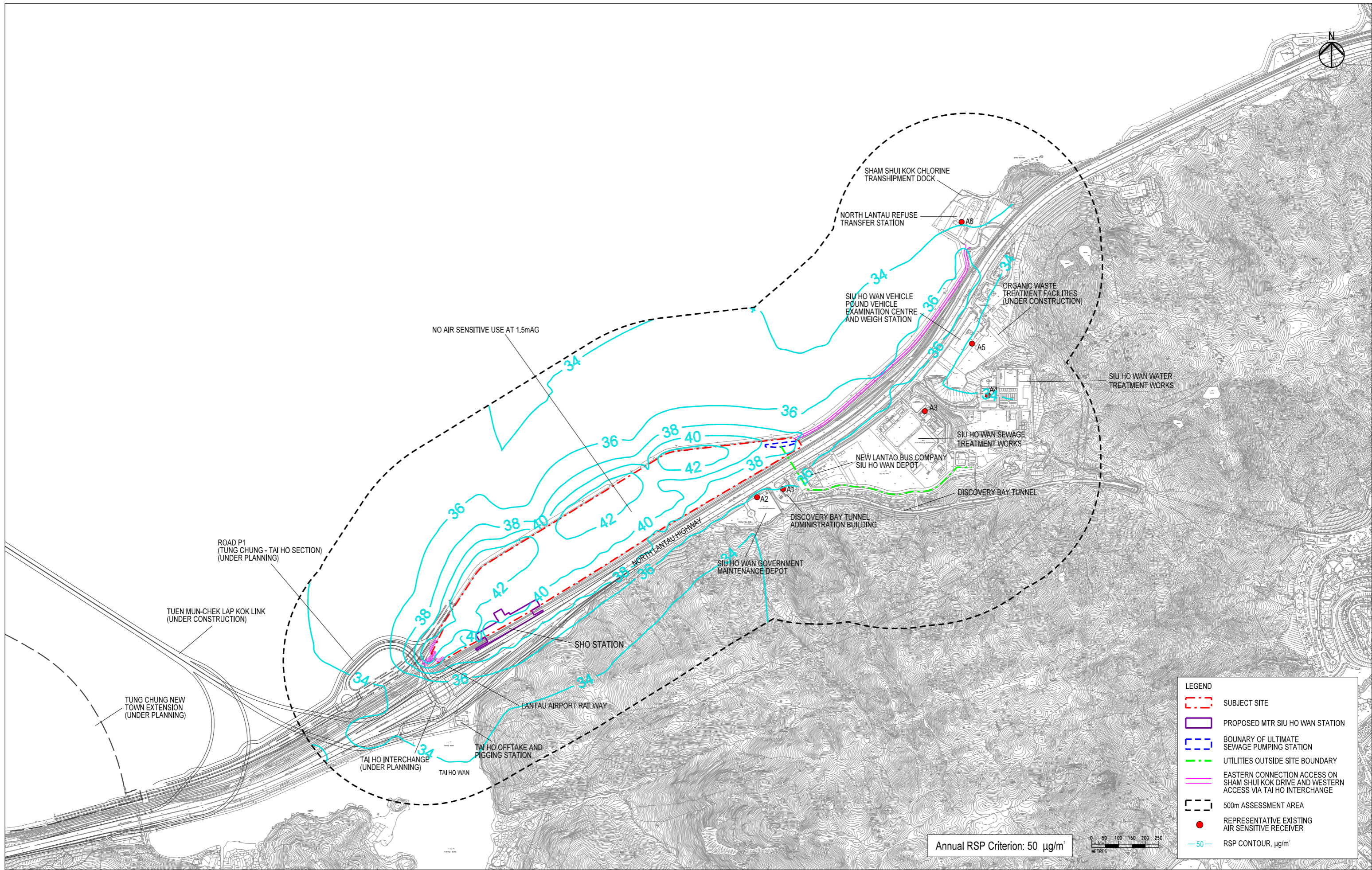
Proposed Comprehensive Residential and Commercial Development atop Siu Ho Wan Depot  
 CONTOURS OF CUMULATIVE MITIGATED MAXIMUM 1-HOUR TSP CONCENTRATION AT 1.5m ABOVE GROUND  
 (CONSTRUCTION PHASE)



SCALE: AS SHOWN  
 DATE: JUN 2017

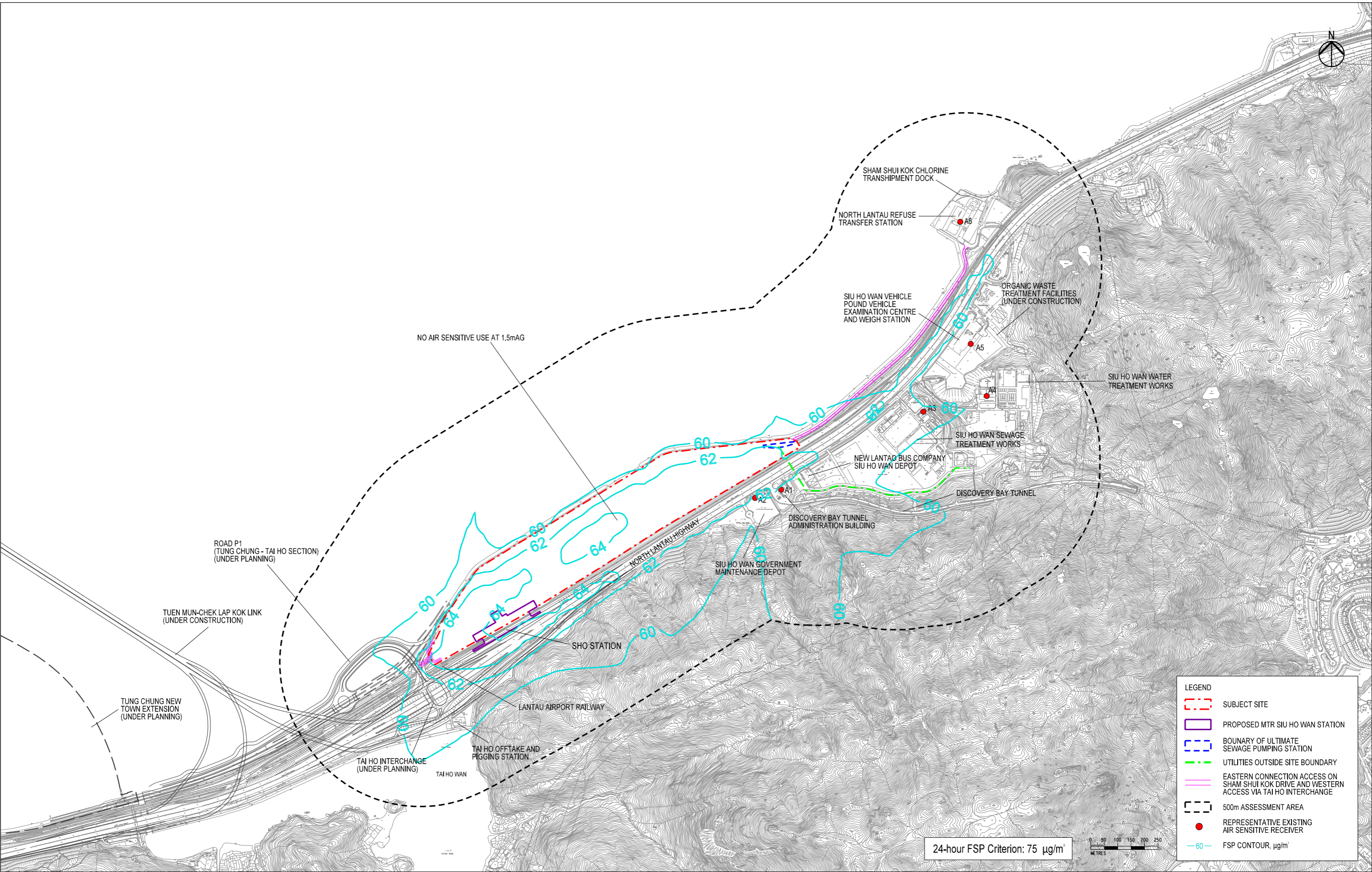
FIGURE No.  
 3.5a

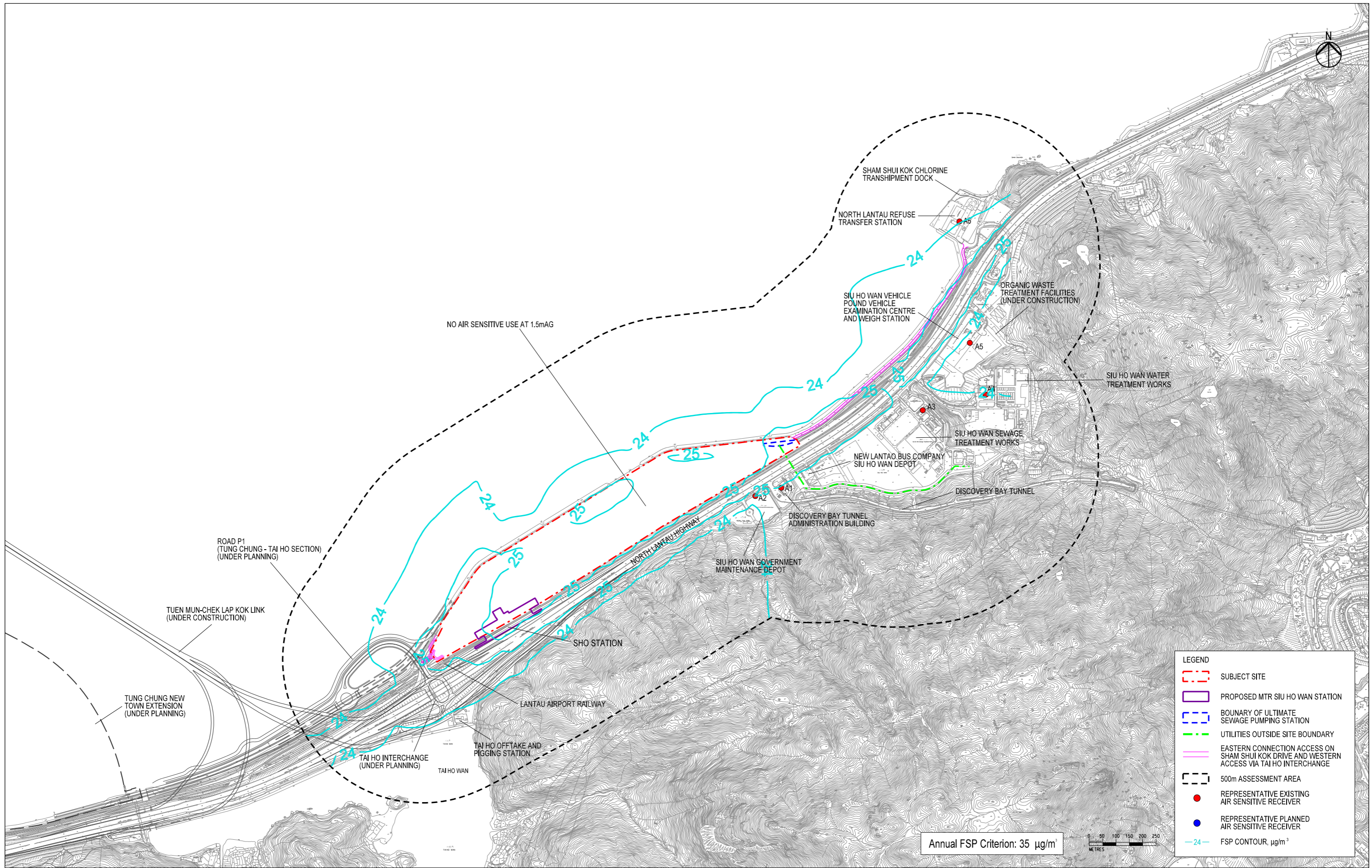


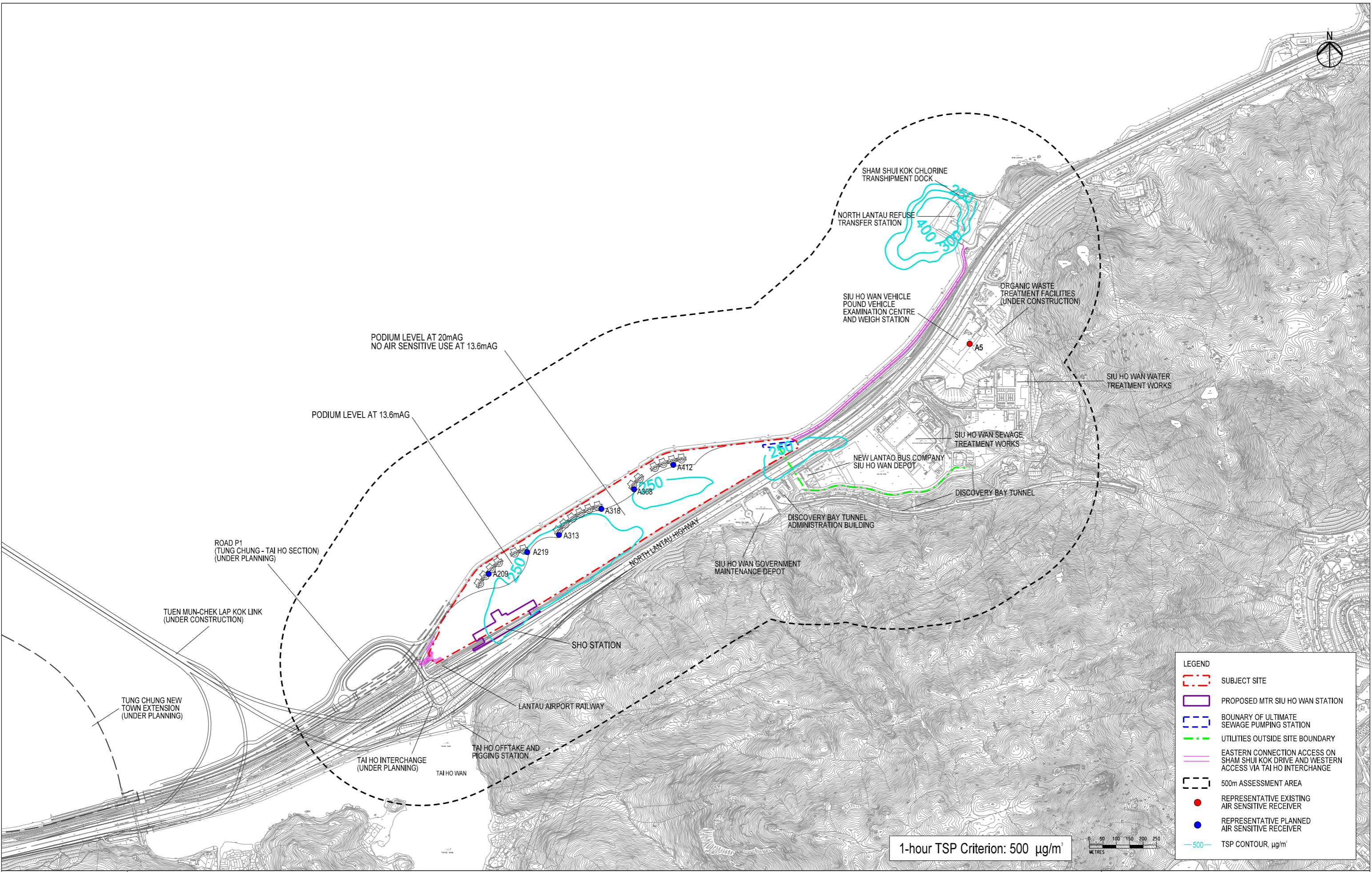


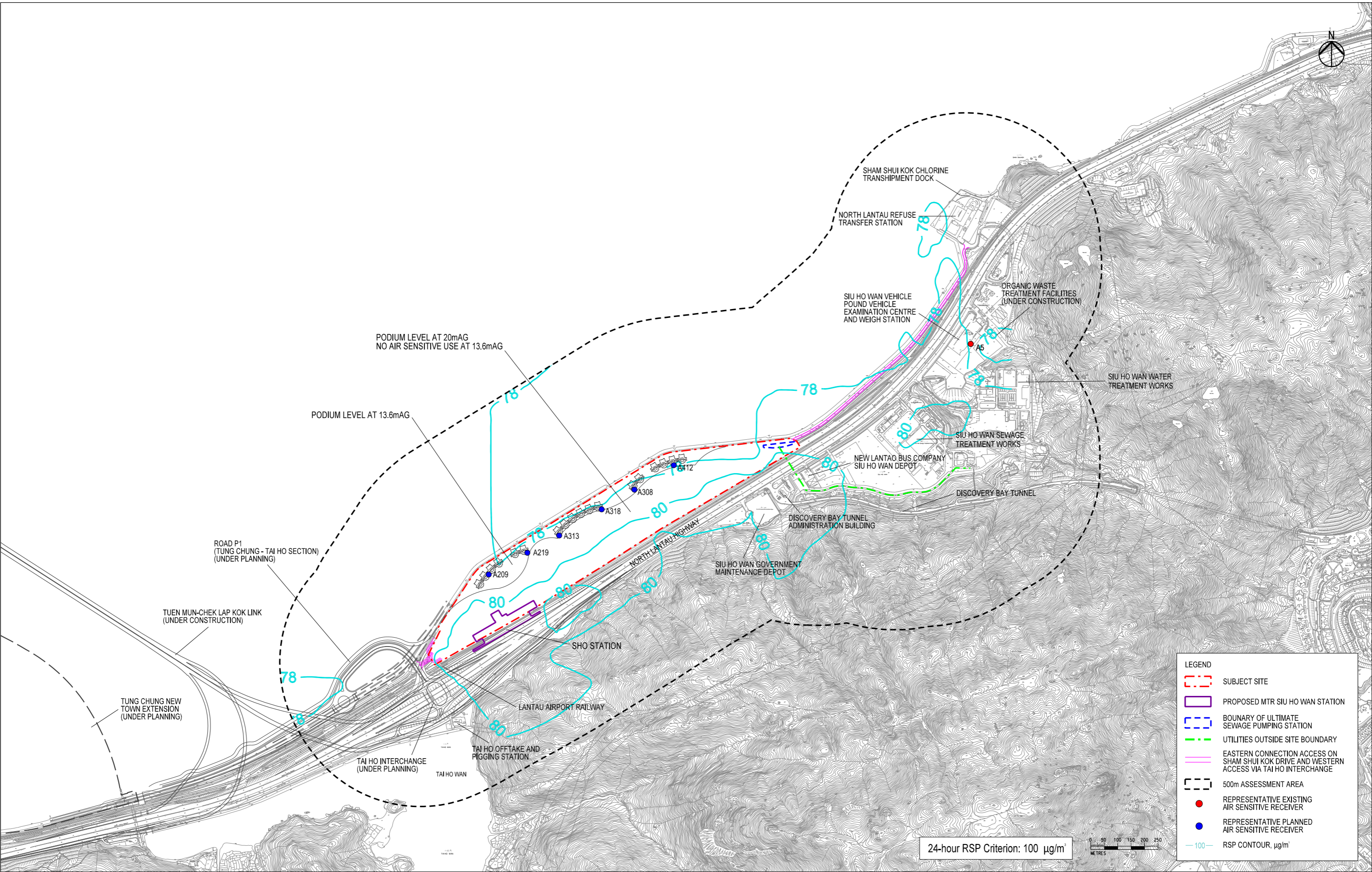
Proposed Comprehensive Residential and Commercial Development atop Siu Ho Wan Depot  
 CONTOURS OF CUMULATIVE MITIGATED ANNUAL RSP CONCENTRATION AT 1.5m ABOVE GROUND  
 (CONSTRUCTION PHASE)

Annual RSP Criterion: 50 µg/m<sup>3</sup>

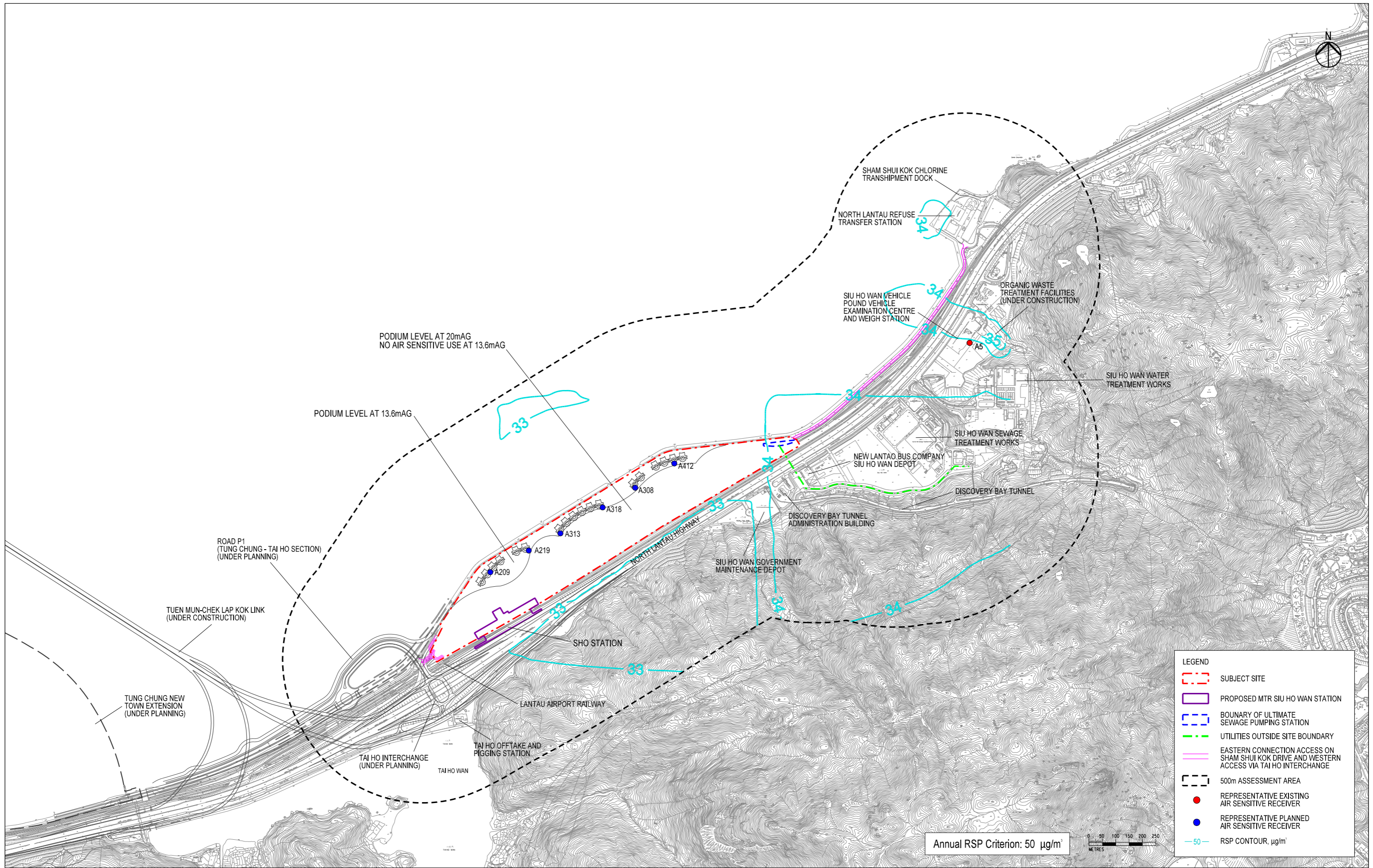




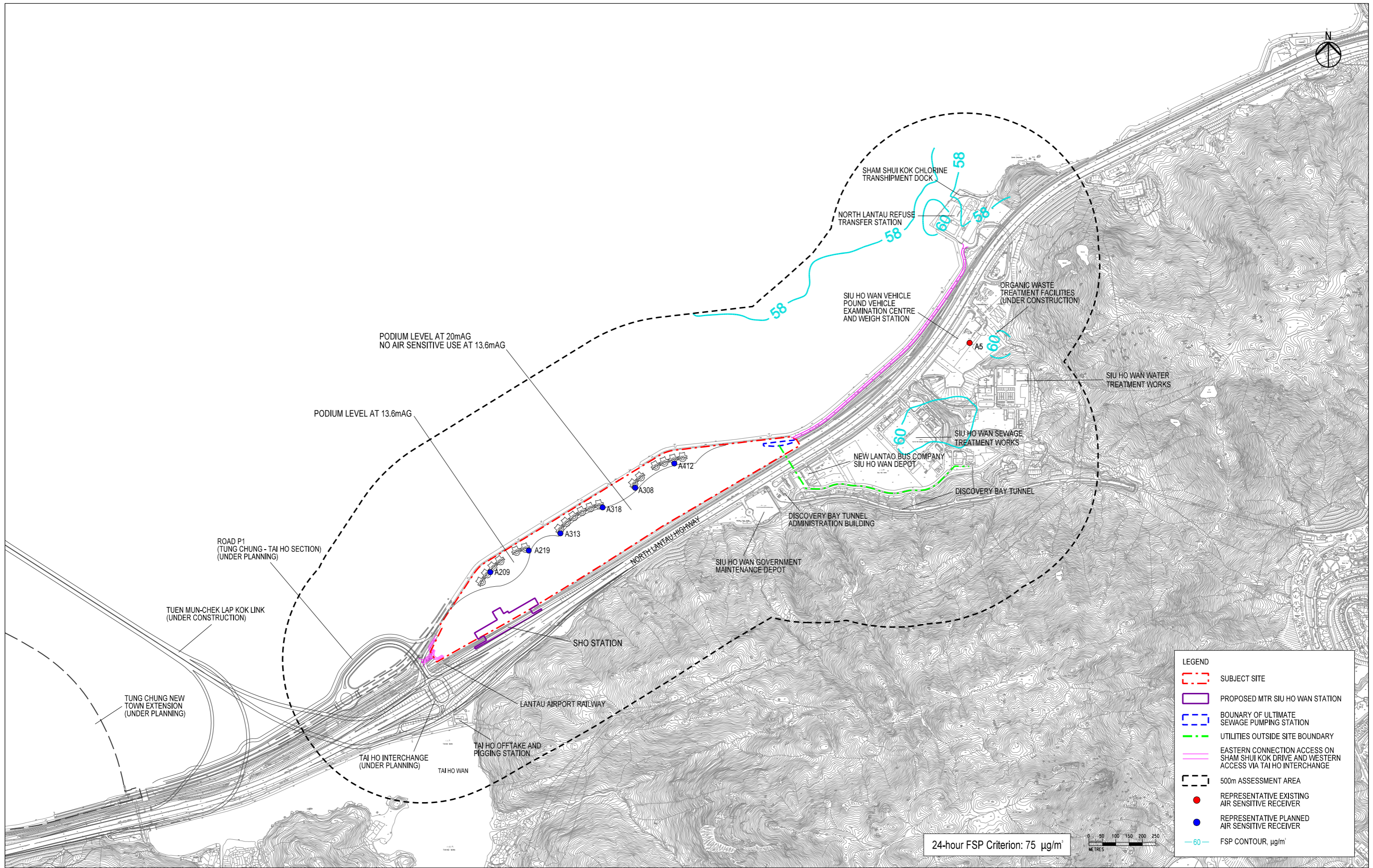


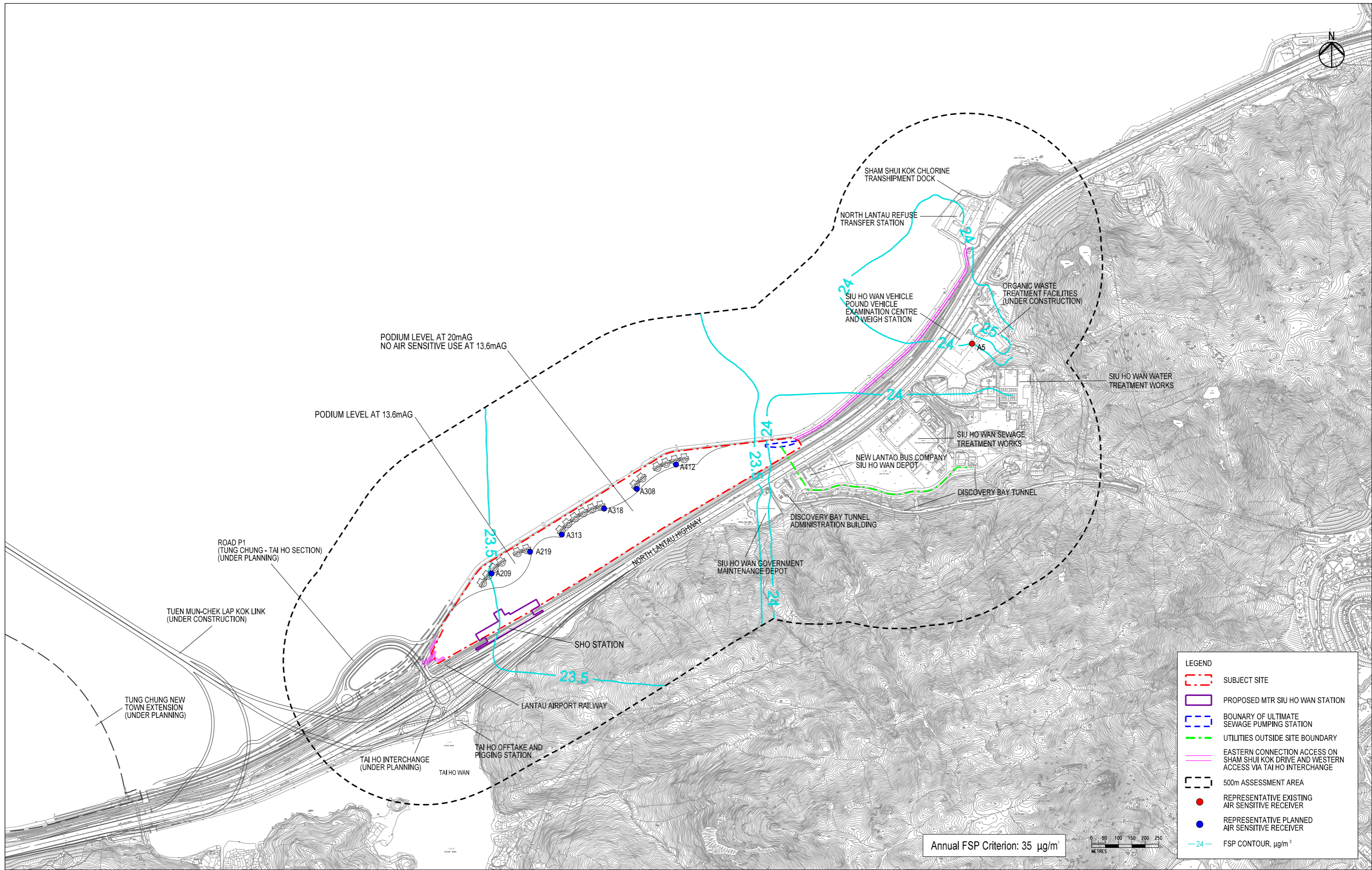


24-hour RSP Criterion: 100  $\mu\text{g}/\text{m}^3$









Annual FSP Criterion: 35  $\mu\text{g}/\text{m}^3$