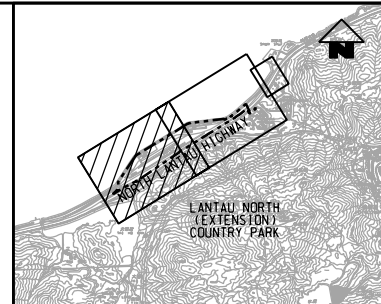


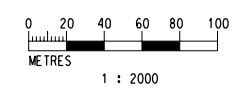
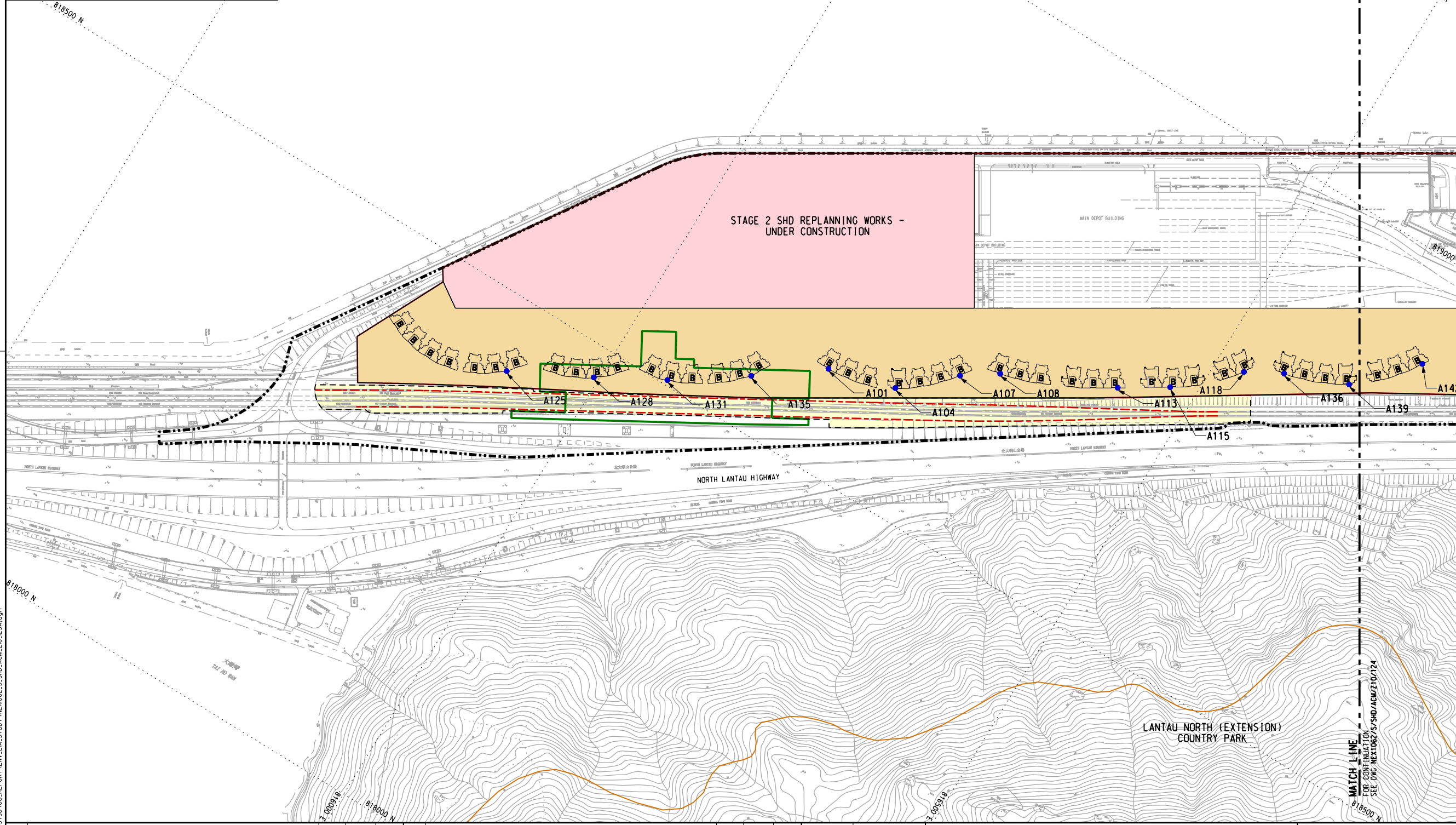
ASR	DESCRIPTION
A101	
A104	
A107	
A108	PROPOSED DEVELOPMENT ATOP SIU HO WAN DEPOT (STAGE 1A)
A113	
A115	
A118	
A125	
A128	PROPOSED DEVELOPMENT ATOP SIU HO WAN DEPOT (STAGE 1B)
A131	
A135	
A136	
A139	
A142	PROPOSED DEVELOPMENT ATOP SIU HO WAN DEPOT (STAGE 1C)
A143	
A146	
A149	
A1	DISCOVERY BAY TUNNEL ADMINISTRATION BUILDING
A2	SIU HO WAN GOVERNMENT MAINTENANCE DEPOT
A3	SIU HO WAN SEWAGE TREATMENT WORKS ADMINISTRATION BUILDING
A4	SIU HO WAN WATER TREATMENT WORKS ADMINISTRATION BUILDING
A5	ORGANIC WASTE TREATMENT FACILITIES MAIN BUILDING
A6	NORTH LANTAU REFUSE TRANSFER STATION OFFICE



KEY PLAN
(SCALE 1 : 50000)

NOTE:
1. THIS DRAWING TO BE READ IN CONJUNCTION WITH DRAWING NO. NEX1062/S/SHD/ACM/Z10/124.

- LEGEND:**
- EXISTING/REPROVISIONED SHD BOUNDARY
 - MODIFIED TCL/AEL ALIGNMENT
 - SCHEME BOUNDARY
 - LANTAU NORTH (EXTENSION) COUNTRY PARK
 - PROPOSED SHD (INDICATIVE)
 - ASSOCIATED TRACKWORKS AREA
 - STAGE 1 SHD REPLANNING WORKS
 - STAGE 2 SHD REPLANNING WORKS
 - RESIDENTIAL TOWER TYPE B
 - RESIDENTIAL TOWER MODIFIED LAYOUT FOR TYPE B
 - AIR QUALITY SENSITIVE RECEIVER
 - AIR QUALITY ASSESSMENT POINT



P:\Project\15.60493798\01.CAD_ADMIN\02_UTILIZATION_PLOT_DRIVER\13.BW.COL_SYSTEM.STD.PLT
 PLOTTED BY: LHM
 2017/9/24 10:23:16
 P:\Project\15.60493798\06.REPORT\ENV\ENL\STUDY\NEX1062.S.SHD.ACM.Z10.123A.dgn

REV	DESCRIPTION	BY	DATE	APPROVED	REV	DESCRIPTION	BY	DATE	APPROVED
A	PRELIMINARY DESIGN REPORT ISSUE	SN	08SEP16	HL					

DRAWN	ZENG FU XIU
DESIGNED	ANTHEA FUNG
CHECKED	SAM NG
APPROVED	HL
DATE	08/SEP/2016

MTR

SIU HO WAN DEPOT

AECOM in association with **Aedas**

CADD REF. NEX1062.S.SHD.ACM.Z10.123A.dgn

TITLE		SCALE	DRAWING NO.	REV.
SIU HO WAN STATION AND SIU HO WAN DEPOT REPLANNING WORKS LOCATIONS OF REPRESENTATIVE AIR QUALITY ASSESSMENT POINTS UNDER STAGE 2 SHD REPLANNING WORKS (SHEET 1 OF 2)		1 : 2000 @ A1	NEX1062/S/SHD/ACM/Z10/123	A