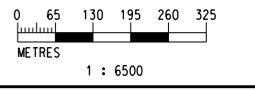
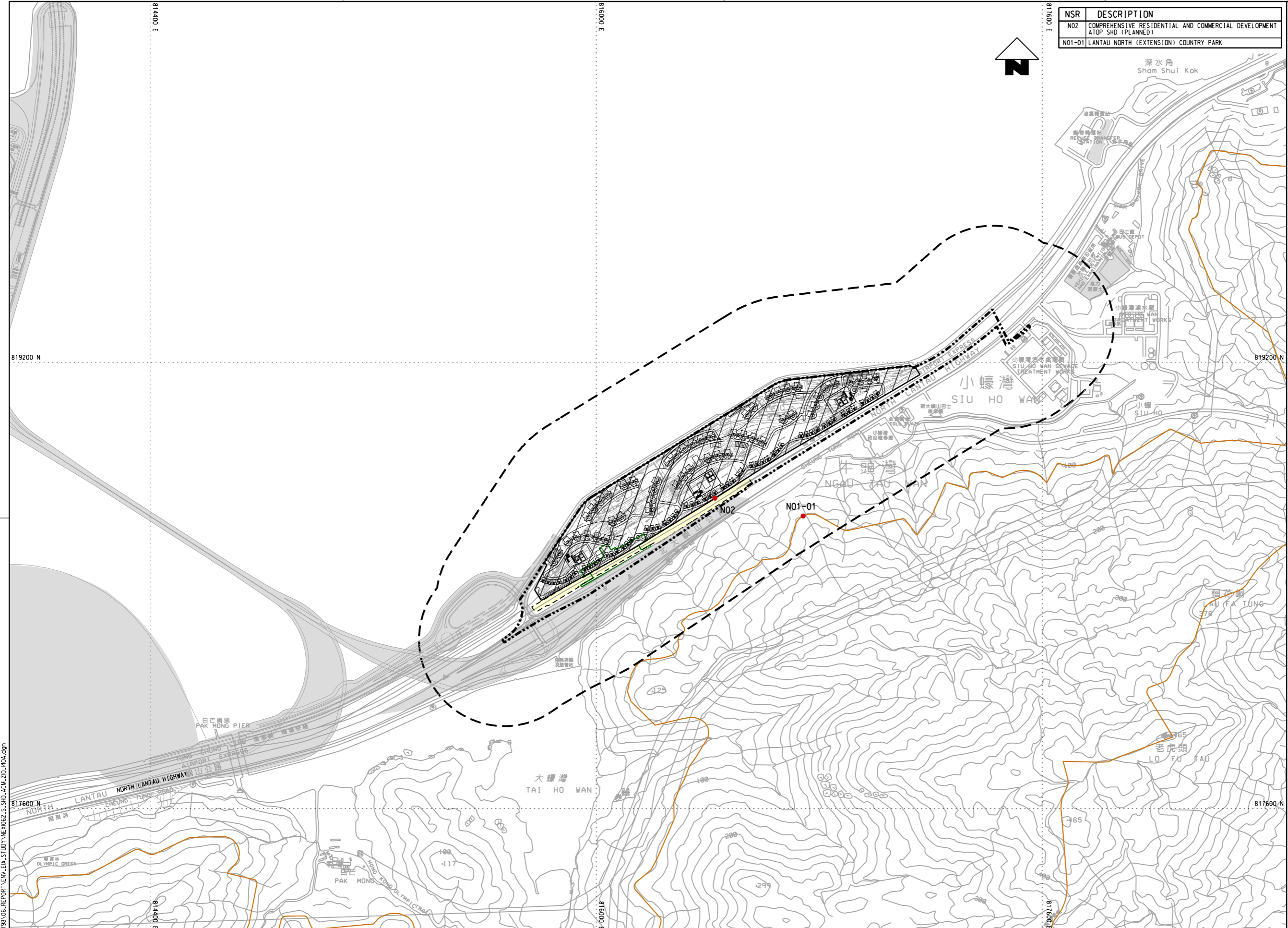


P:\Projects\60493798\01_CAD_ADMIN\02_UTILIZATION_PLOT_DRIVER\3.BW.COL.SYSTEM.STD.PLT
 PRINTED BY: LHM 2017/6/7 16:24:33
 P:\Projects\60493798\06_REPORT\ENV\ENL\STUDY\NE\02_S.SHD_ACM_Z10_140A.dgn

NSR	DESCRIPTION
N02	COMPREHENSIVE RESIDENTIAL AND COMMERCIAL DEVELOPMENT ATOP SHD (PLANNED)
N01-01	LANTAU NORTH (EXTENSION) COUNTRY PARK

LEGEND:

- SCHEME BOUNDARY
- LANTAU NORTH (EXTENSION) COUNTRY PARK
- DEVELOPMENT UNDER PLANNING OR UNDER CONSTRUCTION
- COMPREHENSIVE RESIDENTIAL AND COMMERCIAL DEVELOPMENT ATOP SHD (PLANNED) AND SHD REPLANNING WORKS (PLANNED)
- 300m ASSESSMENT AREA
- ASSOCIATED TRACKWORKS AREA
- PROPOSED SHD (INDICATIVE)
- N01-01 NOISE SENSITIVE RECEIVER
- RESIDENTIAL TOWER TYPE A
- RESIDENTIAL TOWER TYPE B
- RESIDENTIAL TOWER MODIFIED LAYOUT FOR TYPE B



REV	DESCRIPTION	BY	DATE	APPROVED	REV	DESCRIPTION	BY	DATE	APPROVED
A	PRELIMINARY DESIGN REPORT ISSUE	SN	05MAY16	HL					

DRAWN	ZENG FU XIU
DESIGNED	ANTHEA FUNG
CHECKED	SAM NG
APPROVED	HL
DATE	05/MAY/2016

MTR

SIU HO WAN DEPOT

AECOM in association with **Aedas**

ORIGINATOR

CADD REF. NEX1062.S.SHD.ACM.Z10.140A.dgn

TITLE		SIU HO WAN STATION AND SIU HO WAN DEPOT REPLANNING WORKS LOCATIONS OF EXISTING AND PLANNED NOISE SENSITIVE RECEIVERS	
SCALE	DRAWING NO.	REV.	
1 : 6500 @ A1	NEX1062/S/SHD/ACM/Z10/140	A	