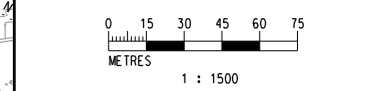
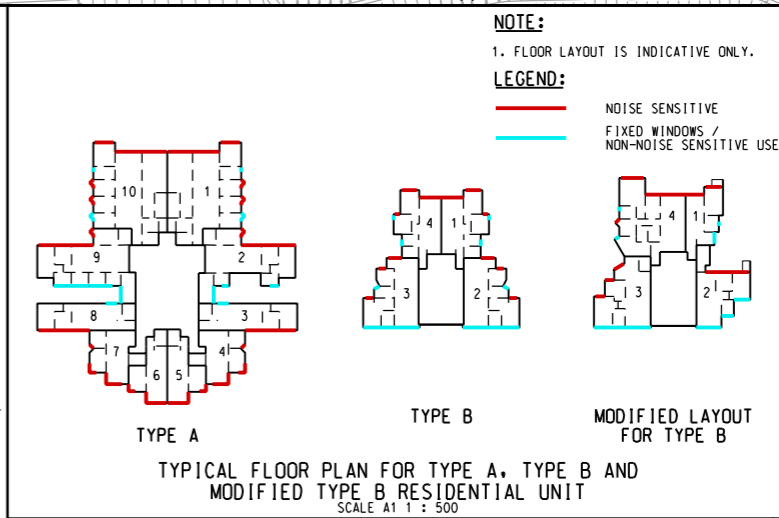
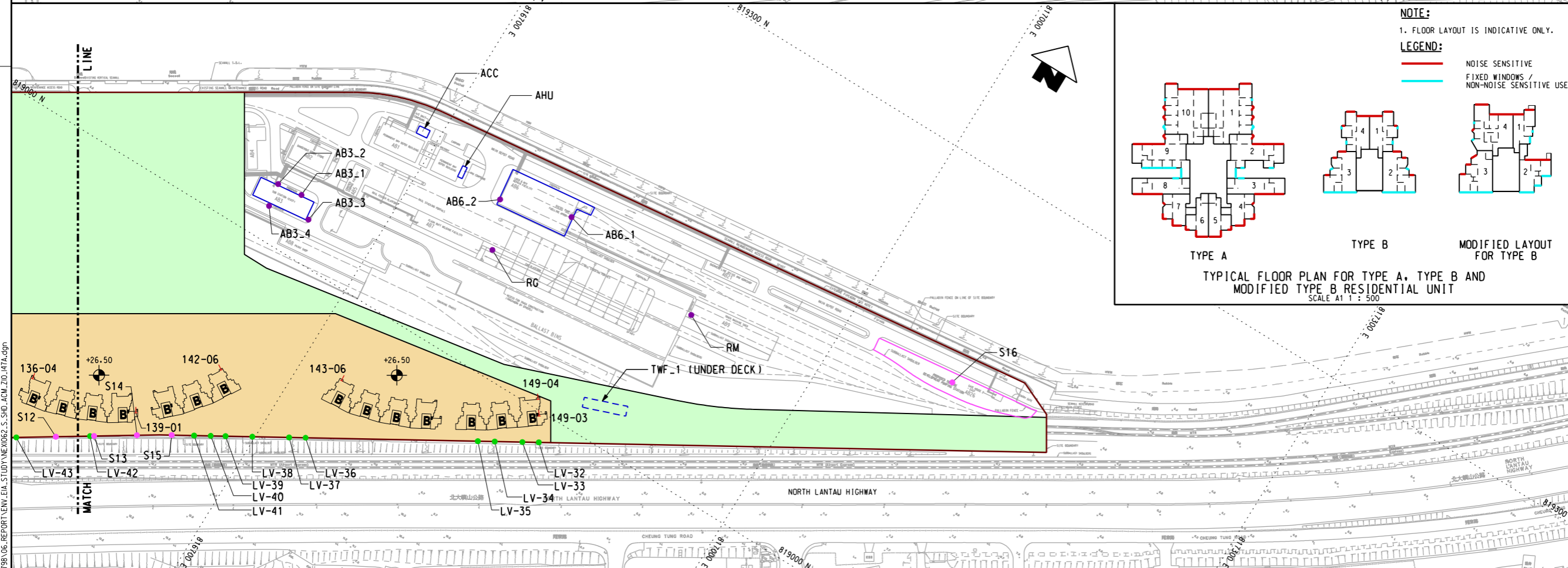


- KEY PLAN**
(SCALE 1 : 30000)
- LEGEND:**
- EXISTING/REPROVISIONED SHD BOUNDARY
 - PLANNED/REPROVISIONED BUILDING IN SHD (UNDER DECK)
 - EXISTING BUILDING IN SHD (UNDER DECK)
 - EXISTING BUILDING IN SHD
 - BOUNDARY OF ULTIMATE SEWAGE PUMPING STATION FOR SHD TOPSIDE DEVELOPMENT
 - NOISE ASSESSMENT POINT
 - VENTILATION LOUVER (PLANNED)
 - FIXED PLANT NOISE SOURCE (EXISTING)
 - FIXED PLANT NOISE SOURCE UNDER DECK (PLANNED)
 - FIXED PLANT NOISE SOURCE AT SHD TOPSIDE DEVELOPMENT (PLANNED)
 - A RESIDENTIAL TOWER TYPE A
 - B RESIDENTIAL TOWER TYPE B
 - B' RESIDENTIAL TOWER MODIFIED LAYOUT FOR TYPE B
 - STAGE 1 SHD REPLANNING WORKS
 - STAGE 2 SHD REPLANNING WORKS
 - STAGE 3 SHD REPLANNING WORKS



P:\Project\15.60493798\01.CAD_ADMIN\02.JUSTIFICATION.PLOT_DRIVER\13.BW.COL.SYSTEM.STD.PLT
 PLOT DRW: 2017/06/22 10:29:45
 MODELNAME: NEX1062/S/SHD/ACM/Z10_147A.dgn
 PLENNAME:

REV	DESCRIPTION	BY	DATE	APPROVED	REV	DESCRIPTION	BY	DATE	APPROVED
A	PRELIMINARY DESIGN REPORT ISSUE				SN	10AUG16	HL		

DRAWN ZENG FU XIU
 DESIGNED ANTHEA FUNG
 CHECKED SAM NG
 APPROVED HL
 DATE 10/AUG/2016
DO NOT SCALE DRAWINGS. ALL DIMENSIONS SHALL BE VERIFIED ON SITE.
 (C) MTR CORPORATION LIMITED 2008 COPYRIGHT IN RESPECT OF THIS DRAWING / DOCUMENT IS OWNED BY THE MTR CORPORATION LIMITED OF HONG KONG. NO REPRODUCTION OF THE DRAWING / DOCUMENT OR ANY PART BY WHATEVER MEANS IS PERMITTED WITHOUT THE PRIOR WRITTEN CONSENT OF THE MTR CORPORATION LIMITED.

MTR

SIU HO WAN DEPOT

AECOM in association with **Aedas**

ORIGINATOR

CADD REF. NEX1062.S_SHD_ACM.Z10_147A.dgn

TITLE
SIU HO WAN STATION AND SIU HO WAN DEPOT
REPLANNING WORKS
LOCATIONS OF FIXED PLANT NOISE SOURCES,
VENTILATION LOUVERS AND REPRESENTATIVE
NOISE ASSESSMENT POINTS - ASSESSMENT SCENARIO 2

SCALE 1 : 1500 @ A1
DRAWING NO. NEX1062/S/SHD/ACM/Z10/147
REV. A