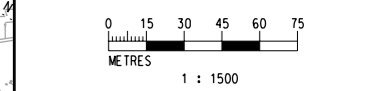
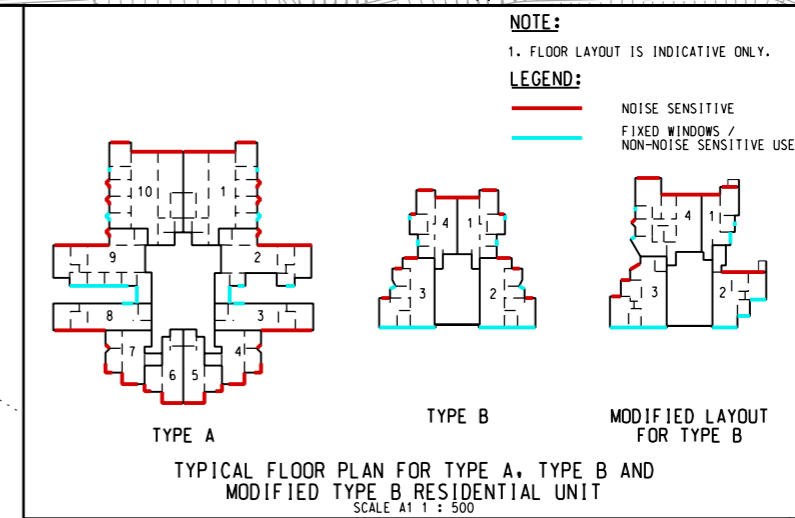
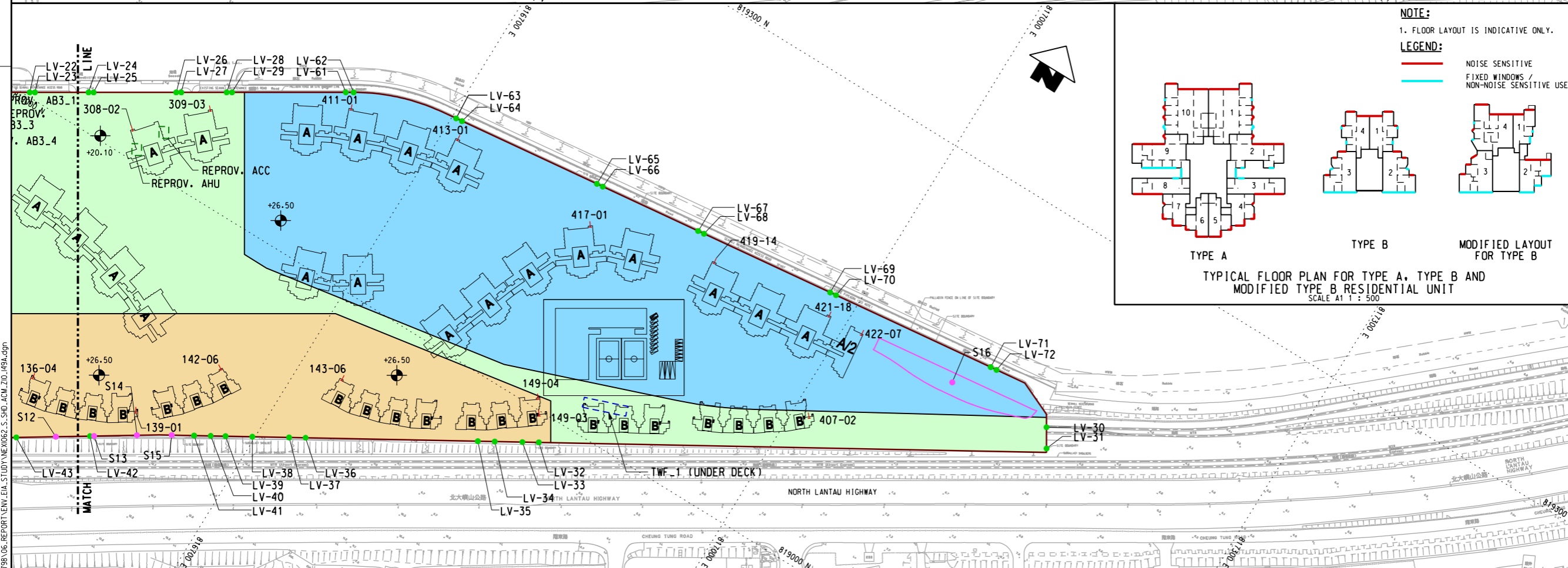


- KEY PLAN**  
(SCALE 1 : 30000)
- LEGEND:**
- EXISTING/REPROVISIONED SHD BOUNDARY
  - PLANNED/REPROVISIONED BUILDING IN SHD (UNDER DECK)
  - EXISTING BUILDING IN SHD (UNDER DECK)
  - BOUNDARY OF ULTIMATE SEWAGE PUMPING STATION FOR SHD TOPSIDE DEVELOPMENT
  - NOISE ASSESSMENT POINT
  - VENTILATION LOUVER (PLANNED)
  - FIXED PLANT NOISE SOURCE UNDER DECK (PLANNED)
  - FIXED PLANT NOISE SOURCE AT SHD TOPSIDE DEVELOPMENT (PLANNED)
  - A RESIDENTIAL TOWER TYPE A
  - B RESIDENTIAL TOWER TYPE B
  - B' RESIDENTIAL TOWER MODIFIED LAYOUT FOR TYPE B
  - STAGE 1 SHD REPLANNING WORKS
  - STAGE 2 SHD REPLANNING WORKS
  - STAGE 3 SHD REPLANNING WORKS
  - STAGE 4 SHD REPLANNING WORKS



P:\Projects\60493798\01\_CAD\_ADMIN\02\_ISSUATION\_PLOT\_DRIVER\3.0\_BK\_COL\_SYSTEM\_STD.PLT  
 PLOT DRW: 2017/07/22 09:56:56  
 MODELNAME: P:\Projects\60493798\01\_CAD\_ADMIN\02\_ISSUATION\_PLOT\_DRIVER\3.0\_BK\_COL\_SYSTEM\_STD.PLT  
 PLENNAME:

REV	DESCRIPTION	BY	DATE	APPROVED	REV	DESCRIPTION	BY	DATE	APPROVED
A	PRELIMINARY DESIGN REPORT ISSUE				SN	10AUG16	HL		

DRAWN ZENG FU XIU  
 DESIGNED ANTHEA FUNG  
 CHECKED SAM NG  
 APPROVED HL  
 DATE 10/AUG/2016  
DO NOT SCALE DRAWINGS. ALL DIMENSIONS SHALL BE VERIFIED ON SITE.  
 © MTR CORPORATION LIMITED 2008. ALL RIGHTS RESERVED.  
 REPRODUCTION OF THIS DRAWING OR DOCUMENT IS STRICTLY PROHIBITED WITHOUT THE WRITTEN CONSENT OF THE MTR CORPORATION LIMITED.

**MTR**

**SIU HO WAN DEPOT**

**AECOM** in association with **Aedas**

ORIGINATOR  
CADD REF. NEX1062.S.SH.D.ACM.Z10.149A.dgn

**TITLE**  
SIU HO WAN STATION AND SIU HO WAN DEPOT  
REPLANNING WORKS  
LOCATIONS OF FIXED PLANT NOISE SOURCES,  
VENTILATION LOUVERS AND REPRESENTATIVE  
NOISE ASSESSMENT POINTS - ASSESSMENT SCENARIO 4

SCALE 1 : 1500 @ A1  
DRAWING NO. NEX1062/S/SHD/ACM/Z10/149  
REV. A