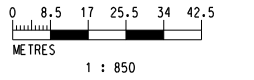


**KEY PLAN**  
(SCALE 1 : 30000)

**NOTE:**  
1. THIS DRAWING TO BE READ IN CONJUNCTION WITH DRAWING NOS. NEX1062/S/SHD/ACM/Z10/156 TO 158.

- LEGEND:**
- EXISTING/REPROVISIONED SHD BOUNDARY
  - MODIFIED TCL/AEL ALIGNMENT
  - PROPOSED SHD (INDICATIVE)
  - ASSOCIATED TRACKWORKS AREA
  - STAGE 1 SHD REPLANNING WORKS
  - STAGE 2 SHD REPLANNING WORKS
  - STAGE 3 SHD REPLANNING WORKS
  - + NOISE ASSESSMENT POINT (MAINLINE)
  - + NOISE ASSESSMENT POINT (MAINLINE & DEPOT)
  - A RESIDENTIAL TOWER TYPE A
  - B RESIDENTIAL TOWER TYPE B
  - B RESIDENTIAL TOWER MODIFIED LAYOUT FOR TYPE B



P:\Projects\60493798\01.CAD\_ADMIN\02\_UTILIZATION\_PLOT\_DRIVER\3.BW.COL\_SYSTEM.STD.PLT  
 PLOT DRW: P:\Projects\60493798\01.CAD\_ADMIN\02\_UTILIZATION\_PLOT\_DRIVER\3.BW.COL\_SYSTEM.STD.PLT  
 MODELNAME: P:\Projects\60493798\01.CAD\_ADMIN\02\_UTILIZATION\_PLOT\_DRIVER\3.BW.COL\_SYSTEM.STD.PLT  
 PLENNAME: P:\Projects\60493798\01.CAD\_ADMIN\02\_UTILIZATION\_PLOT\_DRIVER\3.BW.COL\_SYSTEM.STD.PLT

REV	DESCRIPTION	BY	DATE	APPROVED	REV	DESCRIPTION	BY	DATE	APPROVED
A	FIRST ISSUE				SN	08FEB17	HL		

DRAWN	ZENG FU XIU
DESIGNED	ANTHEA FUNG
CHECKED	SAM NG
APPROVED	HL
DATE	08/FEB/2017

**MTR**

**SIU HO WAN DEPOT**

**AECOM** in association with **Aedas**

CADD REF. NEX1062.S\_SHD\_ACM.Z10.156A.dgn

<b>TITLE</b>		<b>SIU HO WAN STATION AND SIU HO WAN DEPOT</b>	
		<b>REPLANNING WORKS</b>	
		<b>LOCATIONS OF REPRESENTATIVE NOISE ASSESSMENT POINTS</b>	
		<b>(RAILWAY NOISE) - ASSESSMENT SCENARIO 3</b>	
		<b>(SHEET 1 OF 3)</b>	
SCALE	1 : 850 (A1)	DRAWING NO.	NEX1062/S/SHD/ACM/Z10/156
REV.			A