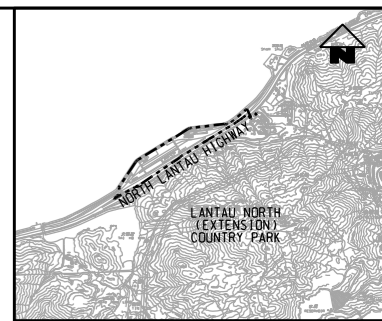
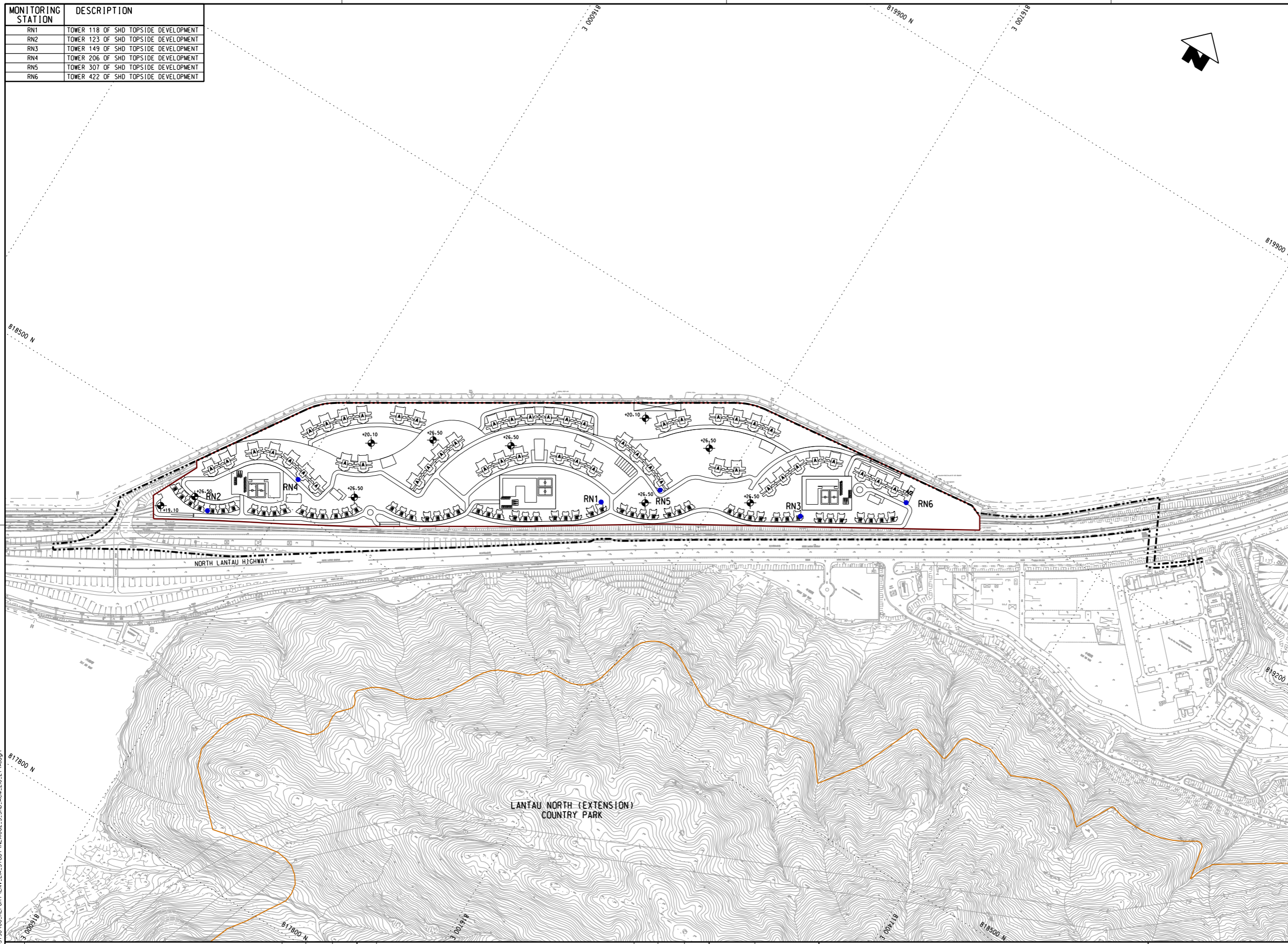


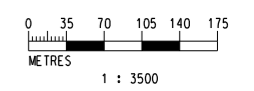
MONITORING STATION	DESCRIPTION
RN1	TOWER 118 OF SHD TOPSIDE DEVELOPMENT
RN2	TOWER 123 OF SHD TOPSIDE DEVELOPMENT
RN3	TOWER 149 OF SHD TOPSIDE DEVELOPMENT
RN4	TOWER 206 OF SHD TOPSIDE DEVELOPMENT
RN5	TOWER 307 OF SHD TOPSIDE DEVELOPMENT
RN6	TOWER 422 OF SHD TOPSIDE DEVELOPMENT



KEY PLAN
(SCALE 1 : 50000)

LEGEND:

- EXISTING/REPROVISIONED SHD BOUNDARY
- SCHEME BOUNDARY
- LANTAU NORTH (EXTENSION) COUNTRY PARK
- RESIDENTIAL TOWER TYPE A
- RESIDENTIAL TOWER TYPE B
- RESIDENTIAL TOWER MODIFIED LAYOUT FOR TYPE B
- PROPOSED NOISE MONITORING STATION (RAILWAY NOISE)



PLOT DRW: D:\PROJECTS\60493798\01_CAD_ADMIN\02_UTILIZATION_PLOT_DRAWING\3.DWG COL. SYSTEM_S10.PLT
 MODELNAME: 2017/4/5
 FILENAME: P:\PROJECTS\60493798\06_REPORT\ENV\ENV\STUDY\NEX1062_S_SHD_ACM_Z10_274A.dgn

REV	DESCRIPTION	BY	DATE	APPROVED
A	PRELIMINARY DESIGN REPORT ISSUE	SN	14FEB17	HL

DRAWN	ZENG FU XIU
DESIGNED	ANTHEA FUNG
CHECKED	SAM NG
APPROVED	HL
DATE	14/FEB/2017

MTR

SIU HO WAN DEPOT

AECOM in association with **Aedas**

CADD REF. NEX1062_S_SHD_ACM_Z10_274A.dgn

TITLE		SIU HO WAN STATION AND SIU HO WAN DEPOT REPLANNING WORKS	
		LOCATION OF PROPOSED RAILWAY NOISE MONITORING STATIONS	
SCALE	DRAWING NO.	REV.	
1 : 3500 @ A1	NEX1062/S/SHD/ACM/Z10/274	A	