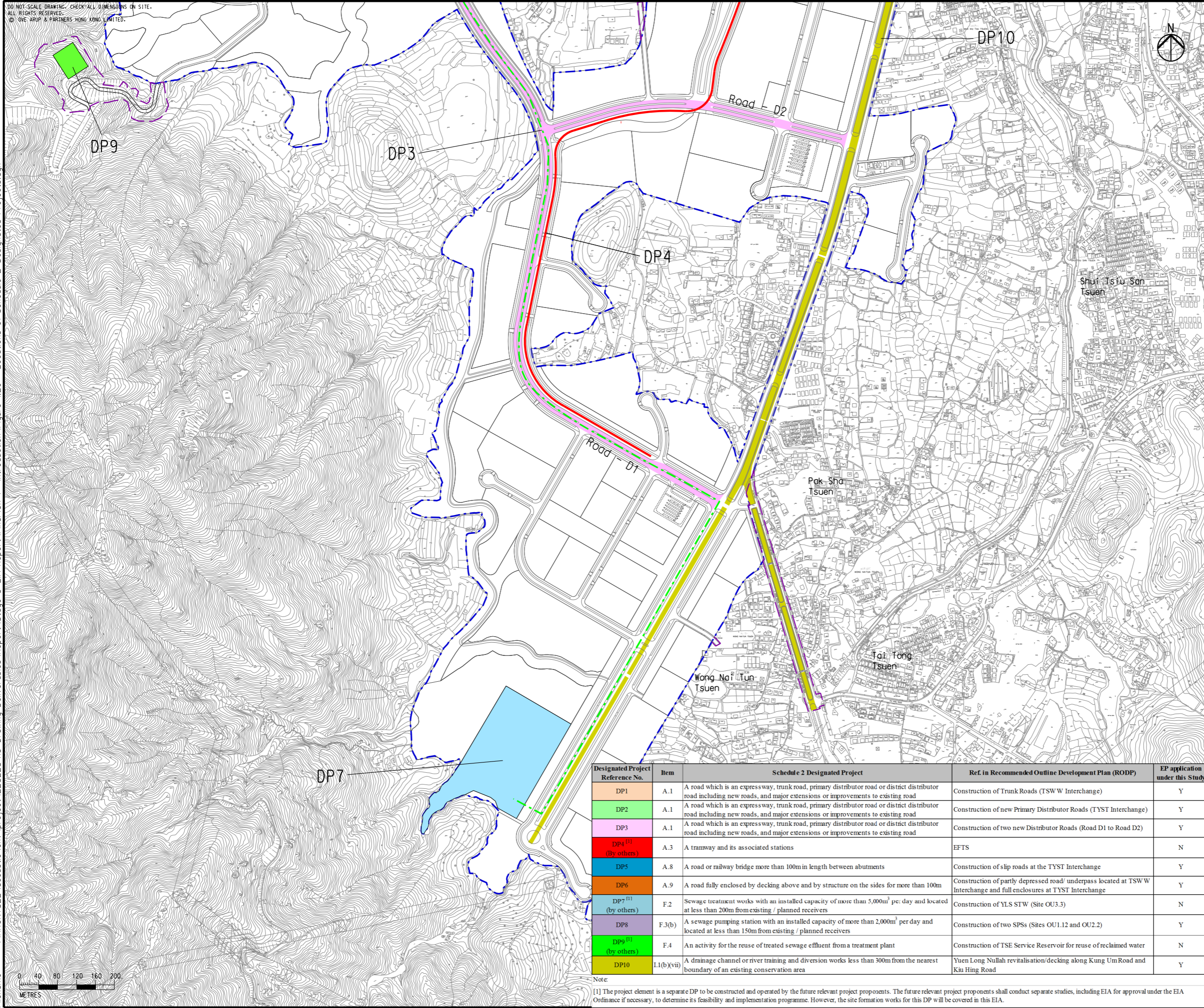


DO NOT SCALE DRAWING. CHECK ALL DIMENSIONS ON SITE.
ALL RIGHTS RESERVED.
© 2017 ARUP & PARTNERS HONG KONG LIMITED.

Printed by : 7/23/2017
Filename : \\HKGN\TS22\acoustic\env\project\228228\13 Drawing Deliverables\Report\Stage 3 EIA Report\Final\Ch 1 - Introduction\Figure 1.2c - Locations of Schedule 2 Designated Projects.dgn



Legend

- Potential Development Area (PDA)
- Works Boundary Outside PDA
- New Sewer from YLS STW to the Existing Inlet Chamber of the NWNT Effluent Tunnel at San Wai for Discharging to the Urmston Road Submarine Outfall

Rev	Description	By	Date
C	THIRD ISSUE	GL	07/17
B	SECOND ISSUE	GL	05/17
A	FIRST ISSUE	GL	02/17

Consultant

ARUP

Contract No. and Title

Agreement No. CE 35/2012(CE)

Planning and Engineering Study for Housing Sites in Yuen Long South - Investigation

Drawing title

Locations of Schedule 2 Designated Projects (Sheet 4 of 5)

Drawing no. Figure 1.2c		Rev. C	
Drawn GL	Date 07/17	Checked FC	Approved FC
Scale AS SHOWN		Status PRELIMINARY	

COPYRIGHT RESERVED



土木工程拓展署
Civil Engineering and
Development Department



規劃署
Planning
Department

Designated Project Reference No.	Item	Schedule 2 Designated Project	Ref. in Recommended Outline Development Plan (RODP)	EP application under this Study
DP1	A.1	A road which is an expressway, trunk road, primary distributor road or district distributor road including new roads, and major extensions or improvements to existing road	Construction of Trunk Roads (TSWW Interchange)	Y
DP2	A.1	A road which is an expressway, trunk road, primary distributor road or district distributor road including new roads, and major extensions or improvements to existing road	Construction of new Primary Distributor Roads (TYST Interchange)	Y
DP3	A.1	A road which is an expressway, trunk road, primary distributor road or district distributor road including new roads, and major extensions or improvements to existing road	Construction of two new Distributor Roads (Road D1 to Road D2)	Y
DP4 ^[1] (By others)	A.3	A tramway and its associated stations	EFTS	N
DP5	A.8	A road or railway bridge more than 100m in length between abutments	Construction of slip roads at the TYST Interchange	Y
DP6	A.9	A road fully enclosed by decking above and by structure on the sides for more than 100m	Construction of partly depressed road/ underpass located at TSWW Interchange and full enclosures at TYST Interchange	Y
DP7 ^[1] (by others)	F.2	Sewage treatment works with an installed capacity of more than 5,000m ³ per day and located at less than 200m from existing / planned receivers	Construction of YLS STW (Site OU3.3)	N
DP8	F.3(b)	A sewage pumping station with an installed capacity of more than 2,000m ³ per day and located at less than 150m from existing / planned receivers	Construction of two SPSS (Sites OU1.12 and OU2.2)	Y
DP9 ^[1] (by others)	F.4	An activity for the reuse of treated sewage effluent from a treatment plant	Construction of TSE Service Reservoir for reuse of reclaimed water	N
DP10	L1(b)(vii)	A drainage channel or river training and diversion works less than 300m from the nearest boundary of an existing conservation area	Yuen Long Nullah revitalisation/decking along Kung Um Road and Kiu Hing Road	Y

Note:
[1] The project element is a separate DP to be constructed and operated by the future relevant project proponents. The future relevant project proponents shall conduct separate studies, including EIA for approval under the EIA Ordinance if necessary, to determine its feasibility and implementation programme. However, the site formation works for this DP will be covered in this EIA.