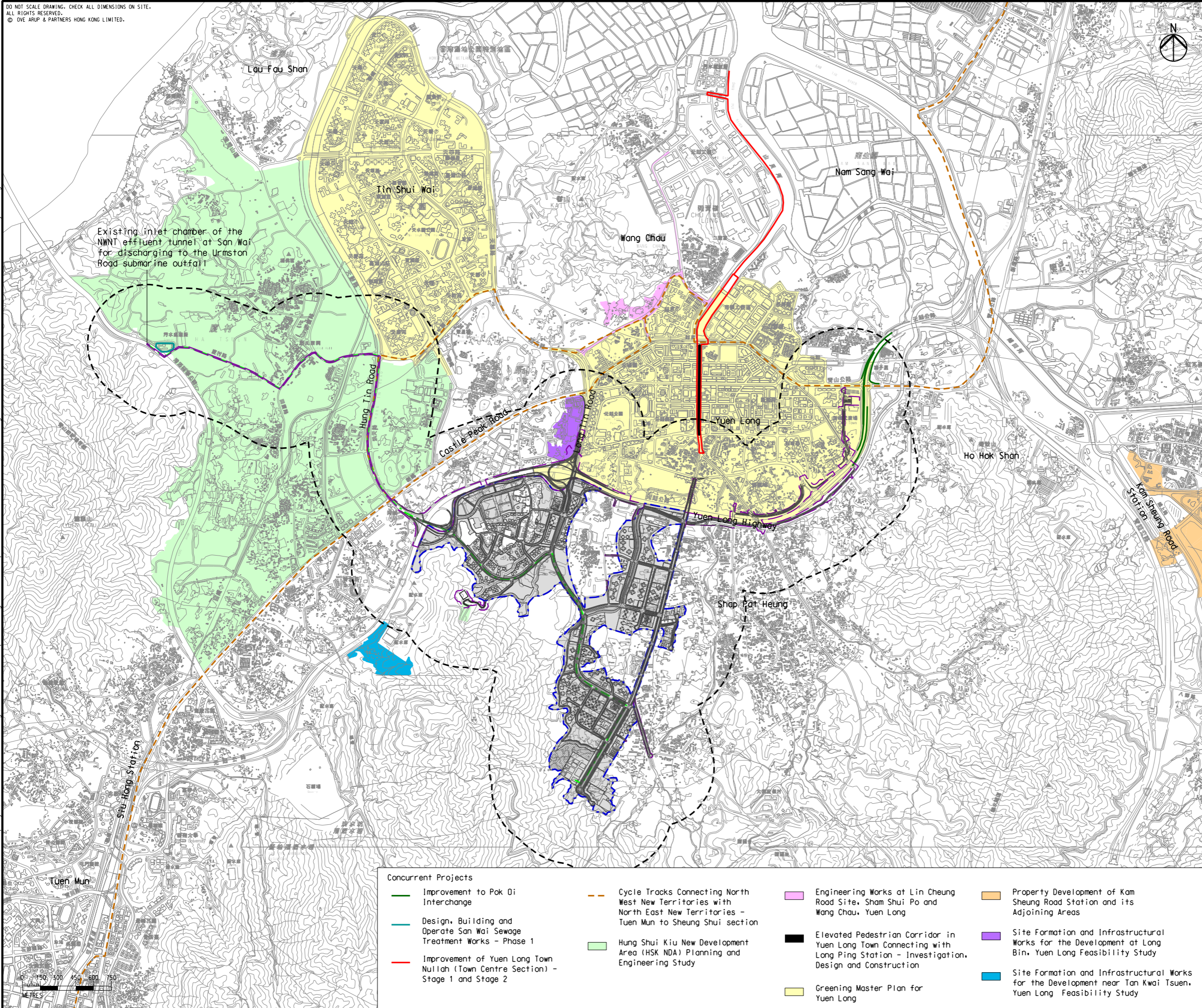


DO NOT SCALE DRAWING. CHECK ALL DIMENSIONS ON SITE.
ALL RIGHTS RESERVED.
© OVE ARUP & PARTNERS HONG KONG LIMITED.

Printed by : 7/23/2017
Filename : \\HKGNIS22\acoustic\env\project\228228\13 Drawing Deliverables\Report\Stage 3 EIA Report\Final\Ch 1 - Introduction\Figure 1.3 - Locations of Potential Concurrent Projects.dgn



- Legend**
- Potential Development Area (PDA)
 - Works Boundary Outside PDA
 - New Sewer from YLS STW to the Existing Inlet Chamber of the NWNT Effluent Tunnel at San Wai for Discharging to the Urmston Road Submarine Outfall
 - 500m Assessment Area

Rev	Description	By	Date
C	THIRD ISSUE	GL	07/17
B	SECOND ISSUE	GL	05/17
A	FIRST ISSUE	GL	02/17

Consultant
ARUP

Contract No. and Title
Agreement No. CE 35/2012(CE)
Planning and Engineering Study for Housing Sites in Yuen Long South - Investigation

Drawing title
Locations of Potential Concurrent Projects

Drawing no. Figure 1.3		Rev. C	
Drawn GL	Date 07/17	Checked FC	Approved FC
Scale 1:30000 @A3		Status PRELIMINARY	

COPYRIGHT RESERVED



土木工程拓展署
Civil Engineering and
Development Department



規劃署
Planning
Department

- Concurrent Projects**
- Improvement to Pok Oi Interchange
 - Design, Building and Operate San Wai Sewage Treatment Works - Phase 1
 - Improvement of Yuen Long Town Nullah (Town Centre Section) - Stage 1 and Stage 2
 - Cycle Tracks Connecting North West New Territories with North East New Territories - Tuen Mun to Sheung Shui section
 - Hung Shui Kiu New Development Area (HSK NDA) Planning and Engineering Study
 - Greening Master Plan for Yuen Long
 - Engineering Works at Lin Cheung Road Site, Sham Shui Po and Wang Chau, Yuen Long
 - Elevated Pedestrian Corridor in Yuen Long Town Connecting with Long Ping Station - Investigation, Design and Construction
 - Property Development of Kam Sheung Road Station and its Adjoining Areas
 - Site Formation and Infrastructural Works for the Development at Long Bin, Yuen Long Feasibility Study
 - Site Formation and Infrastructural Works for the Development near Tan Kwai Tsuen, Yuen Long Feasibility Study