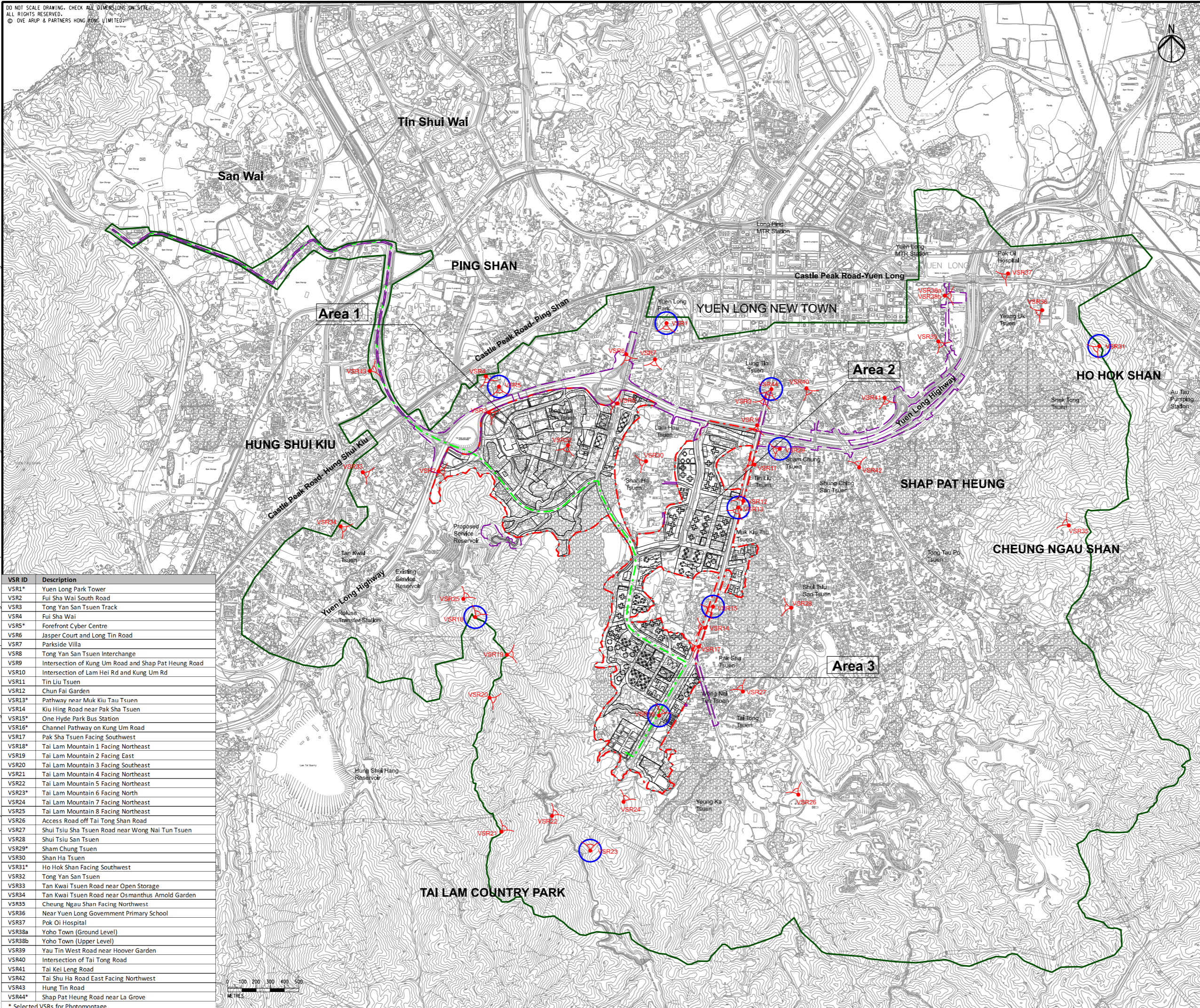


DO NOT SCALE DRAWING. CHECK ALL DIMENSIONS ON SITE.
ALL RIGHTS RESERVED.
© OVE ARUP & PARTNERS HONG KONG LIMITED

Printed by : 7/23/2017
Filename : \\HKGN\TS22\accoustic\env\project\228228\13 Drawing Deliverables\Report\Stage 3 EIA Report\Final\Ch 10 LVIA\Figure 10.10 - Visual Sensitive Receiver Plan.dgn



- Legend**
- Potential Development Area (PDA)
 - Visual Envelope
 - Works Boundary Outside PDA
 - New Sewer from YLS STW to the Existing Inlet Chamber of the NWNT Effluent Tunnel at San Wai for Discharging to the Urmston Road Submarine Outfall
 - ▲ VSR Location
 - VSR for Photomontage

VSR ID	Description
VSR1*	Yuen Long Park Tower
VSR2	Fui Sha Wai South Road
VSR3	Tong Yan San Tsuen Track
VSR4	Fui Sha Wai
VSR5*	Forefront Cyber Centre
VSR6	Jasper Court and Long Tin Road
VSR7	Parkside Villa
VSR8	Tong Yan San Tsuen Interchange
VSR9	Intersection of Kung Um Road and Shap Pat Heung Road
VSR10	Intersection of Lam Hei Rd and Kung Um Rd
VSR11	Tin Liu Tsuen
VSR12	Chun Fai Garden
VSR13*	Pathway near Muk Kiu Tau Tsuen
VSR14	Kiu Hing Road near Pak Sha Tsuen
VSR15*	One Hyde Park Bus Station
VSR16*	Channel Pathway on Kung Um Road
VSR17	Pak Sha Tsuen Facing Southwest
VSR18*	Tai Lam Mountain 1 Facing Northeast
VSR19	Tai Lam Mountain 2 Facing East
VSR20	Tai Lam Mountain 3 Facing Southeast
VSR21	Tai Lam Mountain 4 Facing Northeast
VSR22	Tai Lam Mountain 5 Facing Northeast
VSR23*	Tai Lam Mountain 6 Facing North
VSR24	Tai Lam Mountain 7 Facing Northeast
VSR25	Tai Lam Mountain 8 Facing Northeast
VSR26	Access Road off Tai Tong Shan Road
VSR27	Shui Tsiu Sha Tsuen Road near Wong Nai Tun Tsuen
VSR28	Shui Tsiu San Tsuen
VSR29*	Sham Chung Tsuen
VSR30	Shan Ha Tsuen
VSR31*	Ho Hok Shan Facing Southwest
VSR32	Tong Yan San Tsuen
VSR33	Tan Kwai Tsuen Road near Open Storage
VSR34	Tan Kwai Tsuen Road near Osmanthus Arnold Garden
VSR35	Cheung Ngau Shan Facing Northwest
VSR36	Near Yuen Long Government Primary School
VSR37	Pok Oi Hospital
VSR38a	Yoho Town (Ground Level)
VSR38b	Yoho Town (Upper Level)
VSR39	Yau Tin West Road near Hoover Garden
VSR40	Intersection of Tai Tong Road
VSR41	Tai Kei Leng Road
VSR42	Tai Shu Ha Road East Facing Northwest
VSR43	Hung Tin Road
VSR44*	Shap Pat Heung Road near La Grove

* Selected VSRs for Photomontage



D	FOURTH ISSUE	GL	07/17
C	THIRD ISSUE	GL	05/17
B	SECOND ISSUE	GL	01/17
A	FIRST ISSUE	GL	12/16
Rev	Description	By	Date

Consultant
ARUP

Contract No. and Title
Agreement No. CE 35/2012(CE)
Planning and Engineering Study for Housing Sites in Yuen Long South - Investigation

Drawing title
Visual Sensitive Receiver Plan

Drawing no. Figure 10.10		Rev. D	
Drawn GL	Date 07/17	Checked CY	Approved FC
Scale 1:25000 ON A3	Status PRELIMINARY	COPYRIGHT RESERVED	



土木工程拓展署
Civil Engineering and
Development Department



規劃署
Planning
Department