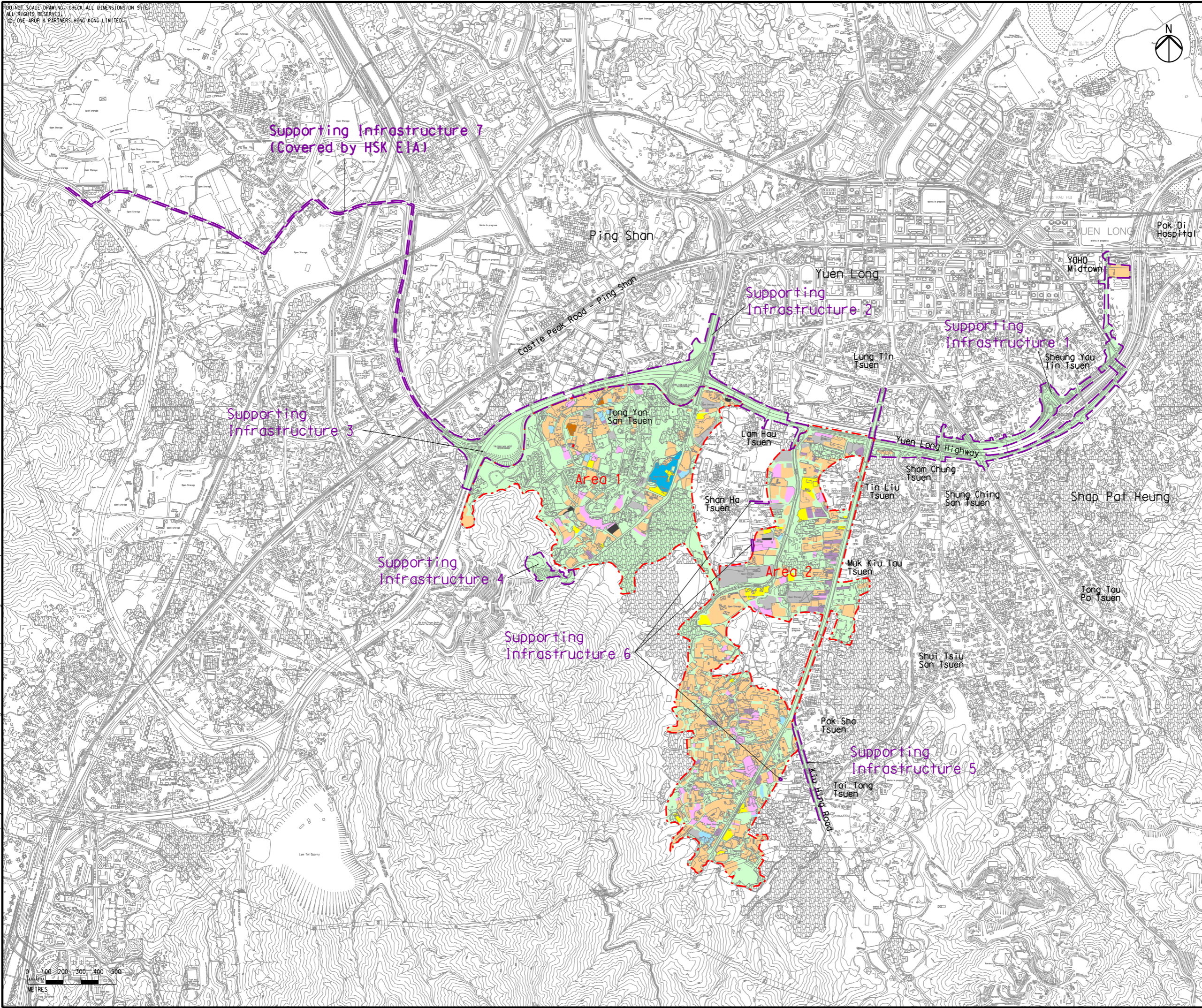


DO NOT SCALE DRAWING. CHECK ALL DIMENSIONS ON SITE.
ALL RIGHTS RESERVED.
© 2017 ARUP & PARTNERS HONG KONG LIMITED.

Printed by : 7/18/2017
Filename : \\HKGNTS22\acoustic\env\project\228228\13 Drawing Deliverables\Report\Stage 3 EIA Report\Final\Ch 12 Land Contamination Figure 12.2 - Existing Land Use (Overall).dgn



Legend

- Land Contamination Assessment Area (Within PDA)
- Land Contamination Assessment Area (Supporting Infrastructure)
- Non-industrial Uses, include:
 - Residential premises (i.e. some under construction)
 - Green field
 - Agricultural land
 - Temple
 - Vacant land
 - Abandoned structure
- Industrial Uses, include:**
 - Open Storage
 - Warehouse
 - Vehicle Maintenance
 - Metal Works
 - Waste Recycling
 - Construction Storage
 - Open Car Park
 - Concrete Batching Plant
 - Chemical Store
 - Container Yard

E	FIFTH ISSUE	GL	07/17
D	FOURTH ISSUE	GL	05/17
C	THIRD ISSUE	GL	12/15
B	SECOND ISSUE	GL	12/14
Rev	Description	By	Date

Consultant

ARUP

Contract No. and Title

Agreement No. CE 35/2012(CE)

Planning and Engineering Study for Housing Sites in Yuen Long South - Investigation

Drawing title

Existing Land Use (Overall)

Drawing no.		Rev.	
Figure 12.2		E	
Drawn	Date	Checked	Approved
GL	07/17	FC	FC
Scale	1:20000 ON A3	Status	PRELIMINARY

COPYRIGHT RESERVED



土木工程拓展署
Civil Engineering and
Development Department



規劃署
Planning
Department