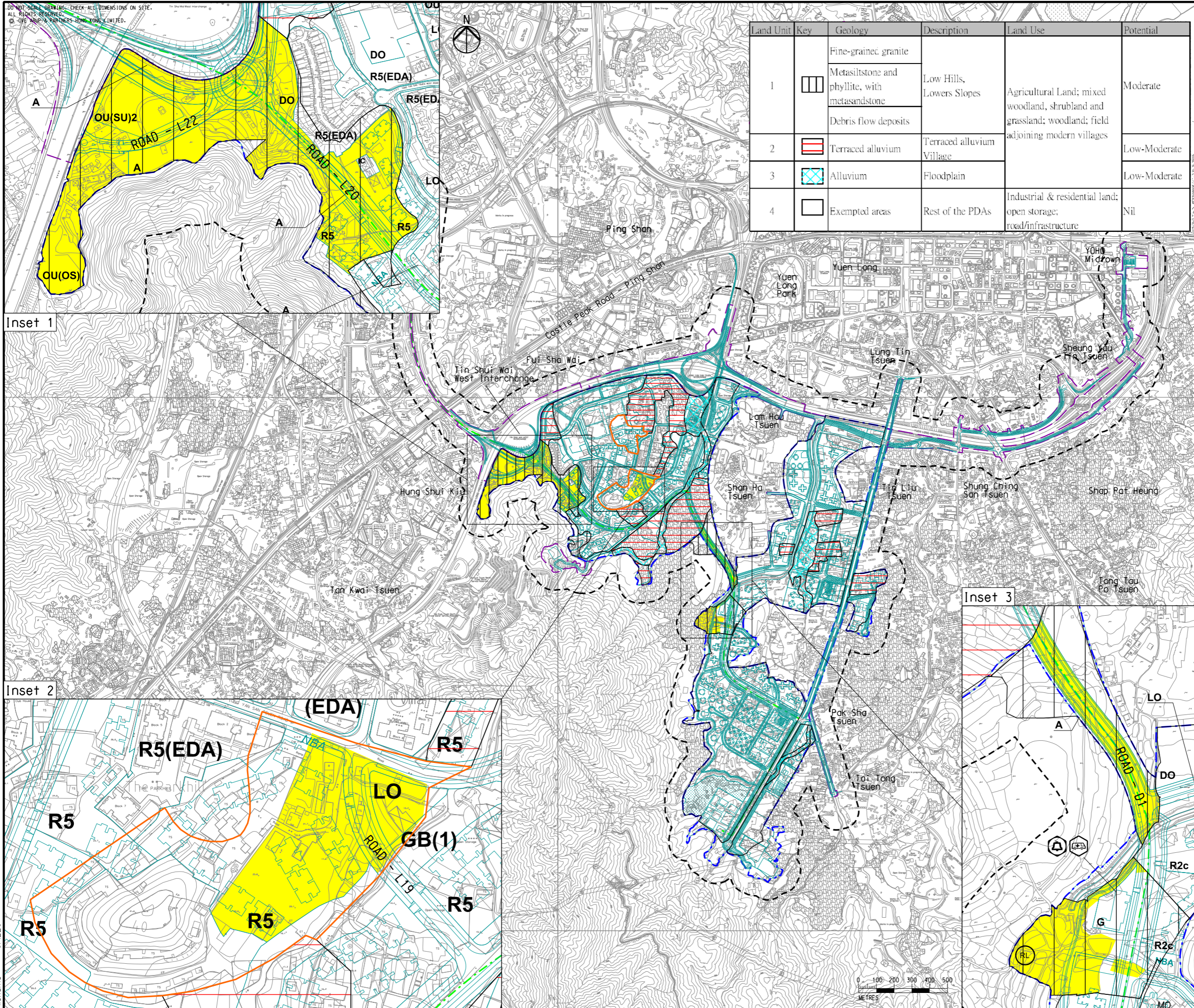


DO NOT SCALE DRAWING. CHECK ALL DIMENSIONS ON SITE.
ALL RIGHTS RESERVED.
© OFE ARUP & PARTNERS HONG KONG LIMITED.



Land Unit	Key	Geology	Description	Land Use	Potential
1		Fine-grained granite Metasiltstone and phyllite, with metasandstone Debris flow deposits	Low Hills, Lowers Slopes	Agricultural Land; mixed woodland, shrubland and grassland; woodland; field adjoining modern villages	Moderate
2		Terraced alluvium	Terraced alluvium Village		Low-Moderate
3		Alluvium	Floodplain		Low-Moderate
4		Exempted areas	Rest of the PDAs	Industrial & residential land; open storage; road/infrastructure	Nil

- Legend**
- Potential Development Area (PDA)
 - Works Boundary Outside PDA
 - New Sewer from YLS STW to the Existing Inlet Chamber of the NWNT Effluent Tunnel at San Wai for Discharging to the Urmston Road Submarine Outfall
 - 100m Assessment Area
 - Surveyed Area
 - Archaeological Survey

Inset 1

Inset 2

Inset 3

A	FIRST ISSUE	GL	07/17
Rev	Description	By	Date
Consultant			
ARUP			
Contract No. and Title			
Agreement No. CE 35/2012(CE)			
Planning and Engineering Study for Housing Sites in Yuen Long South - Investigation			
Drawing title			
Location of Further Archaeological Survey			
Drawing no.		Rev.	
Figure 13.10		A	
Drawn	Date	Checked	Approved
GL	07/17	FC	FC
Scale	1:20000 ON A3	Status	PRELIMINARY
COPYRIGHT RESERVED			
土木工程拓展署 Civil Engineering and Development Department		規劃署 Planning Department	

Printed by : \$DATES
Filename : \$FILES