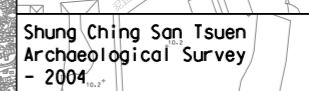
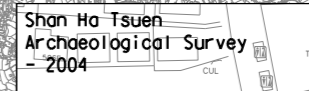
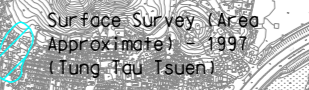
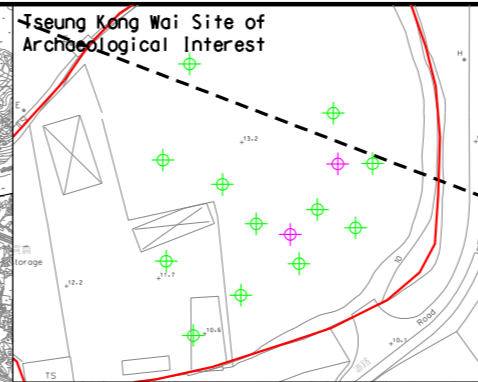
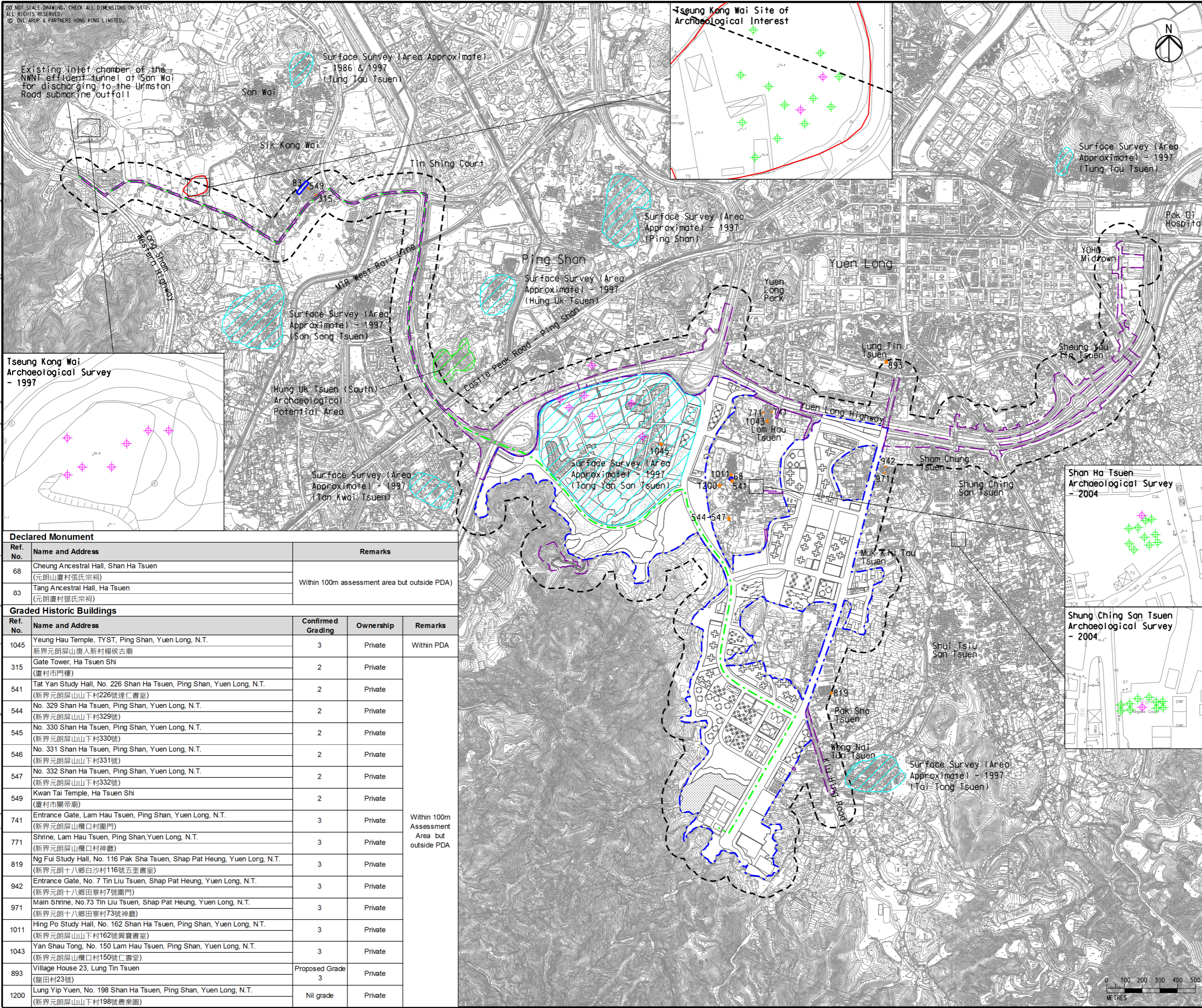
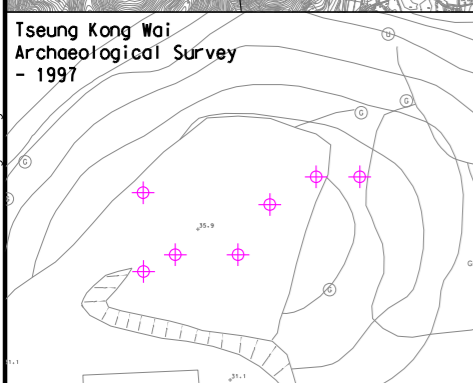


DO NOT SCALE DRAWING. CHECK ALL DIMENSIONS ON SITE.
ALL RIGHTS RESERVED.
© ONE ARUP & PARTNERS HONG KONG LIMITED.

Printed by : 7/26/2017
Filename : \\HKGNTS22\project\228228\13 Cultural Heritage\Final\Ch 13 Cultural Heritage\Figure 13.4 Areas of Archaeology and Built Heritage.dgn



- Legend**
- Potential Development Area (PDA)
 - Works Boundary Outside PDA
 - New Sewer from YLS STW to the Existing Inlet Chamber of the NWN Effluent Tunnel at San Wai for Discharging to the Urmston Road Submarine Outfall
 - 100m Assessment Area
 - Site of Archaeological Interest
 - Graded Historic Building
 - Declared Monument
 - Location of Previous Surface Surveys (Survey locations were extrapolated/ approximated from various sources (territory-wide surveys))
 - Archaeological Potential Area
 - + Previous Test Pit
 - + Previous Auger Hole



Ref. No.	Name and Address	Confirmed Grading	Ownership	Remarks
Declared Monument				
68	Cheung Ancestral Hall, Shan Ha Tsuen (元朗山廈村張氏宗祠)			Within 100m assessment area but outside PDA)
83	Tang Ancestral Hall, Ha Tsuen (元朗慶村鄧氏宗祠)			
Graded Historic Buildings				
1045	Yeung Hau Temple, TYST, Ping Shan, Yuen Long, N.T. 新界元朗屏山唐人新村楊侯古廟	3	Private	Within PDA
315	Gate Tower, Ha Tsuen Shi (廈村市門樓)	2	Private	
541	Tai Yan Study Hall, No. 226 Shan Ha Tsuen, Ping Shan, Yuen Long, N.T. (新界元朗屏山山下村226號達仁書室)	2	Private	
544	No. 329 Shan Ha Tsuen, Ping Shan, Yuen Long, N.T. (新界元朗屏山山下村329號)	2	Private	
545	No. 330 Shan Ha Tsuen, Ping Shan, Yuen Long, N.T. (新界元朗屏山山下村330號)	2	Private	
546	No. 331 Shan Ha Tsuen, Ping Shan, Yuen Long, N.T. (新界元朗屏山山下村331號)	2	Private	
547	No. 332 Shan Ha Tsuen, Ping Shan, Yuen Long, N.T. (新界元朗屏山山下村332號)	2	Private	
549	Kwan Tai Temple, Ha Tsuen Shi (廈村市關帝廟)	2	Private	
741	Entrance Gate, Lam Hau Tsuen, Ping Shan, Yuen Long, N.T. (新界元朗屏山樓口村圍門)	3	Private	Within 100m Assessment Area but outside PDA
771	Shrine, Lam Hau Tsuen, Ping Shan, Yuen Long, N.T. (新界元朗屏山樓口村神廳)	3	Private	
819	Ng Fui Study Hall, No. 116 Pak Sha Tsuen, Shap Pat Heung, Yuen Long, N.T. (新界元朗十八鄉白沙村116號五奎書室)	3	Private	
942	Entrance Gate, No. 7 Tin Liu Tsuen, Shap Pat Heung, Yuen Long, N.T. (新界元朗十八鄉田寮村7號圍門)	3	Private	
971	Main Shrine, No. 73 Tin Liu Tsuen, Shap Pat Heung, Yuen Long, N.T. (新界元朗十八鄉田寮村73號神廳)	3	Private	
1011	Hing Po Study Hall, No. 162 Shan Ha Tsuen, Ping Shan, Yuen Long, N.T. (新界元朗屏山山下村162號興寶書室)	3	Private	
1043	Yan Shau Tong, No. 150 Lam Hau Tsuen, Ping Shan, Yuen Long, N.T. (新界元朗屏山樓口村150號仁壽堂)	3	Private	
893	Village House 23, Lung Tin Tsuen (龍田村23號)	Proposed Grade 3	Private	
1200	Lung Yip Yuen, No. 198 Shan Ha Tsuen, Ping Shan, Yuen Long, N.T. (新界元朗屏山山下村198號農業園)	Nil grade	Private	


Rev	Description	By	Date
C	THIRD ISSUE	GL	07/17
B	SECOND ISSUE	GL	05/17
A	FIRST ISSUE	GL	12/16

Consultant
ARUP


Contract No. and Title
Agreement No. CE 35/2012(CE)
Planning and Engineering Study for Housing Sites in Yuen Long South - Investigation

Drawing title
Areas of Archaeology and Built Heritage

Drawing no. Figure 13.4		Rev. C	
Drawn GL	Date 07/17	Checked FC	Approved FC
Scale 1:20000 ON A3	Status PRELIMINARY	COPYRIGHT RESERVED	



土木工程拓展署
Civil Engineering and
Development Department



規劃署
Planning
Department

