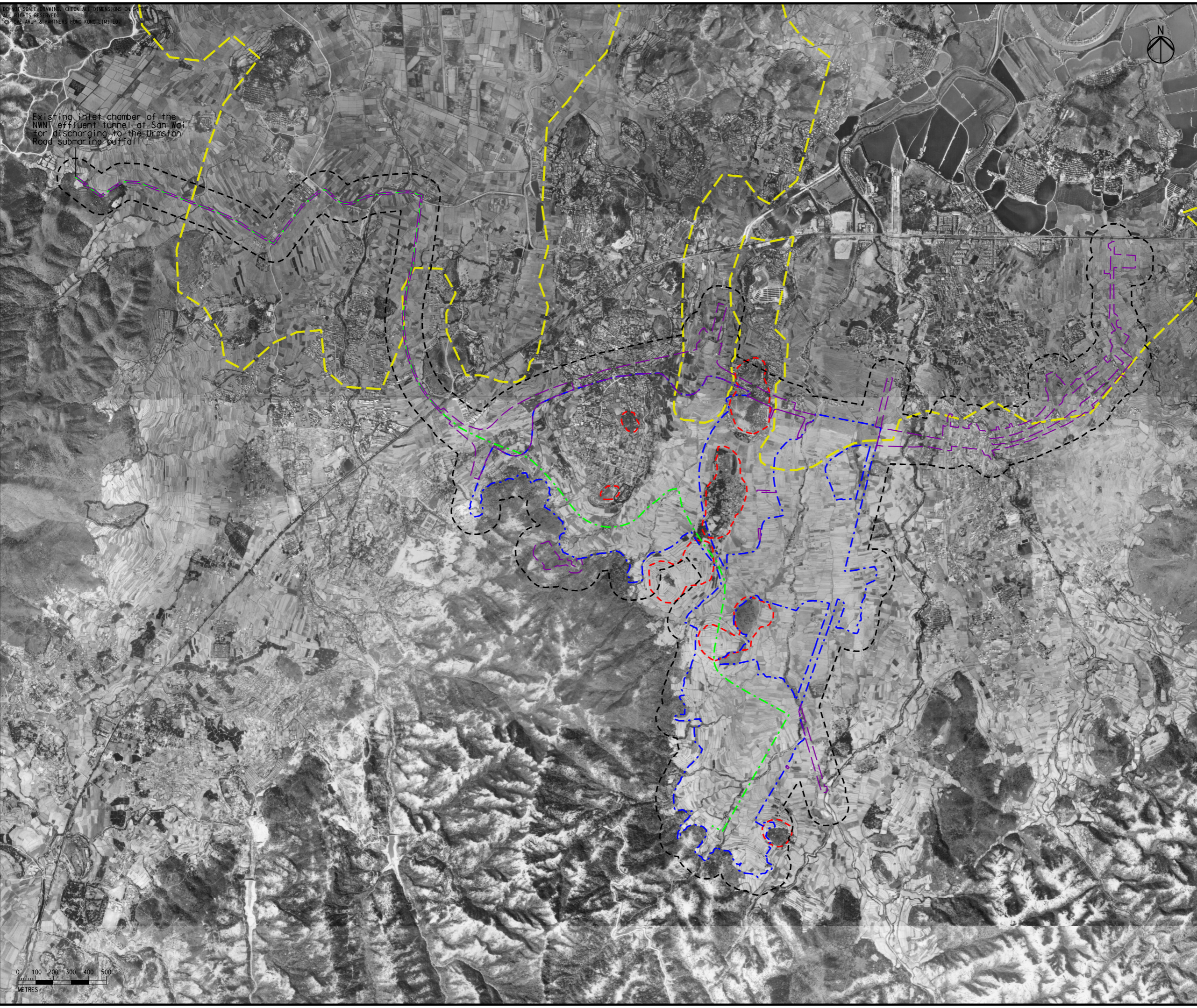


Printed by : 7/23/2017
 Filename : \\HKGNTS22\acoustic\env\project\228228\13 Drawing Deliverables\Report\Stage 3 EIA Report\Final\Ch 13 Cultural Heritage\Figure 13.6 1963 Aerial Photography showing Landforms of Archaeological Potential.dgn



Existing inlet chamber of the NWN effluent tunnel at San Wai for discharging to the Urmston Road submarine outfall

- Legend**
- Potential Development Area (PDA)
 - Works Boundary Outside PDA
 - New Sewer from YLS STW to the Existing Inlet Chamber of the NWN Effluent Tunnel at San Wai for Discharging to the Urmston Road Submarine Outfall
 - 100m Assessment Area
 - 6000 Years BP Coastline
 - Areas of Small Hillocks and Hillcrests within Alluvial Landscape (former coastline and marshland setting)

Rev	Description	By	Date
C	THIRD ISSUE	GL	07/17
B	SECOND ISSUE	GL	05/17
A	FIRST ISSUE	GL	12/16


Consultant
ARUP

Contract No. and Title
 Agreement No. CE 35/2012(CE)
 Planning and Engineering Study for Housing Sites in Yuen Long South - Investigation


Drawing title
 1963 Aerial Photography Showing Landforms of Archaeological Potential

Drawing no. Figure 13.6		Rev. C	
Drawn GL	Date 07/17	Checked FC	Approved FC
Scale 1:20000 ON A3		Status PRELIMINARY	

COPYRIGHT RESERVED



土木工程拓展署
Civil Engineering and Development Department



規劃署
Planning Department

