

DO NOT SCALE DRAWING. CHECK ALL DIMENSIONS ON SITE.
ALL RIGHTS RESERVED.
© 2017 ARUP & PARTNERS HONG KONG LIMITED.

Existing inlet chamber of the
NWNT effluent tunnel at San Wai
for discharging to the Urmston
Road submarine outfall



- Legend
- Potential Development Area (PDA)
 - Works Boundary Outside PDA
 - New Sewer from YLS STW to the Existing Inlet Chamber of the NWNT Effluent Tunnel at San Wai for Discharging to the Urmston Road Submarine Outfall
 - 100m Assessment Area
 - Grave

Printed by : 7/23/2017
Filename : \\HKGN1522\acoustic\env\project\228228\13 Drawing Deliverables\Report\Stage 3 EIA Report\Final\Ch 13 Cultural Heritage\Figure 13.8 Grave Location Map with Proposed Layout.dgn

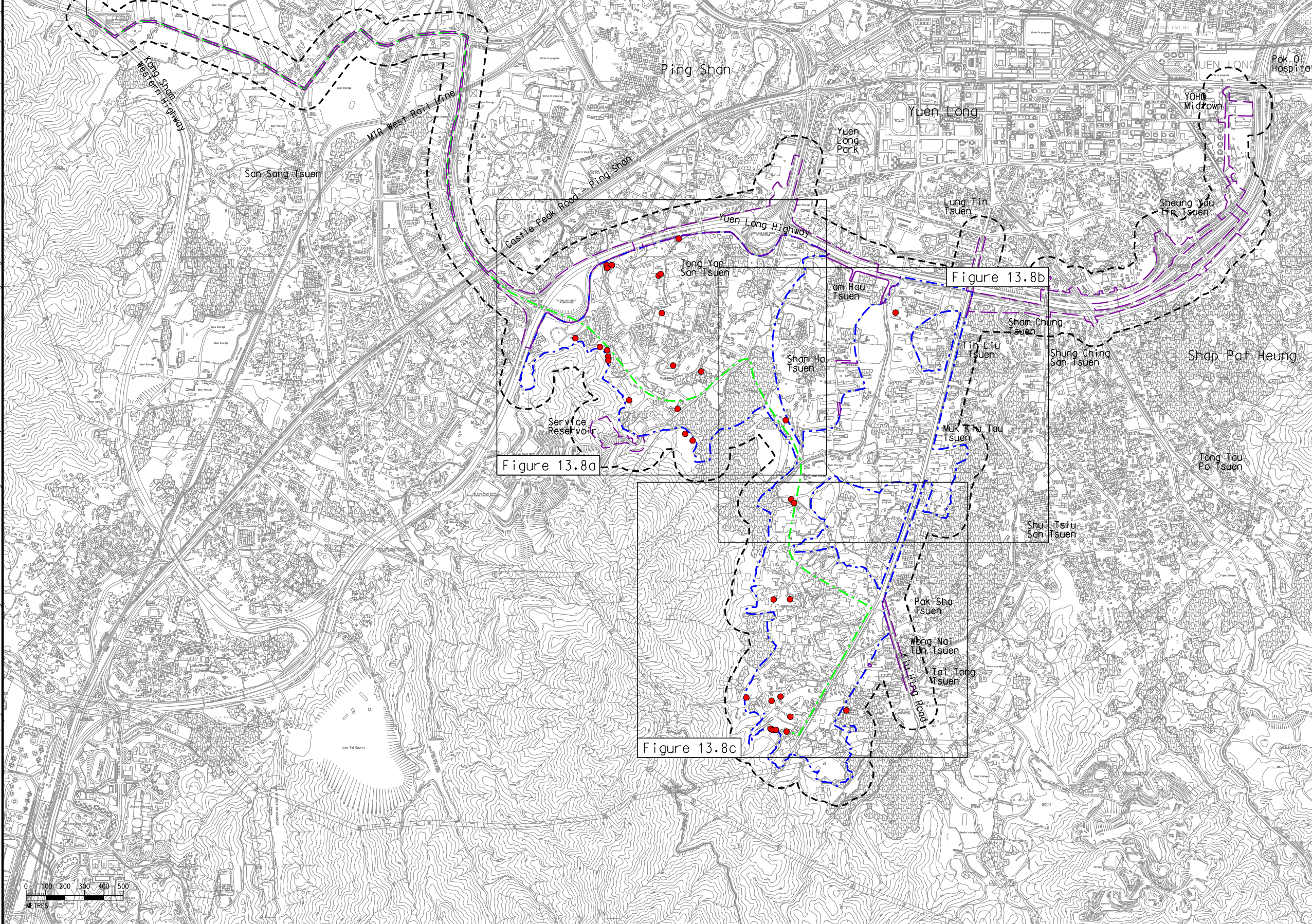


Figure 13.8a

Figure 13.8b

Figure 13.8c

Rev	Description	By	Date
C	THIRD ISSUE	GL	07/17
B	SECOND ISSUE	GL	05/17
A	FIRST ISSUE	GL	12/16


Consultant
ARUP

Contract No. and Title
Agreement No. CE 35/2012(CE)
Planning and Engineering Study for
Housing Sites in Yuen Long South
- Investigation


Drawing title
Grave Location Map
with Proposed Layout
(Sheet 1 of 4)

Drawing no. Figure 13.8		Rev. C	
Drawn GL	Date 07/17	Checked FC	Approved FC
Scale 1:20000 ON A3		Status PRELIMINARY	

COPYRIGHT RESERVED



土木工程拓展署
Civil Engineering and
Development Department



規劃署
Planning
Department

