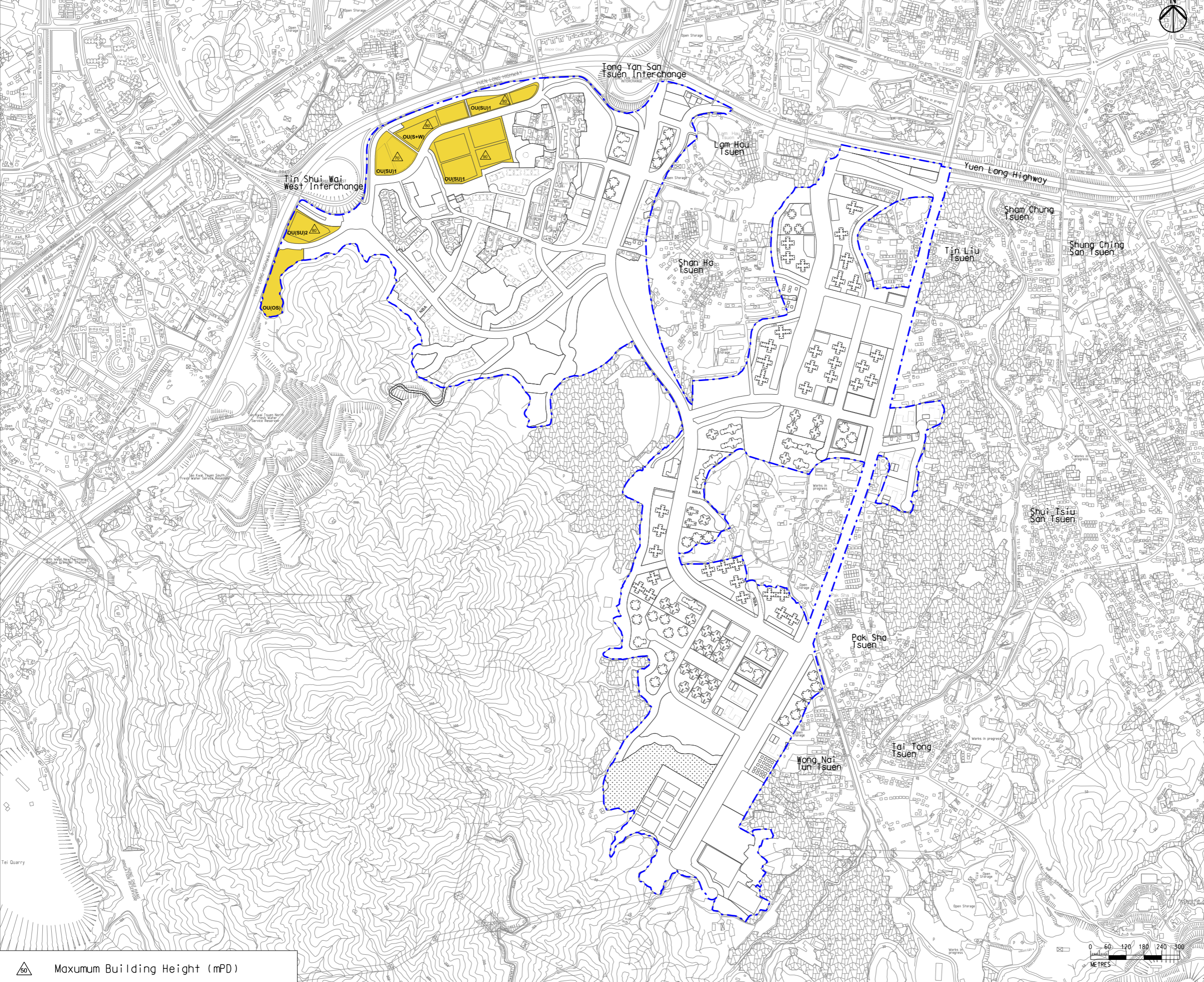


Printed by : 7/26/2017
 Filename : \\HKGNTS22\acoustic\env\project\228228\13 Drawing Deliverables\Report\Stage 3 EIA Report\Final\Ch 3 - Project Description and Construction Methodologies\Figure 3.3 - Locations of Storage and Workshop Land Use in RDP

DO NOT SCALE DRAWING. CHECK ALL DIMENSIONS ON SITE.
 ALL RIGHTS RESERVED.
 © 2016 ARUP & PARTNERS HONG KONG LIMITED.



Legend

Development Area

Land Use Zoning

- Other Specified Uses (Open Storage) (OU(OS))
- Other Specified Uses (Storage Use) 1 (OU(SU)1)
- Other Specified Uses (Storage Use) 2 (OU(SU)2)
- Other Specified Uses (Storage and Workshop) (OU(S+W))

C	THIRD ISSUE	GL	07/17
B	SECOND ISSUE	GL	05/17
A	FIRST ISSUE	GL	05/17
Rev	Description	By	Date

Consultant
ARUP

Contract No. and Title
 Agreement No. CE 35/2012(CE)
 Planning and Engineering Study for
 Housing Sites in Yuen Long South
 - Investigation

Drawing title
**Locations of Storage and
 Workshop Land Use in RDP**

Drawing no. Figure 3.3		Rev. C	
Drawn GL	Date 07/17	Checked FC	Approved FC
Scale AS SHOWN		Status PRELIMINARY	

COPYRIGHT RESERVED

土木工程拓展署
 Civil Engineering and
 Development Department

規劃署
 Planning
 Department

Maximum Building Height (mPD)

