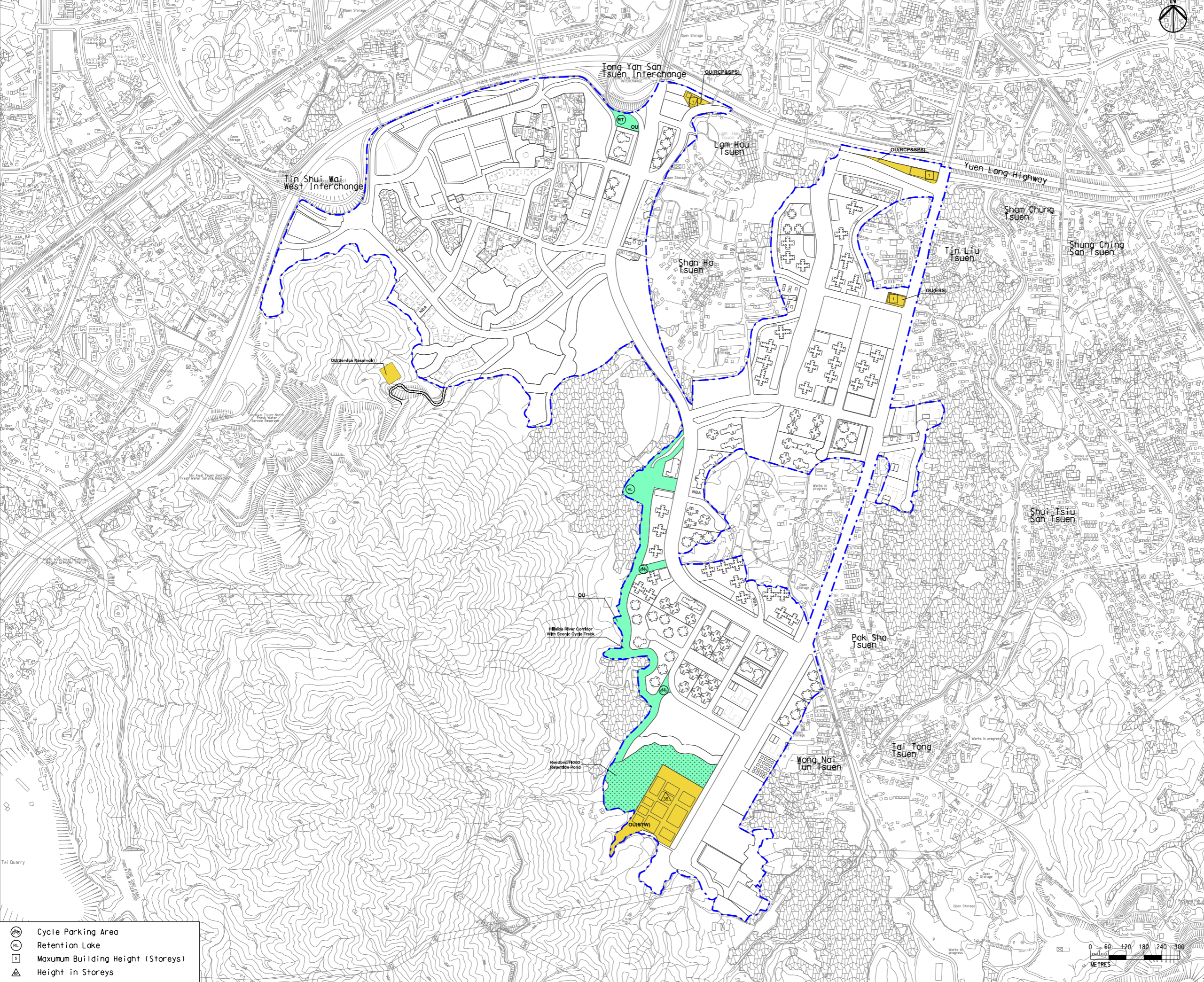


Printed by : 7/26/2017
 Filename : \\HKGNTS22\acoustic\env\project\228228\13 Drawing Deliverables\Report\Stage 3 EIA Report\Final\Ch 3 - Project Description and Construction Methodologies\Figure 3.6 - Locations of Public Utilities Land Use in RODP.dgn

DO NOT SCALE DRAWINGS. CHECK ALL DIMENSIONS ON SITE.
 ALL RIGHTS RESERVED.
 © 2016 ARUP & PARTNERS HONG KONG LIMITED.



- Legend**
- Development Area
 - Land Use Zoning**
 - Other Specified Uses (Sewage Treatment Works) (OU(STW))
 - Other Specified Uses (Refuse Collection Point and Sewage Pumping Station) (OU(RCP&SPS))
 - Other Specified Uses (Electricity Substation) (OU(ESS))
 - Other Specified Uses (Service Reservoir) (OU(Service Reservoir))
 - Other Specified Uses (Retention Tank) (OU)
 - Other Specified Uses (Hillside River Corridor with Scenic Cycle Track) (OU)

C	THIRD ISSUE	GL	07/17
B	SECOND ISSUE	GL	05/17
A	FIRST ISSUE	GL	02/17
Rev	Description	By	Date

Consultant
ARUP

Contract No. and Title
 Agreement No. CE 35/2012(CE)
 Planning and Engineering Study for Housing Sites in Yuen Long South - Investigation

Drawing title
Locations of Public Utilities Land Use in RDP

Drawing no. Figure 3.6		Rev. C	
Drawn GL	Date 07/17	Checked FC	Approved FC
Scale AS SHOWN		Status PRELIMINARY	

COPYRIGHT RESERVED



土木工程拓展署
Civil Engineering and Development Department



規劃署
Planning Department

- Cycle Parking Area
- Retention Lake
- Maximum Building Height (Storeys)
- Height in Storeys

