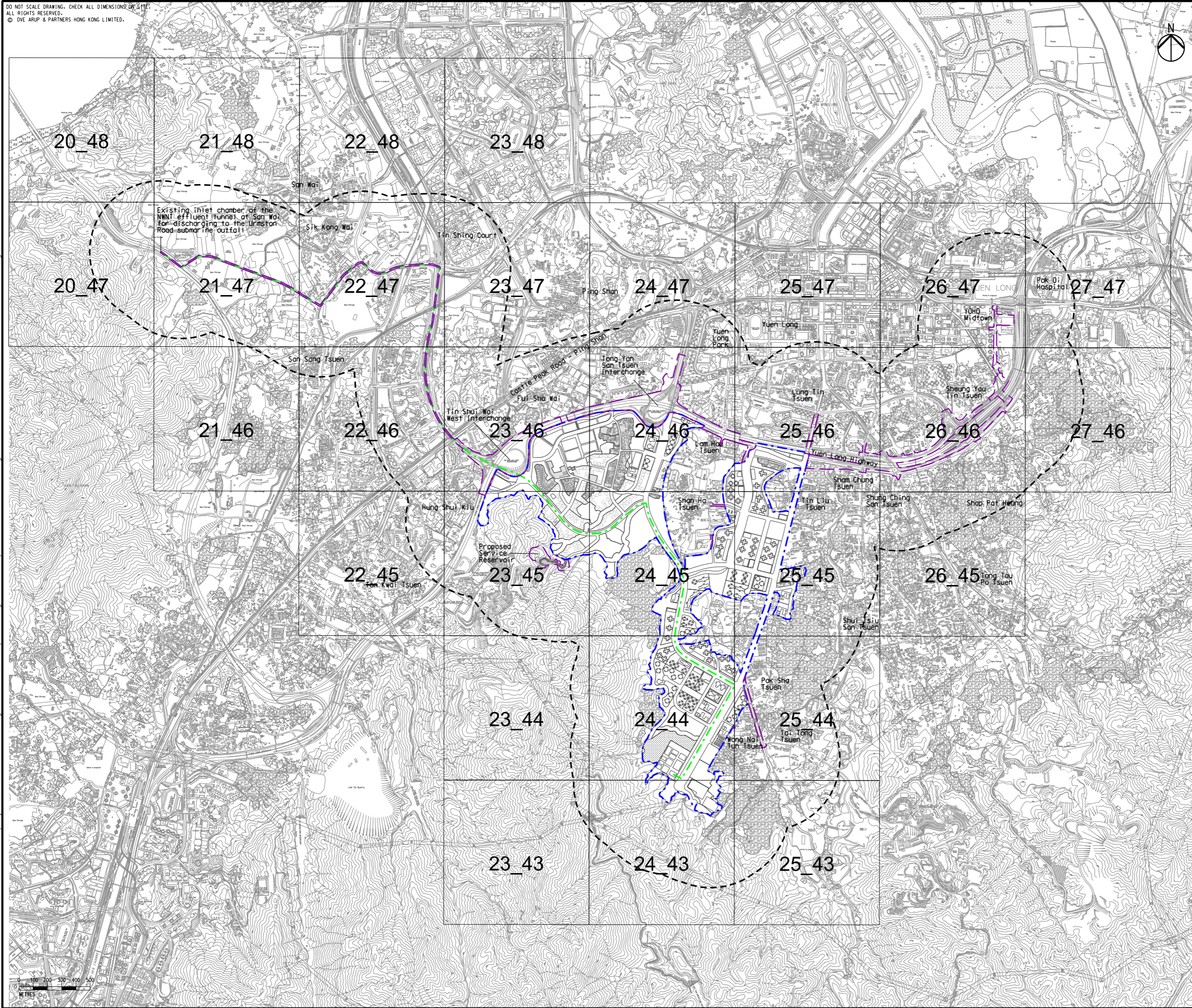


DO NOT SCALE DRAWING. CHECK ALL DIMENSIONS ON SITE.
ALL RIGHTS RESERVED.
© OVE ARUP & PARTNERS HONG KONG LIMITED.

Printed by : 7/23/2017
Filename : \\HKGN\TS22\acoustic\env\project\228228\13 Drawing Deliverables\Report\Stage 3 EIA Report\Final\Ch 4 Air\Figure 4.1 - Locations of Concerned PATH Grids.dgn



- Legend**
- Potential Development Area (PDA)
 - Works Boundary Outside PDA
 - · — · New Sewer from YLS STW to the Existing Inlet Chamber of the NWNT Effluent Tunnel at San Wai for Discharging to the Urmston Road Submarine Outfall
 - 500m Assessment Area
 - R5 (Existing Development Area within PDA to be retained)
 - PATH Grid

C	THIRD ISSUE	GL	07/17
B	SECOND ISSUE	GL	05/17
A	FIRST ISSUE	GL	02/17
Rev	Description	By	Date


Consultant
ARUP

Contract No. and Title
Agreement No. CE 35/2012(CE)
Planning and Engineering Study for Housing Sites in Yuen Long South - Investigation


Drawing title
Locations of Concerned PATH Grids

Drawing no. Figure 4.1		Rev. C	
Drawn GL	Date 07/17	Checked FC	Approved FC
Scale 1:25000 @A3		Status PRELIMINARY	

COPYRIGHT RESERVED



土木工程拓展署
Civil Engineering and
Development Department



規劃署
Planning
Department