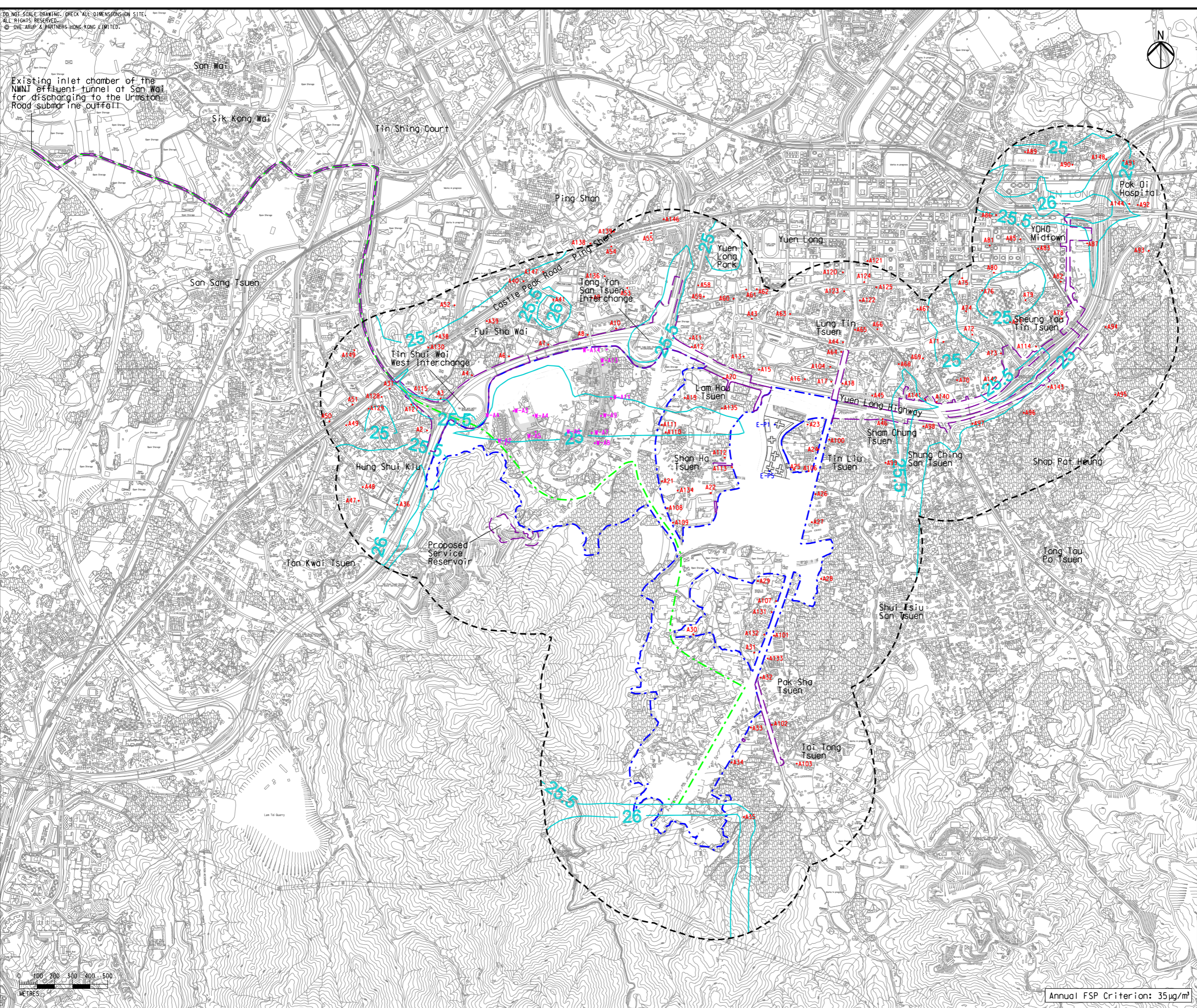


Printed by : 7/23/2017  
 Filename : \\HKGNTS22\acoustic\env\project\228228\13 Drawing Deliverables\Report\Stage 3 EIA Report\Final\Ch 4 Air Figure 4.12f - Contours of Cumulative Annual FSP Concentrations at 1.5m above Ground.dgn

DO NOT SCALE DRAWING. CHECK ALL DIMENSIONS ON SITE.  
 ALL RIGHTS RESERVED.  
 © OVE ARUP & PARTNERS HONG KONG LIMITED.

Existing inlet chamber of the NWNT effluent tunnel at San Wai for discharging to the Urmston Road submarine outfall



- Legend
- Potential Development Area (PDA)
  - Works Boundary Outside PDA
  - New Sewer from YLS STW to the Existing Inlet Chamber of the NWNT Effluent Tunnel at San Wai for Discharging to the Urmston Road Submarine Outfall
  - 500m Assessment Area for Operational Phase
  - R5 (Existing Development Area within PDA to be retained)
  - 35 — FSP Contour,  $\mu\text{g}/\text{m}^3$
  - Planned Air Sensitive Receiver
  - Existing Air Sensitive Receiver (within PDA)
  - Existing Air Sensitive Receiver (outside PDA)

C	THIRD ISSUE	GL	07/17
B	SECOND ISSUE	GL	05/17
A	FIRST ISSUE	GL	02/17
Rev	Description	By	Date

Consultant  
**ARUP**

Contract No. and Title  
 Agreement No. CE 35/2012(CE)  
 Planning and Engineering Study for Housing Sites in Yuen Long South - Investigation

Drawing title  
 Contours of Cumulative Annual FSP Concentrations at 1.5m above Ground (Year 2027)

Drawing no. <b>Figure 4.12f</b>		Rev. <b>C</b>	
Drawn GL	Date 07/17	Checked FC	Approved FC
Scale 1:20000 ON A3		Status PRELIMINARY	

COPYRIGHT RESERVED



土木工程拓展署  
Civil Engineering and Development Department



規劃署  
Planning Department

Annual FSP Criterion:  $35 \mu\text{g}/\text{m}^3$