

DO NOT SCALE DRAWING. CHECK ALL DIMENSIONS ON SITE.
 ALL RIGHTS RESERVED.
 © OVE ARUP & PARTNERS HONG KONG LIMITED.

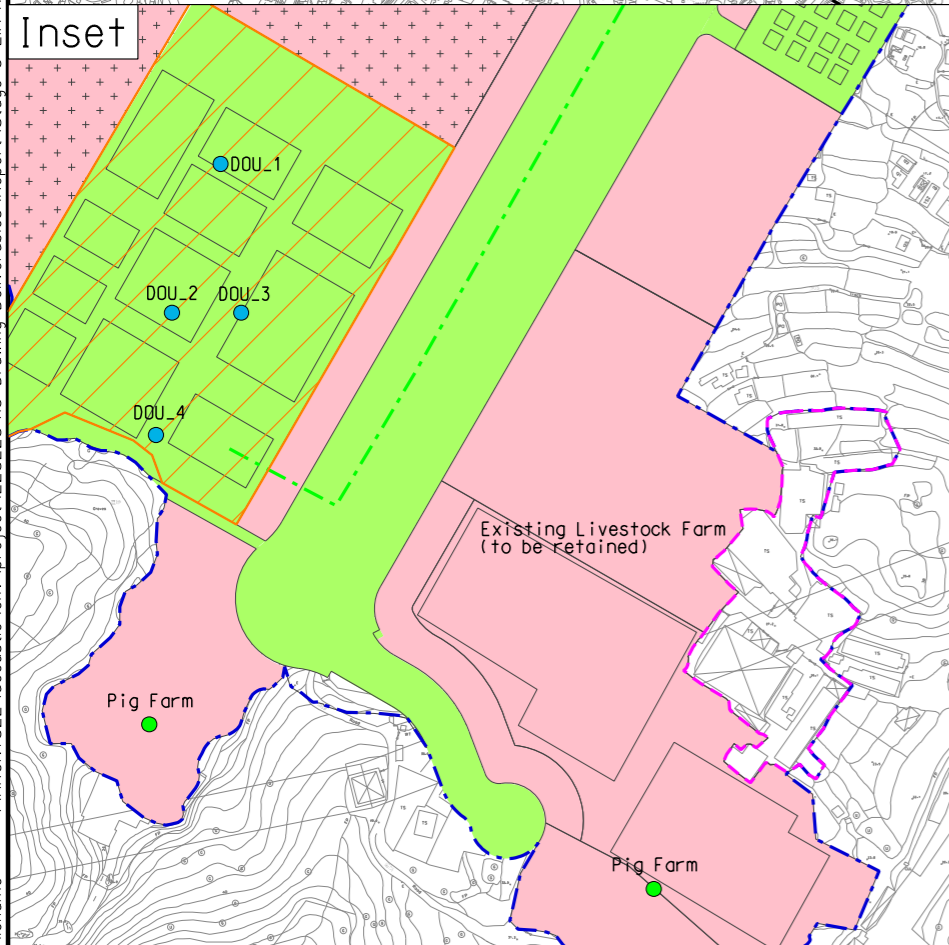
Existing inlet chamber of the
 NWNT effluent tunnel at San Wai
 for discharging to the Urmston
 Road submarine outfall



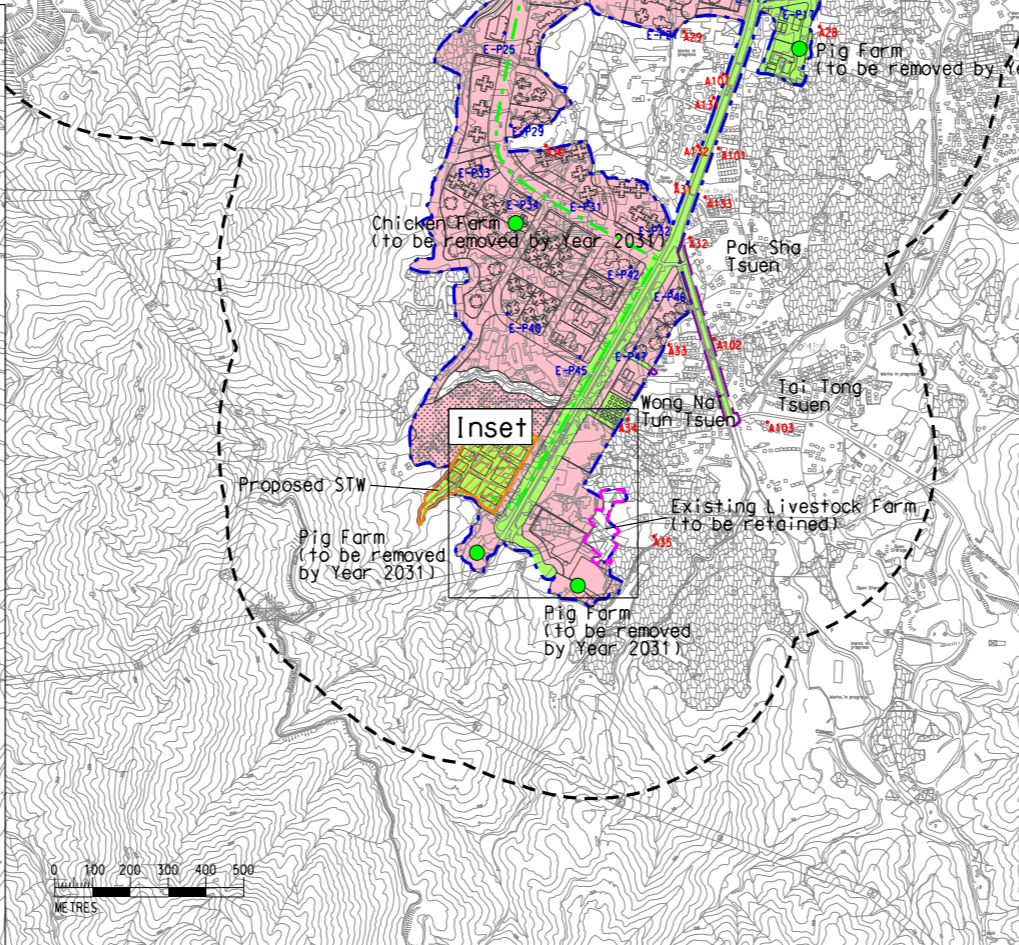
- Legend**
- Potential Development Area (PDA)
 - Works Boundary Outside PDA
 - New Sewer from YLS STW to the Existing Inlet Chamber of the NWNT Effluent Tunnel at San Wai for Discharging to the Urmston Road Submarine Outfall
 - 500m Assessment Area for Operational Phase
 - Potential Odour Sources in STW
 - Proposed Refuse Collection Point and Sewage Pumping Station
 - Proposed Sewage Treatment Works
 - Existing Livestock Farm (to be retained)
 - Existing Livestock Farm (to be removed)
 - Phase 1 - Intake Year 2027
 - Phase 2 - Intake Year 2033
 - Phase 3 - Intake Year 2038
 - Phase 4 - Intake Year 2038
 - Planned Air Sensitive Receiver
 - Existing Air Sensitive Receiver (within PDA)
 - Existing Air Sensitive Receiver (outside PDA)

Printed by : 7/24/2017
 Filename : \\HKGNIS22\acoustic\env\project\228228\13 Drawing Deliverables\Report\Stage 3 EIA Report\Final\Ch 4 Air Figure 4.13 - Locations of Potential Odour Sources.dgn

Inset



Inset



C	THIRD ISSUE	GL	07/17
B	SECOND ISSUE	GL	05/17
A	FIRST ISSUE	GL	02/17
Rev	Description	By	Date

Consultant
ARUP

Contract No. and Title
 Agreement No. CE 35/2012(CE)
 Planning and Engineering Study for
 Housing Sites in Yuen Long South
 - Investigation

Drawing title
**Locations of Potential
 Odour Sources**

Drawing no. Figure 4.13		Rev. C	
Drawn GL	Date 07/17	Checked FC	Approved FC
Scale 1:20000 @A3	Status PRELIMINARY		

COPYRIGHT RESERVED



土木工程拓展署
Civil Engineering and
Development Department



規劃署
Planning
Department