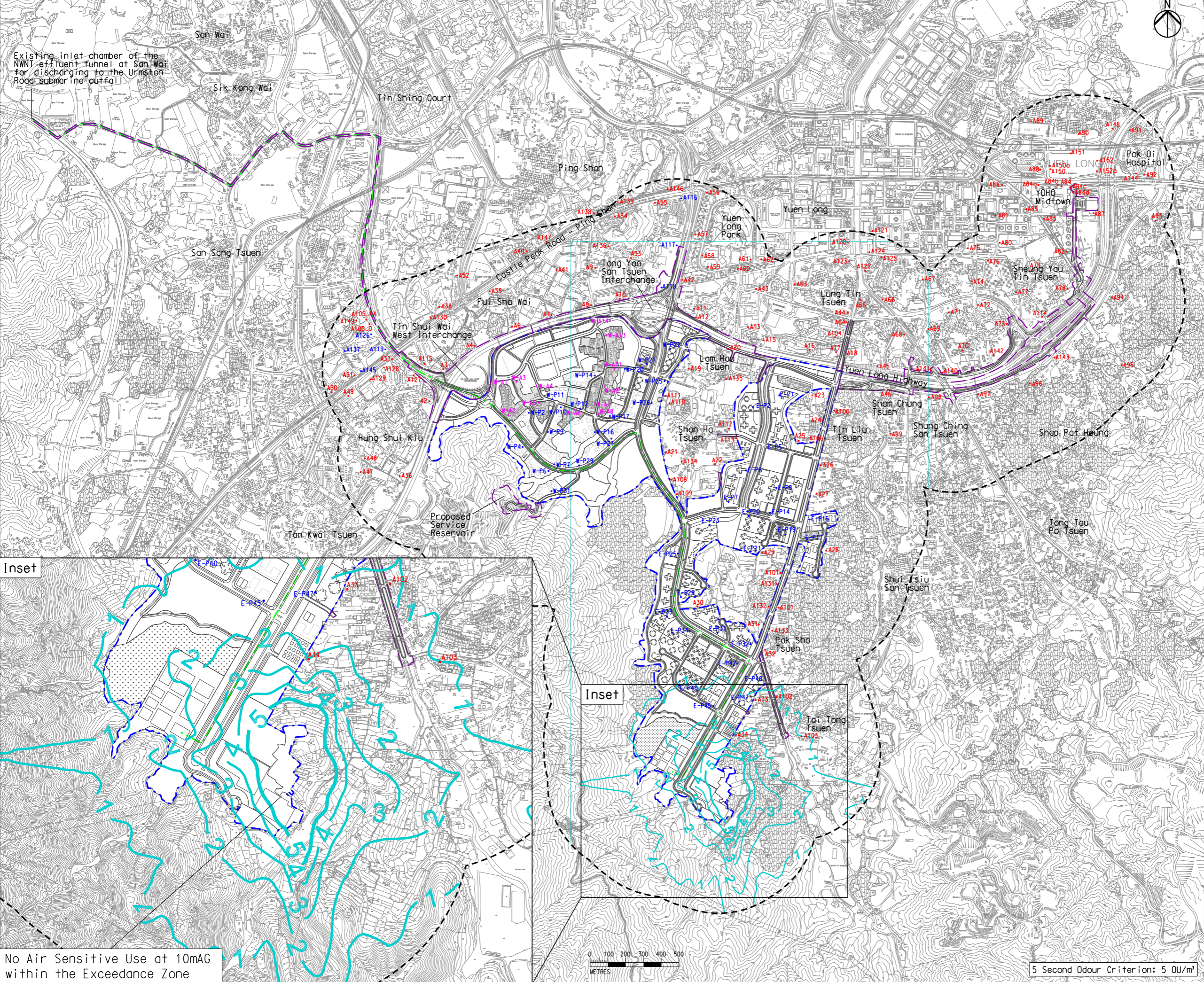


Printed by : 7/26/2017
 Filename : \\HKGN\GIS22\acoustic\env\project\228228\13 Drawing Deliverables\Report\Stage 3 EIA Report\Final\Ch 4 Air Figure 4.14b - Contours of Cumulative 5-second Odour Concentrations at 10m above Ground (Ultimate Scenario).dgn

DO NOT SCALE DRAWING. CHECK ALL DIMENSIONS ON SITE.
 ALL RIGHTS RESERVED.
 © OVE ARUP & PARTNERS HONG KONG LIMITED.



Existing inlet chamber of the NWNT effluent tunnel at San Wai for discharging to the Urmston Road submarine outfall

Inset

Inset

No Air Sensitive Use at 10mAG within the Exceedance Zone

- Legend**
- Potential Development Area (PDA)
 - Works Boundary Outside PDA
 - New Sewer from YLS STW to the Existing Inlet Chamber of the NWNT Effluent Tunnel at San Wai for Discharging to the Urmston Road Submarine Outfall
 - 500m Assessment Area for Operational Phase
 - R5 (Existing Development Area within PDA to be retained)
 - Odour Contour, OU/m^3
 - Planned Air Sensitive Receiver
 - Existing Air Sensitive Receiver (within PDA)
 - Existing Air Sensitive Receiver (outside PDA)

C	THIRD ISSUE	GL	07/17
B	SECOND ISSUE	GL	05/17
A	FIRST ISSUE	GL	02/17
Rev	Description	By	Date

Consultant
ARUP

Contract No. and Title
 Agreement No. CE 35/2012(CE)
 Planning and Engineering Study for Housing Sites in Yuen Long South - Investigation

Drawing title
 Contours of Cumulative 5-second Odour Concentrations at 10m above Ground (Ultimate Scenario)

Drawing no. Figure 4.14b		Rev. C	
Drawn GL	Date 07/17	Checked FC	Approved FC
Scale 1:20000 ON A3		Status PRELIMINARY	

COPYRIGHT RESERVED

土木工程拓展署
Civil Engineering and
Development Department

規劃署
Planning
Department

5 Second Odour Criterion: 5 OU/m^3