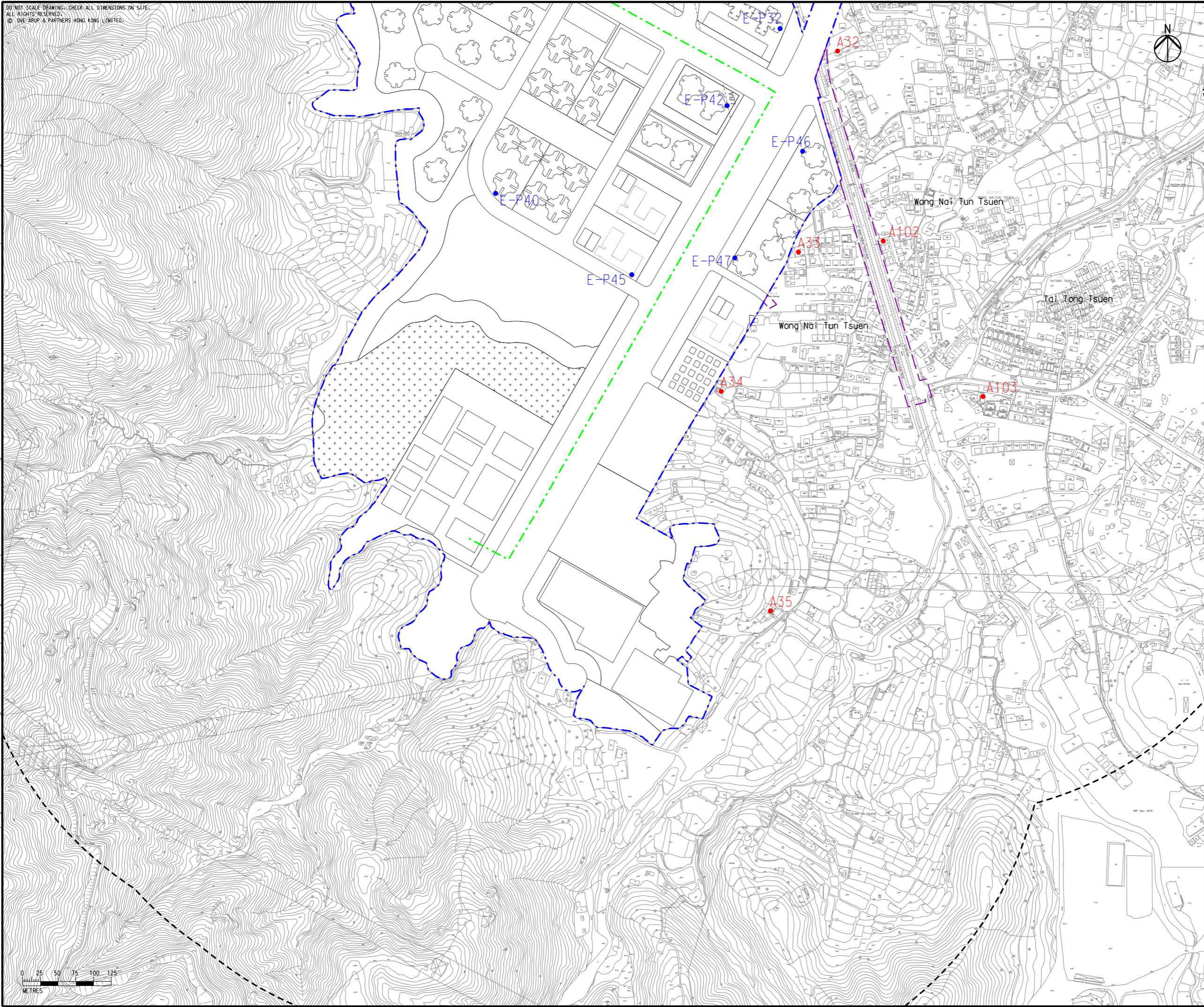


DO NOT SCALE DRAWING. CHECK ALL DIMENSIONS ON SITE.
 ALL RIGHTS RESERVED.
 © ONE ARUP & PARTNERS HONG KONG LIMITED.

Printed by : 7/23/2017
 Filename : \\HKGNTS22\acoustic\env\project\228228\13 Drawing Deliverables\Report\Stage 3 EIA Report\Final\Ch 4 Air\Figure 4.3e - Locations of Air Sensitive Receivers (Operational Phase).dgn



Legend

- Potential Development Area (PDA)
- Works Boundary Outside PDA
- New Sewer from YLS STW to the Existing Inlet Chamber of the NWNT Effluent Tunnel at San Wai for Discharging to the Urmston Road Submarine Outfall
- 500m Assessment Area for Operational Phase
- Planned Air Sensitive Receiver
- Existing Air Sensitive Receiver (within PDA)
- Existing Air Sensitive Receiver (outside PDA)
- R5 (Existing Development Area within PDA to be retained)

C	THIRD ISSUE	GL	07/17
B	SECOND ISSUE	GL	05/17
A	FIRST ISSUE	GL	02/17
Rev	Description	By	Date

Consultant
ARUP

Contract No. and Title
 Agreement No. CE 35/2012(CE)
 Planning and Engineering Study for Housing Sites in Yuen Long South - Investigation

Drawing title
 Locations of Air Sensitive Receivers (Operational Phase) (Sheet 6 of 8)

Drawing no. Figure 4.3e		Rev. C	
Drawn GL	Date 07/17	Checked FC	Approved FC
Scale 1:5000 @A3		Status PRELIMINARY	

COPYRIGHT RESERVED



土木工程拓展署
Civil Engineering and Development Department



規劃署
Planning Department