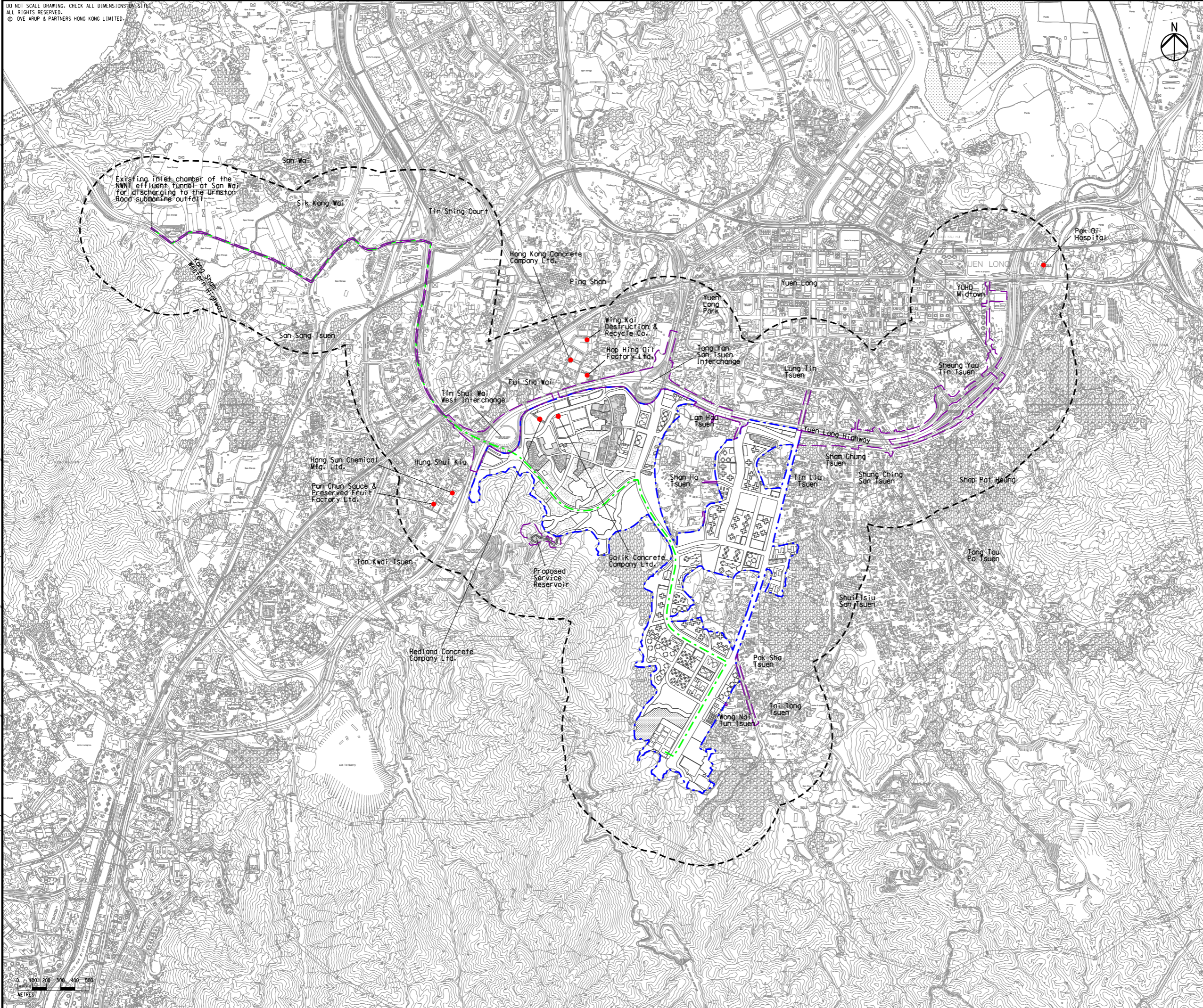


DO NOT SCALE DRAWING. CHECK ALL DIMENSIONS ON SITE.  
ALL RIGHTS RESERVED.  
© OVE ARUP & PARTNERS HONG KONG LIMITED.



Printed by : 7/23/2017  
Filename : \\HKGN\T22\228\13 Drawing Deliverables\Report\Stage 3 EIA Report\Final\Ch 4 Air Report\Final\Ch 4 Air Figure 4.4 - Locations of Industrial Emission Sources (Construction Phase).dgn



- Legend**
- Potential Development Area (PDA)
  - Works Boundary Outside PDA
  - New Sewer from YLS STW to the Existing Inlet Chamber of the NNWT Effluent Tunnel at San Wai for Discharging to the Urmston Road Submarine Outfall
  - 500m Assessment Area for Construction Phase
  - R5 (Existing Development Area within PDA to be retained)
  - Industrial Emission Sources

C	THIRD ISSUE	GL	07/17
B	SECOND ISSUE	GL	05/17
A	FIRST ISSUE	GL	02/17
Rev	Description	By	Date


Consultant  
**ARUP**

Contract No. and Title  
Agreement No. CE 35/2012(CE)  
Planning and Engineering Study for Housing Sites in Yuen Long South - Investigation

Drawing title  
**Locations of Industrial Emission Sources (Construction Phase)**

Drawing no.	<b>Figure 4.4</b>	Rev.	<b>C</b>
Drawn	Date	Checked	Approved
GL	07/17	FC	FC
Scale	1:25000 @A3	Status	<b>PRELIMINARY</b>

COPYRIGHT RESERVED



土木工程拓展署  
Civil Engineering and  
Development Department



規劃署  
Planning  
Department