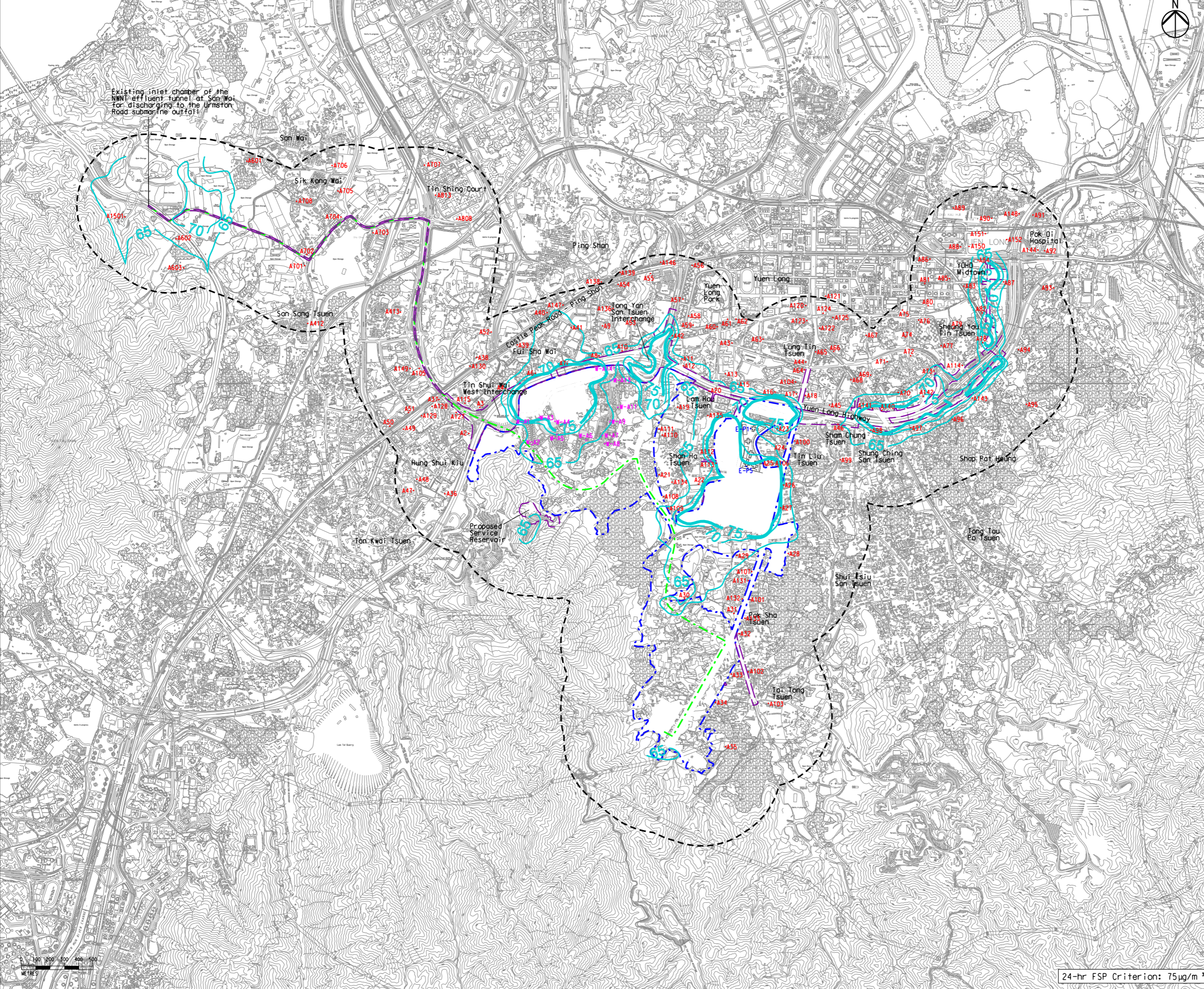


Printed by : 7/23/2017
 Filename : \\HKGNIS22\acoustic\env\project\228228\13 Drawing Deliverables\Report\Stage 3 EIA Report\Final\Ch 4 Air\Figure 4.6d - Contours of Unmitigated Cumulative 10th highest 24-hour FSP Concentrations (Tier 1) at 1.5m above

DO NOT SCALE DRAWING. CHECK ALL DIMENSIONS ON SITE.
 ALL RIGHTS RESERVED.
 © OVE ARUP & PARTNERS HONG KONG LIMITED.



- Legend**
- Potential Development Area (PDA)
 - Works Boundary Outside PDA
 - New Sewer from YLS STW to the Existing Inlet Chamber of the NWNT Effluent Tunnel at San Wai for Discharging to the Urmston Road Submarine Outfall
 - 500m Assessment Area for Construction Phase
 - R5 (Existing Development Area within PDA to be retained)
 - FSP Contour, $\mu\text{g}/\text{m}^3$
 - Planned Air Sensitive Receiver
 - Existing Air Sensitive Receiver (within PDA)
 - Existing Air Sensitive Receiver (outside PDA)

C	THIRD ISSUE	GL	07/17
B	SECOND ISSUE	GL	05/17
A	FIRST ISSUE	GL	02/17
Rev	Description	By	Date


Consultant
ARUP

Contract No. and Title
 Agreement No. CE 35/2012(CE)
 Planning and Engineering Study for Housing Sites in Yuen Long South - Investigation

Drawing title
 Contours of Unmitigated Cumulative 10th highest 24-hour FSP Concentrations (Tier 1) at 1.5m above Ground (Year 2028)

Drawing no. Figure 4.6d		Rev. C	
Drawn GL	Date 07/17	Checked FC	Approved FC
Scale 1:25000 ON A3		Status PRELIMINARY	

COPYRIGHT RESERVED



土木工程拓展署
Civil Engineering and
Development Department



規劃署
Planning and
Development Department

24-hr FSP Criterion: $75\mu\text{g}/\text{m}^3$