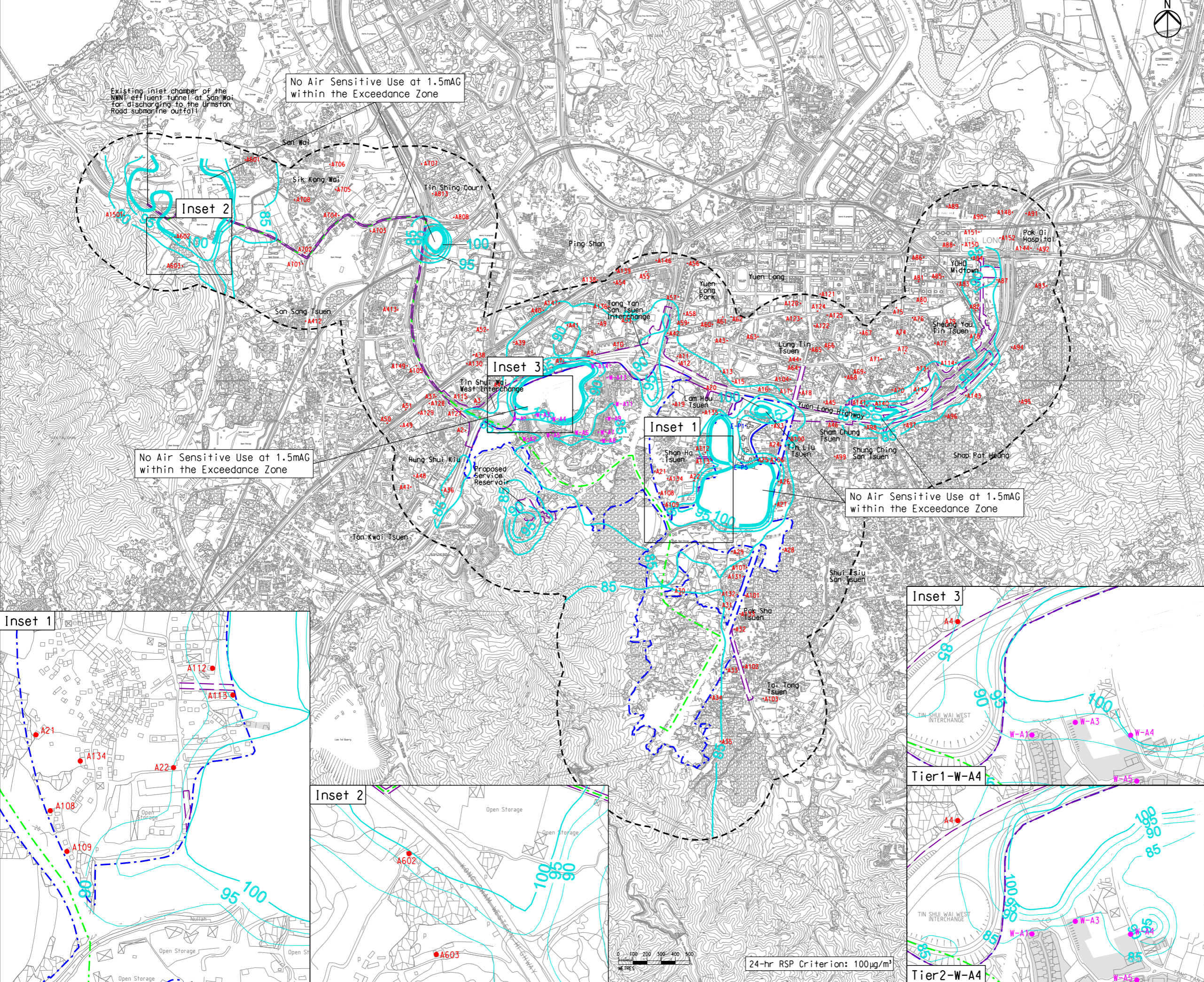


Printed by : 7/23/2017
 Filename : \\HKGNTS22\acoustic\env\project\228228\13 Drawing Deliverables\Report\Stage 3 EIA Report\Final\Ch 4 Air\Figure 4.7b - Contours of Mitigated Cumulative 10th highest 24-hour RSP Concentrations at 1.5m above Ground (Y)

DO NOT SCALE DRAWING. CHECK ALL DIMENSIONS ON SITE.
 ALL RIGHTS RESERVED.
 © OVE ARUP & PARTNERS HONG KONG LIMITED.



- Legend**
- Potential Development Area (PDA)
 - Works Boundary Outside PDA
 - New Sewer from YLS STW to the Existing Inlet Chamber of the NWT Effluent Tunnel at San Wai for Discharging to the Urmston Road Submarine Outfall
 - 500m Assessment Area for Construction Phase
 - R5 (Existing Development Area within PDA to be retained)
 - RSP Contour, $\mu\text{g}/\text{m}^3$
 - Planned Air Sensitive Receiver
 - Existing Air Sensitive Receiver (within PDA)
 - Existing Air Sensitive Receiver (outside PDA)

C	THIRD ISSUE	GL	07/17
B	SECOND ISSUE	GL	05/17
A	FIRST ISSUE	GL	02/17
Rev	Description	By	Date

Consultant
ARUP

Contract No. and Title
 Agreement No. CE 35/2012(CE)
 Planning and Engineering Study for Housing Sites in Yuen Long South - Investigation

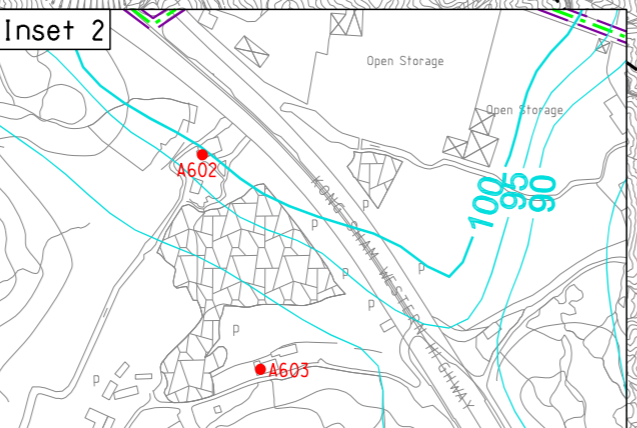
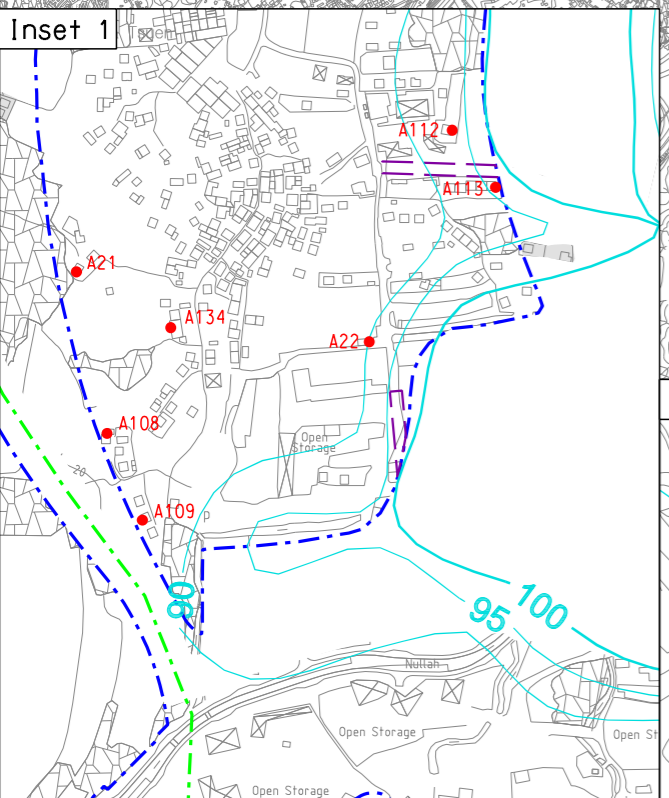
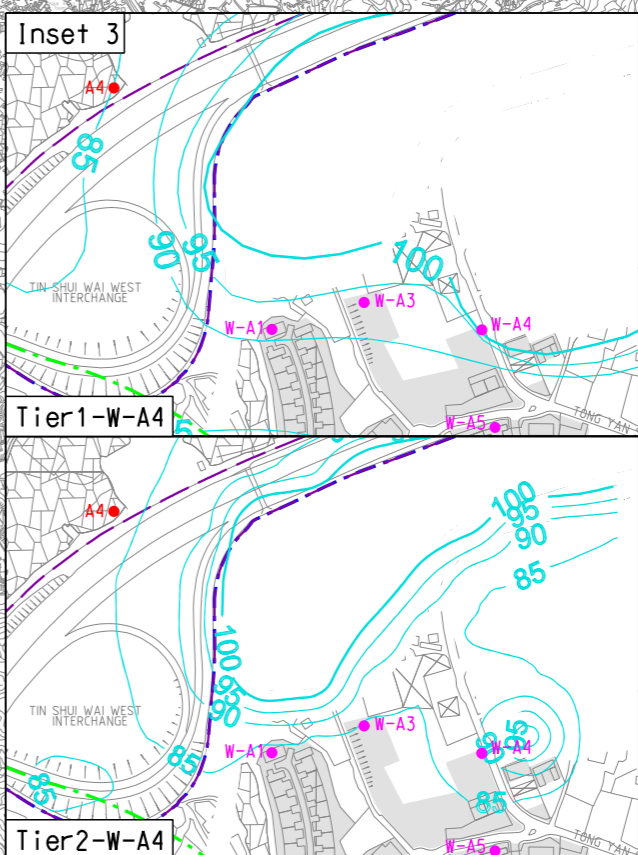
Drawing title
 Contours of Mitigated Cumulative 10th highest 24-hour RSP Concentrations at 1.5m above Ground (Year 2028)

Drawing no. Figure 4.7b		Rev. C	
Drawn GL	Date 07/17	Checked FC	Approved FC
Scale 1:25000 ON A3		Status PRELIMINARY	

COPYRIGHT RESERVED


 土木工程拓展署
 Civil Engineering and
 Development Department


 規劃署
 Planning
 Department



24-hr RSP Criterion: $100\mu\text{g}/\text{m}^3$