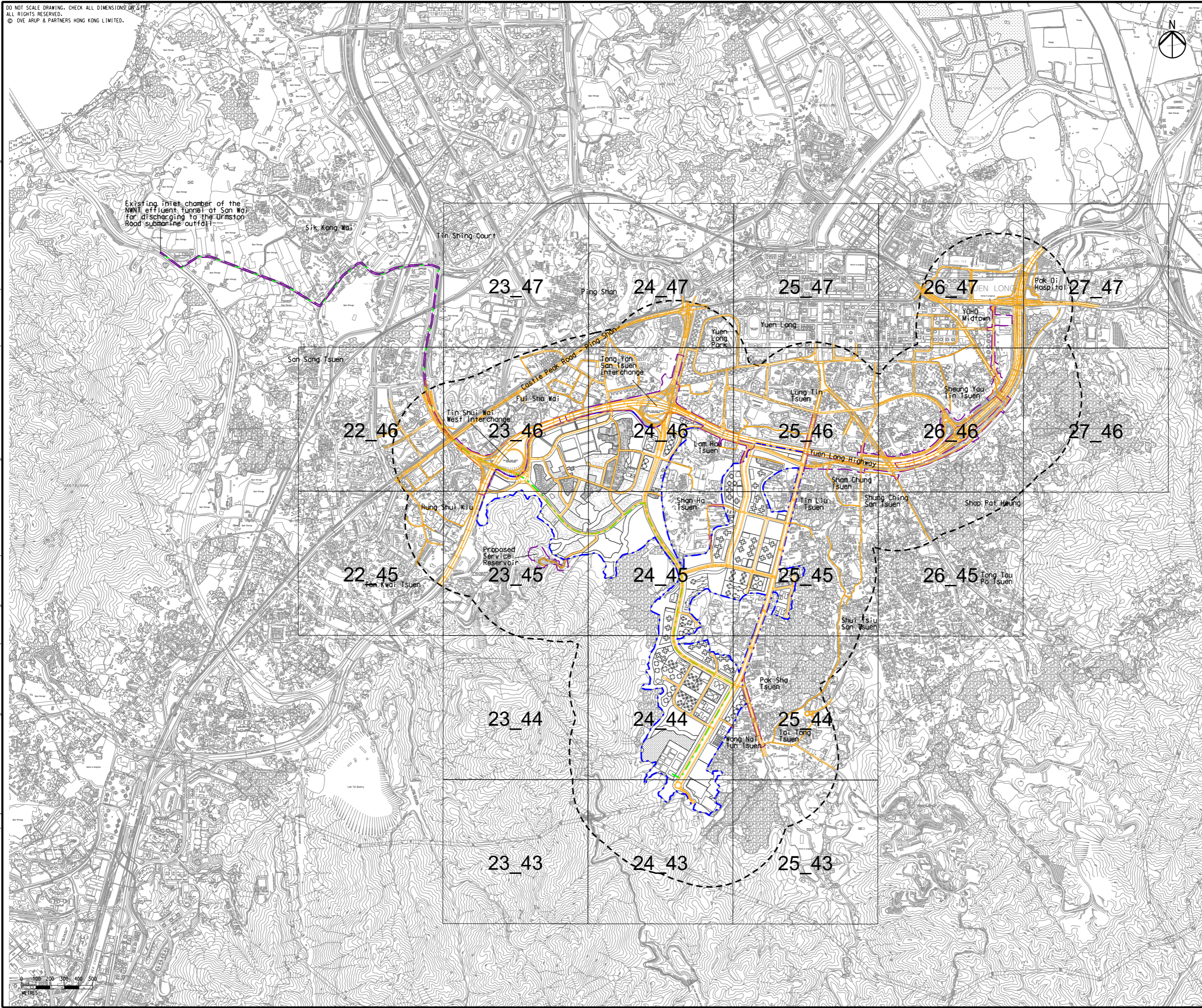


DO NOT SCALE DRAWING. CHECK ALL DIMENSIONS ON SITE.  
ALL RIGHTS RESERVED.  
© OVE ARUP & PARTNERS HONG KONG LIMITED.

Printed by : 7/23/2017  
Filename : \\HKGNTS22\acoustic\env\project\228228\13 Drawing Deliverables\Report\Stage 3 EIA Report\Final\Ch 4 Air\Figure 4.9b - Locations of Open Roads (Operational Phase, Year 2042).dgn



- Legend
- Potential Development Area (PDA)
  - Works Boundary Outside PDA
  - New Sewer from YLS STW to the Existing Inlet Chamber of the NWNT Effluent Tunnel at San Wai for Discharging to the Urmston Road Submarine Outfall
  - 500m Assessment Area for Operational Phase
  - R5 (Existing Development Area within PDA to be retained)
  - Open Road
  - PATH Grid

|     |              |    |       |
|-----|--------------|----|-------|
| C   | THIRD ISSUE  | GL | 07/17 |
| B   | SECOND ISSUE | GL | 05/17 |
| A   | FIRST ISSUE  | GL | 02/17 |
| Rev | Description  | By | Date  |


Consultant  
**ARUP**

Contract No. and Title  
Agreement No. CE 35/2012(CE)  
Planning and Engineering Study for Housing Sites in Yuen Long South - Investigation


Drawing title  
Locations of Open Roads (Operational Phase, Year 2042)

|                                |               |                       |                |
|--------------------------------|---------------|-----------------------|----------------|
| Drawing no. <b>Figure 4.9b</b> |               | Rev. <b>C</b>         |                |
| Drawn<br>GL                    | Date<br>07/17 | Checked<br>FC         | Approved<br>FC |
| Scale<br>1:25000 @A3           |               | Status<br>PRELIMINARY |                |

COPYRIGHT RESERVED



土木工程拓展署  
Civil Engineering and  
Development Department



規劃署  
Planning  
Department