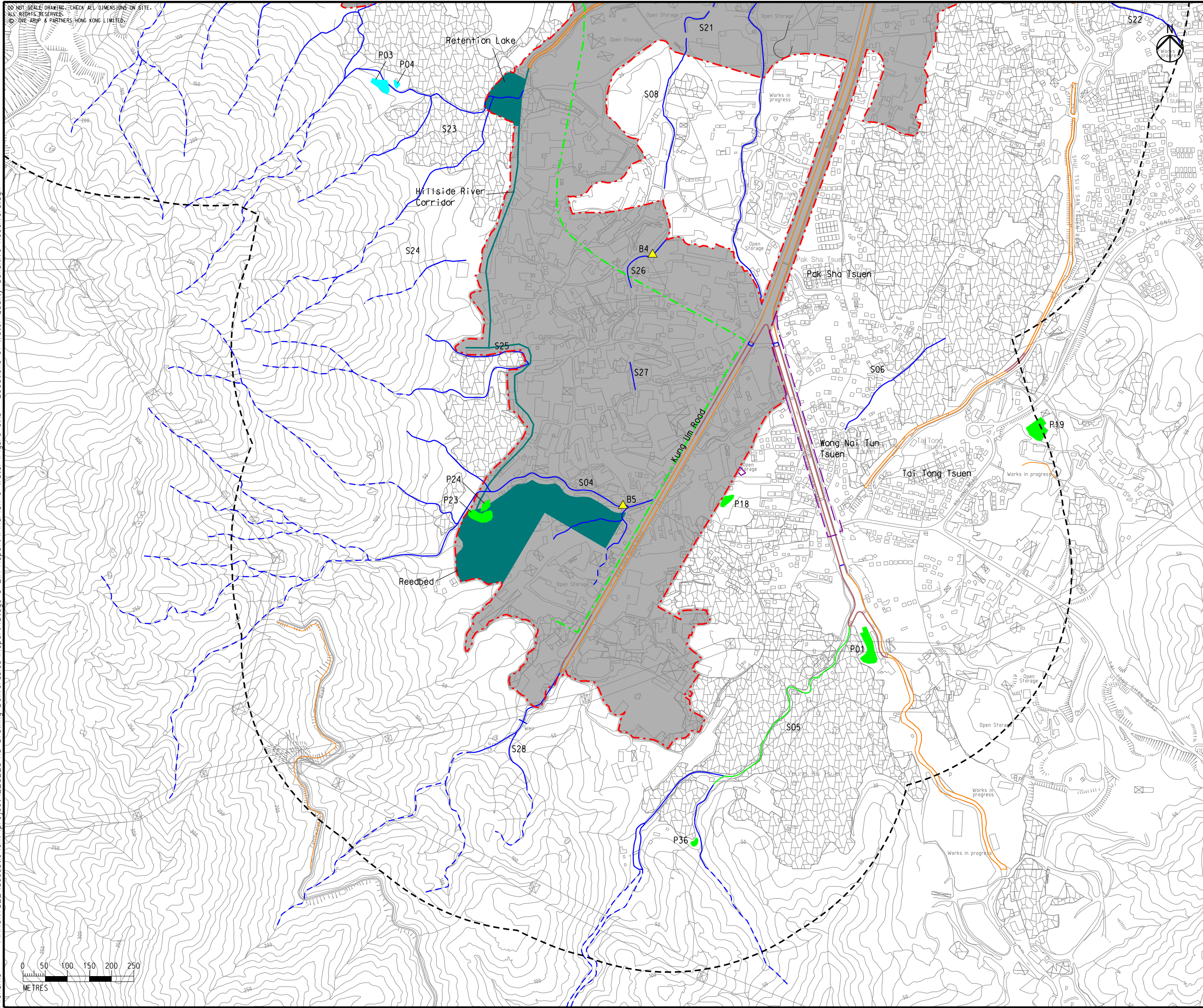


Printed by : 7/23/2017
 Filename : \\HKGNTS22\acoustic\env\project\228228\13 Drawing Deliverables\Report\Stage 3 EIA Report\Final\Ch 6 Water\Figure 6.1b - Locations of Water Quality Sensitive Receivers.dgn



- Legend**
- Potential Development Area (PDA)
 - Works Boundary Outside PDA
 - New Sewer from YLS STW to the Existing Inlet Chamber of the NWNT Effluent Tunnel at San Wai for Discharging to the Urmston Road Submarine Outfall
 - 500m Assessment Area
 - Watercourse
 - Watercourse (Seasonal)
 - Watercourse (Channelised)
 - Yuen Ka Tsuen EIS
 - Active Fish Pond
 - Inactive Fish Pond
 - Abandoned Fish Pond
 - Planned Stream Diversion / New Waterbodies
 - EPD Water Monitoring Station
 - Baseline Monitoring Location

Rev	Description	By	Date
B	THIRD ISSUE	GL	07/17
A	FIRST ISSUE	GL	04/17


Consultant
ARUP

Contract No. and Title
 Agreement No. CE 35/2012(CE)
 Planning and Engineering Study for Housing Sites in Yuen Long South - Investigation


Drawing title
 Locations of Water Quality Sensitive Receivers (Sheet 3 of 5)

Drawing no. Figure 6.1b		Rev. B	
Drawn GL	Date 07/17	Checked FC	Approved FC
Scale AS SHOWN		Status PRELIMINARY	

COPYRIGHT RESERVED



土木工程拓展署
Civil Engineering and Development Department



規劃署
Planning Department

