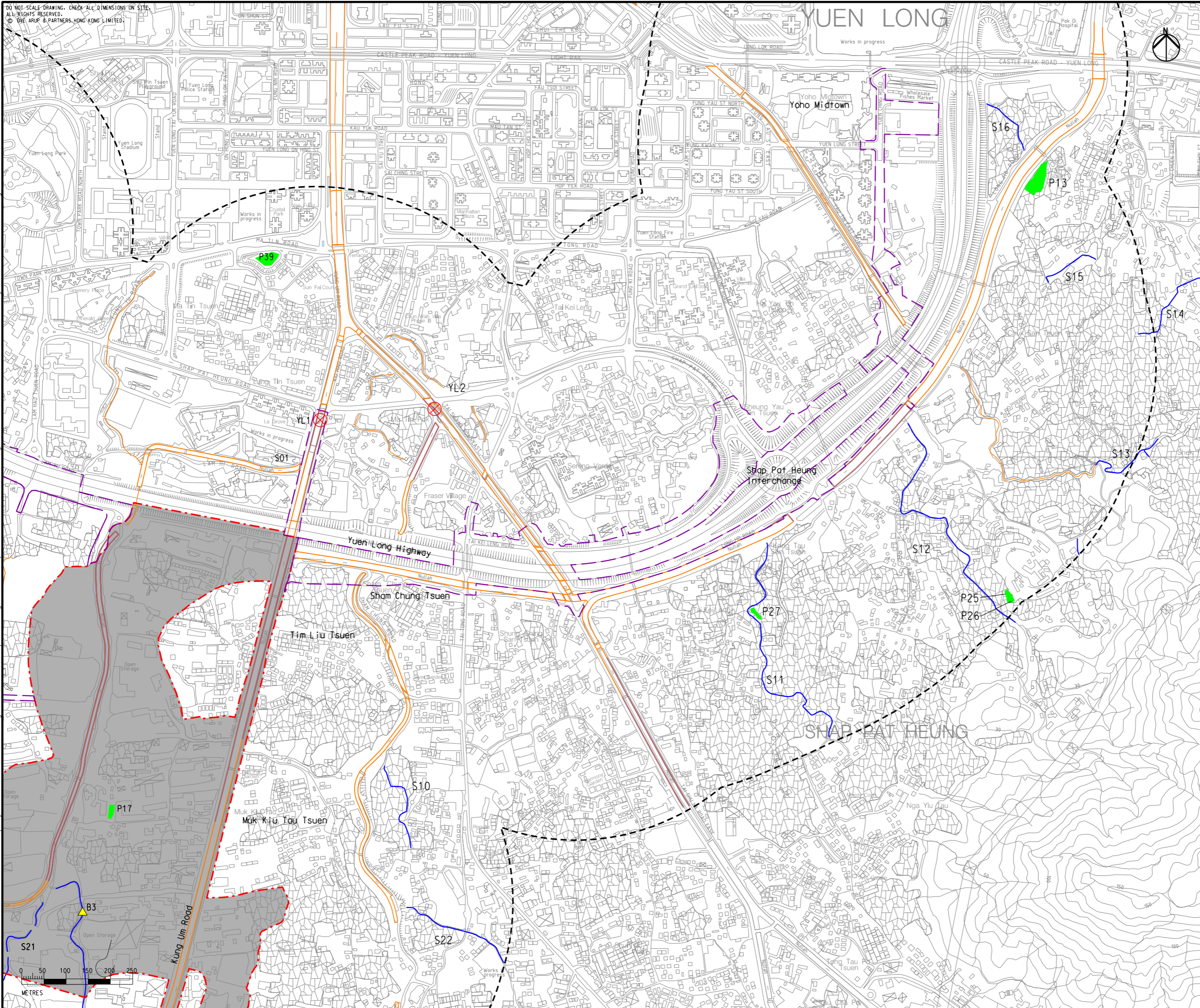


DO NOT SCALE DRAWING. CHECK ALL DIMENSIONS ON SITE.  
 ALL RIGHTS RESERVED.  
 © BY ARUP & PARTNERS HONG KONG LIMITED.

Printed by : 7/23/2017  
 Filename : \\HKGNTS22\acoustic\env\project\228228\13 Drawing Deliverables\Report\Stage 3 EIA Report\Final\Ch 6 Water\Figure 6.1c - Locations of Water Quality Sensitive Receivers.dgn



- Legend**
- Potential Development Area (PDA)
  - Works Boundary Outside PDA
  - New Sewer from YLS STW to the Existing Inlet Chamber of the NWT Effluent Tunnel at San Wai for Discharging to the Urmston Road Submarine Outfall
  - 500m Assessment Area
  - Watercourse
  - Watercourse (Seasonal)
  - Watercourse (Channelised)
  - Yuen Ka Tsuen EIS
  - Active Fish Pond
  - Inactive Fish Pond
  - Abandoned Fish Pond
  - Planned Stream Diversion / New Waterbodies
  - EPD Water Monitoring Station
  - ▲ Baseline Monitoring Location

B	SECOND ISSUE	GL	07/17
A	FIRST ISSUE	GL	05/17
Rev	Description	By	Date


Consultant  
**ARUP**

Contract No. and Title  
 Agreement No. CE 35/2012(CE)  
 Planning and Engineering Study for Housing Sites in Yuen Long South - Investigation


Drawing title  
**Locations of Water Quality Sensitive Receivers (Sheet 4 of 5)**

Drawing no. <b>Figure 6.1c</b>		Rev. <b>B</b>	
Drawn GL	Date 07/17	Checked FC	Approved FC
Scale AS SHOWN		Status PRELIMINARY	

COPYRIGHT RESERVED



土木工程拓展署  
Civil Engineering and Development Department



規劃署  
Planning Department