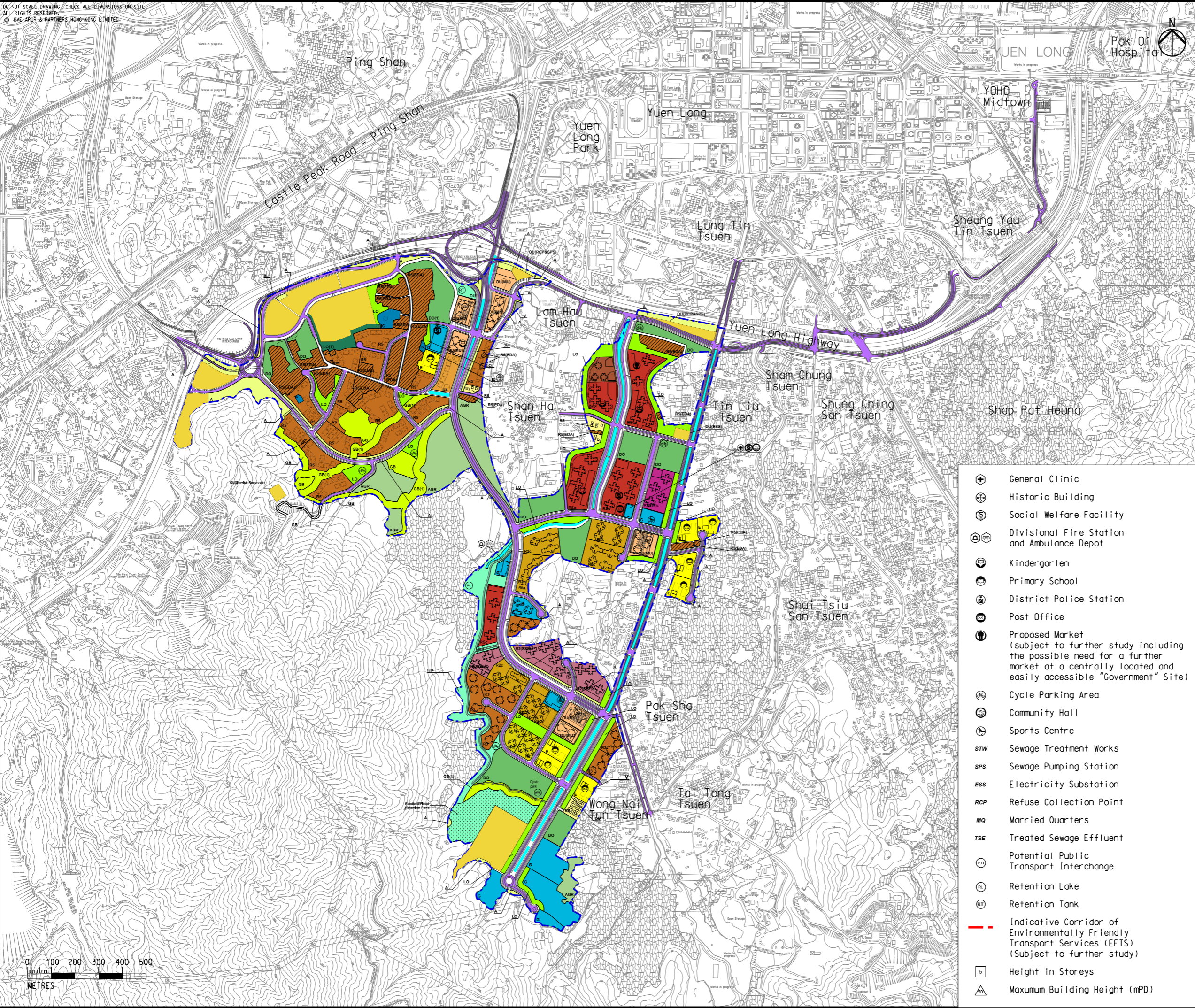


Printed by : 7/26/2017  
 Filename : \\HKGNTS22\acoustic\env\project\228228\13 Drawing Deliverables\Report\Stage 3 EIA Report\Final\Ch 7 Sewage\Figure 7.1 - Recommended Outline Development Plan.dgn



**Legend**

**Development Area**

**Land Use Zoning**

- Special Residential - Public Rental Housing (with commercial) (RSC)
- Residential - Zone 1 (Subsidised Sale Flats) (with commercial) (R1(SSF)c)
- Residential - Zone 1 (with commercial) (R1c)
- Residential - Zone 2 (Subsidised Sale Flats) (with commercial) (R2(SSF)c)
- Residential - Zone 2 (with commercial) (R2c)
- Residential - Zone 2 (R2)
- Residential - Zone 3 (R3)
- Residential - Zone 4 (R4)
- Residential - Zone 5 (R5)
- Residential - Zone 5 (Existing Development Area) (R5(EDA))
- Residential - Zone 6 (R6)
- Village Type Development (V)
- Other Specified Uses (Storage Use) 1 (OU(SU)1)
- Other Specified Uses (Storage Use) 2 (OU(SU)2)
- Other Specified Uses (Storage and Workshop) (OU(S+W))
- Other Specified Uses (Open Storage) (OU(OS))
- Other Specified Uses (Sewage Treatment Works) (OU(STW))
- Other Specified Uses (Refuse Collection Point and Sewage Pumping Station) (OU(RCP&SPS))
- Other Specified Uses (Electricity Substation) (OU(ESS))
- Other Specified Uses (Service Reservoir) (OU(Service Reservoir))
- Other Specified Uses (Mixed Use) (OU(MU))
- Other Specified Uses (Retention Tank)
- Other Specified Uses (Hillside River Corridor with Scenic Cycle Track)
- Government (G)
- Institution or Community (IC)
- Education (E)
- District Open Space (DO)
- Local Open Space (LO)
- Local Open Space (1) (LO(1))
- Amenity (A)
- Agriculture (AGR)
- Green Belt (GB)
- Green Belt (1) (GB(1))
- River Channels
- Road

- General Clinic
- Historic Building
- Social Welfare Facility
- Divisional Fire Station and Ambulance Depot
- Kindergarten
- Primary School
- District Police Station
- Post Office
- Proposed Market (subject to further study including the possible need for a further market at a centrally located and easily accessible "Government" Site)
- Cycle Parking Area
- Community Hall
- Sports Centre
- Sewage Treatment Works
- Sewage Pumping Station
- Electricity Substation
- Refuse Collection Point
- Married Quarters
- Treated Sewage Effluent
- Potential Public Transport Interchange
- Retention Lake
- Retention Tank
- Indicative Corridor of Environmentally Friendly Transport Services (EFTS) (Subject to further study)
- Height in Storeys
- Maximum Building Height (mPD)

A	FIRST ISSUE	GL 07/17
Rev	Description	By Date
Contract No. and Title		
Agreement No. CE 35/2012(CE)		
Planning and Engineering Study for Housing Sites in Yuen Long South - Investigation		
Drawing title		
<b>Recommended Outline Development Plan</b>		
Drawing no. <b>Figure 7.1</b> Rev. <b>A</b>		
Drawn	Date	Checked
GL	07/17	FC
Scale	AS SHOWN	Status
		PRELIMINARY
COPYRIGHT RESERVED		
土木工程拓展署 Civil Engineering and Development Department		規劃署 Planning Department