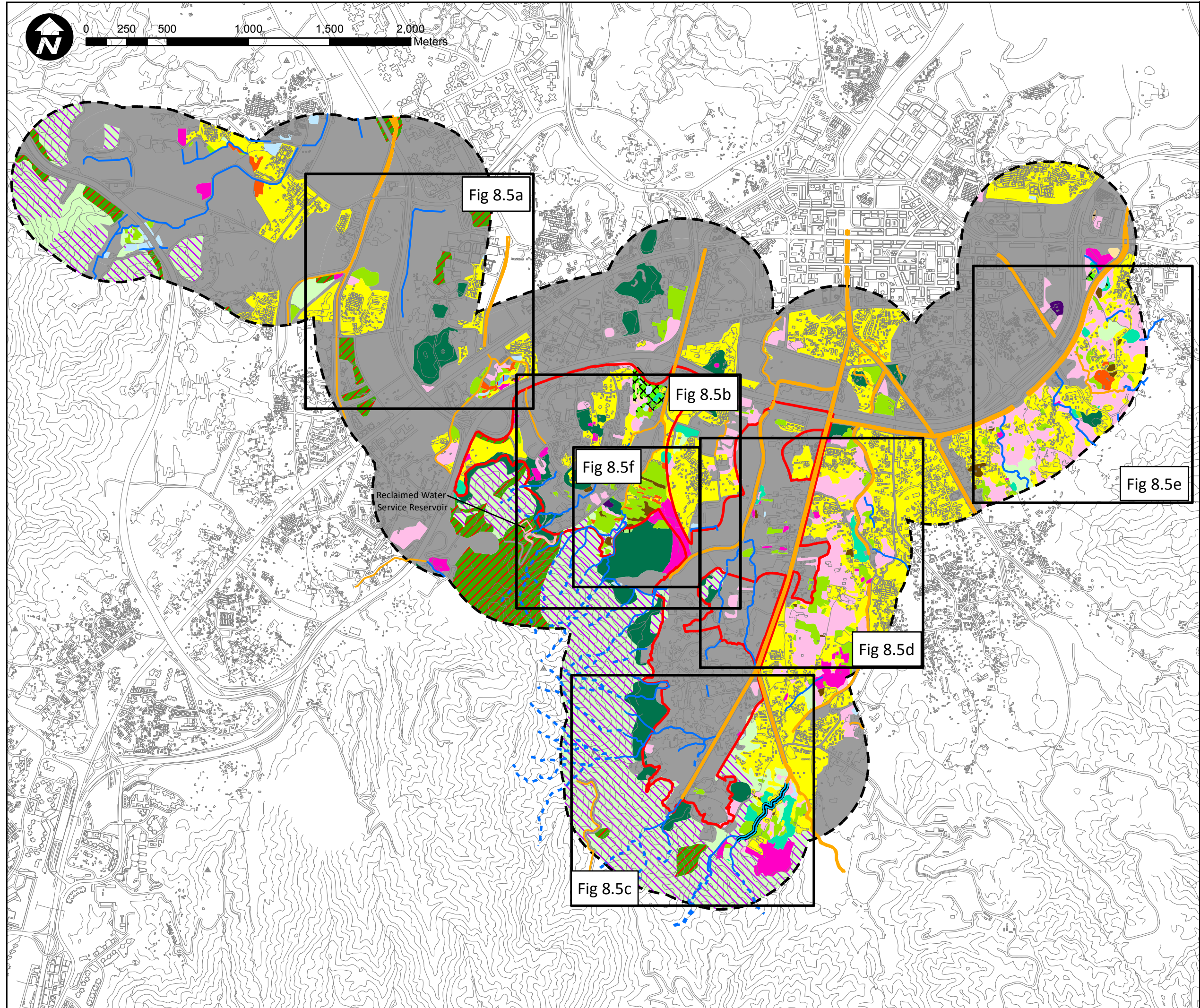


Document Path: Y:\arup-yls\Figures\mxd\_file\Habitat map\_20170622\Fig8.5\_Key\_Plan\_Species\_CI\_20170622.mxd



- PDA Boundary
- 500m Assessment Area
- Proposed Development Footprint
- Yeung Ka Tsuen EIS
- Seasonal Watercourse
- Watercourse
- Channelised Watercourse
- Pond
- Inactive Fish Pond
- Dry Agricultural Land
- Wet Agricultural Land
- Mixed Dry & Wet Agricultural Land
- Inactive Agricultural Land
- Seasonally Wet Grassland
- Marsh
- Reedbed
- Grassland
- Grassland/Shrubland
- Secondary Woodland
- Plantation
- Lychee Woodland
- Orchard
- Nursery
- Village Area
- Wasteland
- Developed Area

Fig 8.5a

Fig 8.5b

Fig 8.5f

Fig 8.5e

Fig 8.5d

Fig 8.5c

Reclaimed Water Service Reservoir

Rev	Description	By	Date
Consultant			
<b>ARUP</b>			
Contract No. and Title			
Agreement No. CE 35/2012 (CE)			
Planning and Engineering Study for Housing Sites in Yuen Long South - Investigation			
Drawing title			
Species (Non-avifauna Species and Plant Species) of Conservation Importance (Key Plan)			
Drawing no.		Rev.	
Figure 8.5		-	
Drawn	JH	Date	18 Jul 2017
Checked	LW	Approved	GL
Scale	1:22,000		Status

COPYRIGHT RESERVED

土木工程拓展署  
Civil Engineering and Development Department

規劃署  
Planning Department