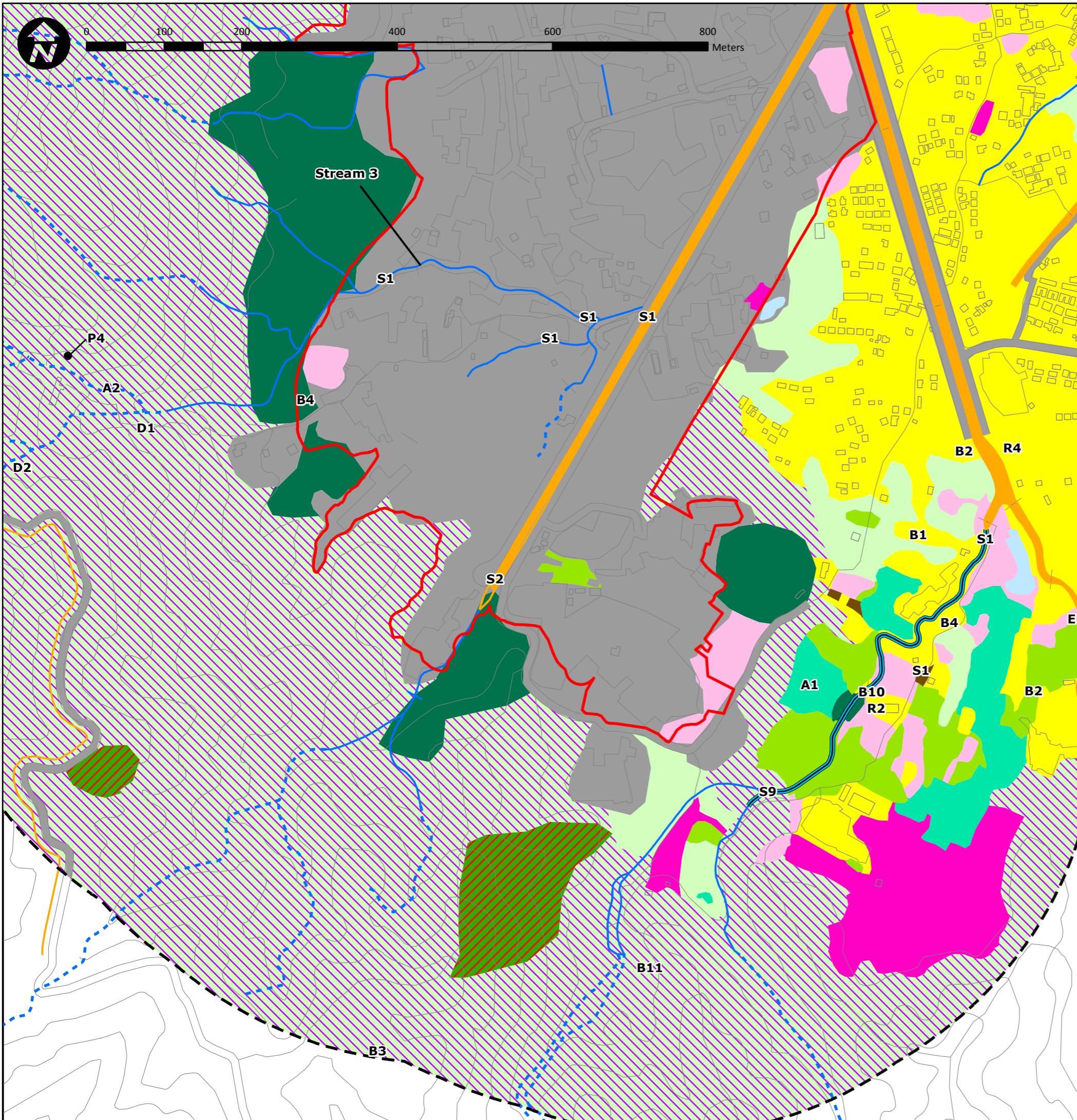


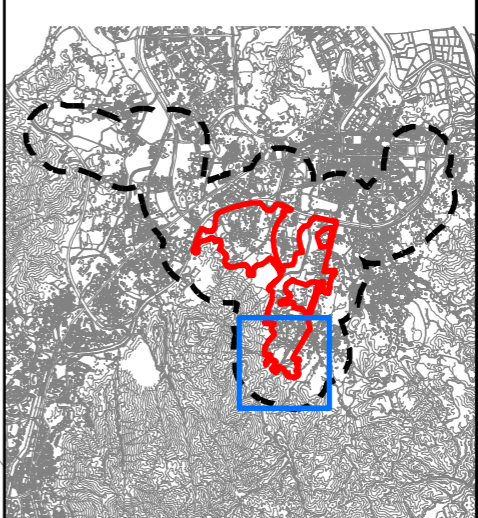
Document Path: Y:\arup-yls\Figures\mxd_file\Habitat map_20170622\Fig8.5c_Species_CI_20170622.mxd



- E : Egretty**
- Butterfly**
- B1 : Pale Palm Dart**
- B2 : Grass Demon**
- B3 : Spotted Angle**
- B4 : Metallic Cerulean**
- B10 : Small Cabbage White**
- B11 : Courtesan**
- Dragonfly**
- D1 : Emerald Cascader**
- D2 : Blue-spotted Dusk-hawker**
- Reptile**
- R2 : Common Rat Snake**
- R4 : Indo-chinese Rat Snake**
- Amphibian**
- A1 : Chinese Bullfrog**
- A2 : Lesser Spiny Frog**
- Stream fauna**
- S1 : *Somaniathelphusa zanklon* (Crab)**
- S2 : *Cryptopotamon anacoluthon* (Crab)**
- S9 : Predaceous chub**
- Flora Species**
- P4 : *Gnetum luofuense***

- PDA Boundary
- 500m Assessment Area
- Yeung Ka Tsuen EIS
- Seasonal Watercourse
- Watercourse
- Channelised Watercourse
- Pond
- Dry Agricultural Land
- Inactive Agricultural Land
- Seasonally Wet Grassland
- Grassland
- Grassland/Shrubland
- Secondary Woodland
- Plantation
- Orchard
- Village Area
- Wasteland
- Developed Area

Rev	Description	By	Date
Consultant			
ARUP			
Contract No. and Title			
Agreement No. CE 35/2012 (CE)			
Planning and Engineering Study for Housing Sites in Yuen Long South - Investigation			
Drawing title			
Species (Non-avifauna Species and Plant Species) of Conservation Importance			
Drawing no.		Rev.	
Figure 8.5c			
Drawn	Date	Checked	Approved
JH	5 Jul 2017	LW	GL
Scale	Status		
1:5,000			



COPYRIGHT RESERVED

土木工程拓展署
Civil Engineering and Development Department

規劃署
Planning Department