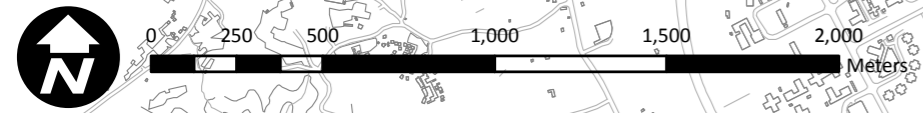
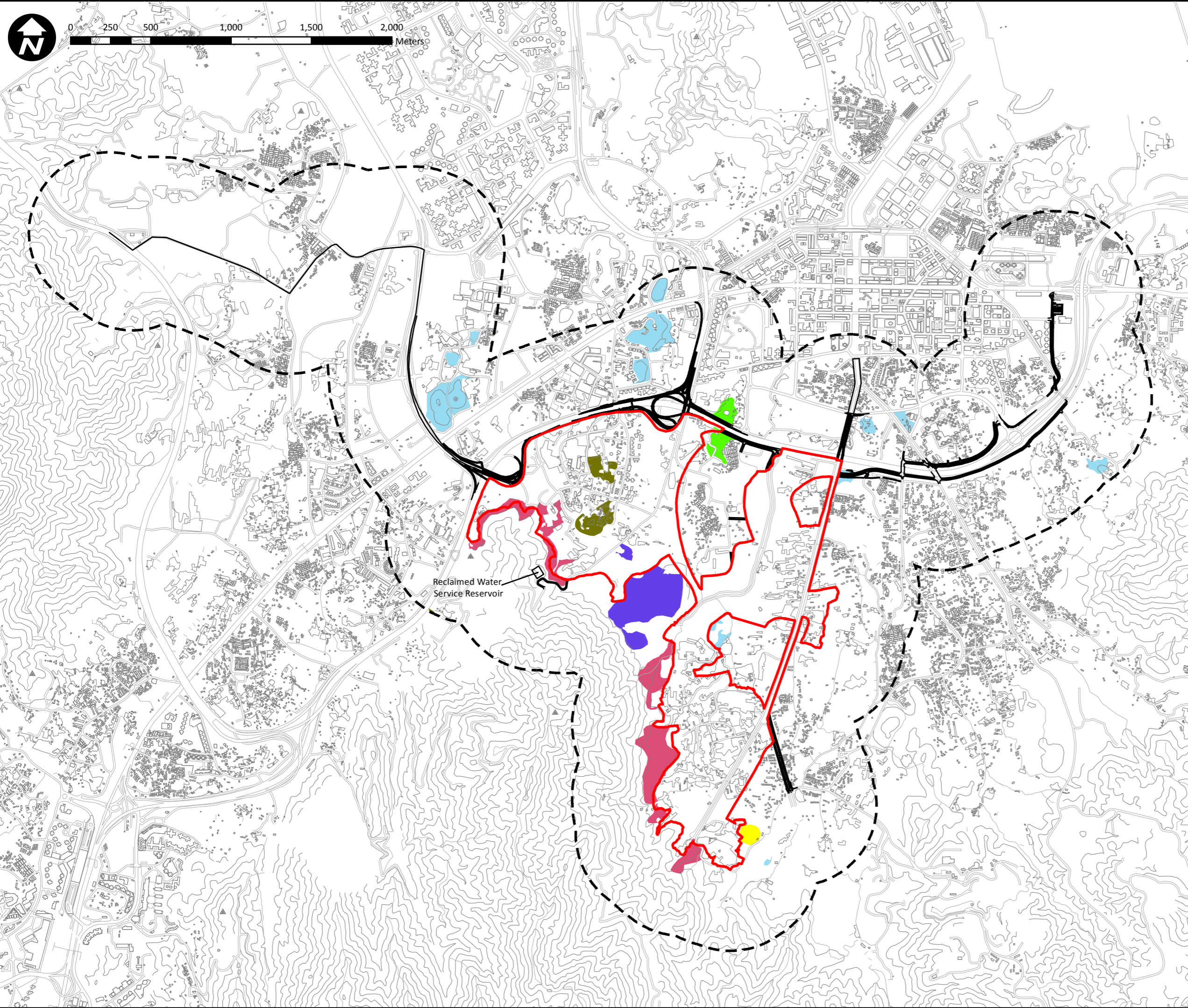


Document Path: Y:\arup-yls\Figures\mxd file\Habitat map\_20170622\Fig8.7 Woodland\_20170622.mxd



- PDA Boundary
- 500m Assessment Area
- Proposed Development Footprint
- Woodland near Lam Hau Tsuen & Lam Hau Wai Tsuen
- Woodland near Shan Ha Tsuen
- Hillside Woodland
- Woodland near Tong Yan San Tsuen
- Woodland under Pylon near Yeung Ka Tsuen
- Other Woodland

Rev	Description	By	Date	
Consultant				
<b>ARUP</b>				
Contract No. and Title				
Agreement No. CE 35/2012 (CE)				
Planning and Engineering Study for Housing Sites in Yuen Long South - Investigation				
Drawing title				
Locations of Secondary Woodlands				
Drawing no.	Figure 8.7			Rev.
Drawn	JH	Date	18 Jul 2017	Checked
Scale	1:22,000		Status	GL
			Approved	GL

COPYRIGHT RESERVED



土木工程拓展署  
Civil Engineering and Development Department



規劃署  
Planning Department