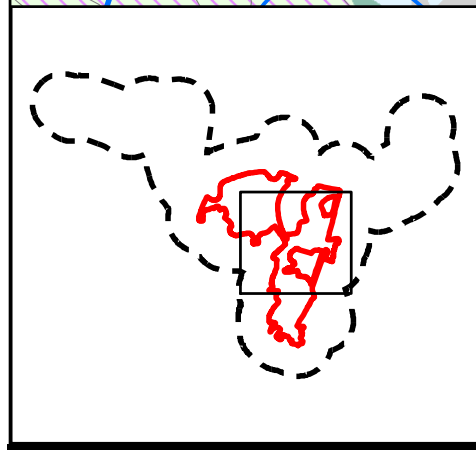


- PDA Boundary
- 500m Assessment Area
- Observation Point
- Flightline in 2014 Survey
- Seasonal Watercourse
- Watercourse
- Channelised Watercourse
- Pond
- Dry Agricultural Land
- Wet Agricultural Land
- Inactive Agricultural Land
- Seasonally Wet Grassland
- Grassland
- Grassland/Shrubland
- Secondary Woodland
- Lychee Woodland
- Orchard
- Nursery
- Village Area
- Wasteland
- Developed Area

Note: Arrows are indicative only and give a general direction of travel. These flight lines do not indicate landing points of foraging habitats.




Flightline in 2014	*Number of bird using the flightline per survey	% of bird using the flightline
1	7.5	13.8
2	2.5	39.6
3	11	20.3
4	5	9.2
5	5.3	9.7
6	4	7.4

Rev	Description	By	Date
Consultant			
ARUP			
Contract No. and Title			
Agreement No. CE 35/2012 (CE)			
Planning and Engineering Study for Housing Sites in Yuen Long South - Investigation			
Drawing title			
Flightline Map in 2014			
Drawing no.	Figure 8.9a		Rev. -
Drawn	JH	Date 22 Jun 2017	Checked GL Approved GL
Scale	1:6,000		Status

COPYRIGHT RESERVED



土木工程拓展署
Civil Engineering and Development Department



規劃署
Planning Department

Document Path: Y:\arup-yls\Figures\mxd_file\Habitat map_20170622\Fig8.9a_flightline_2014survey_20170622.mxd