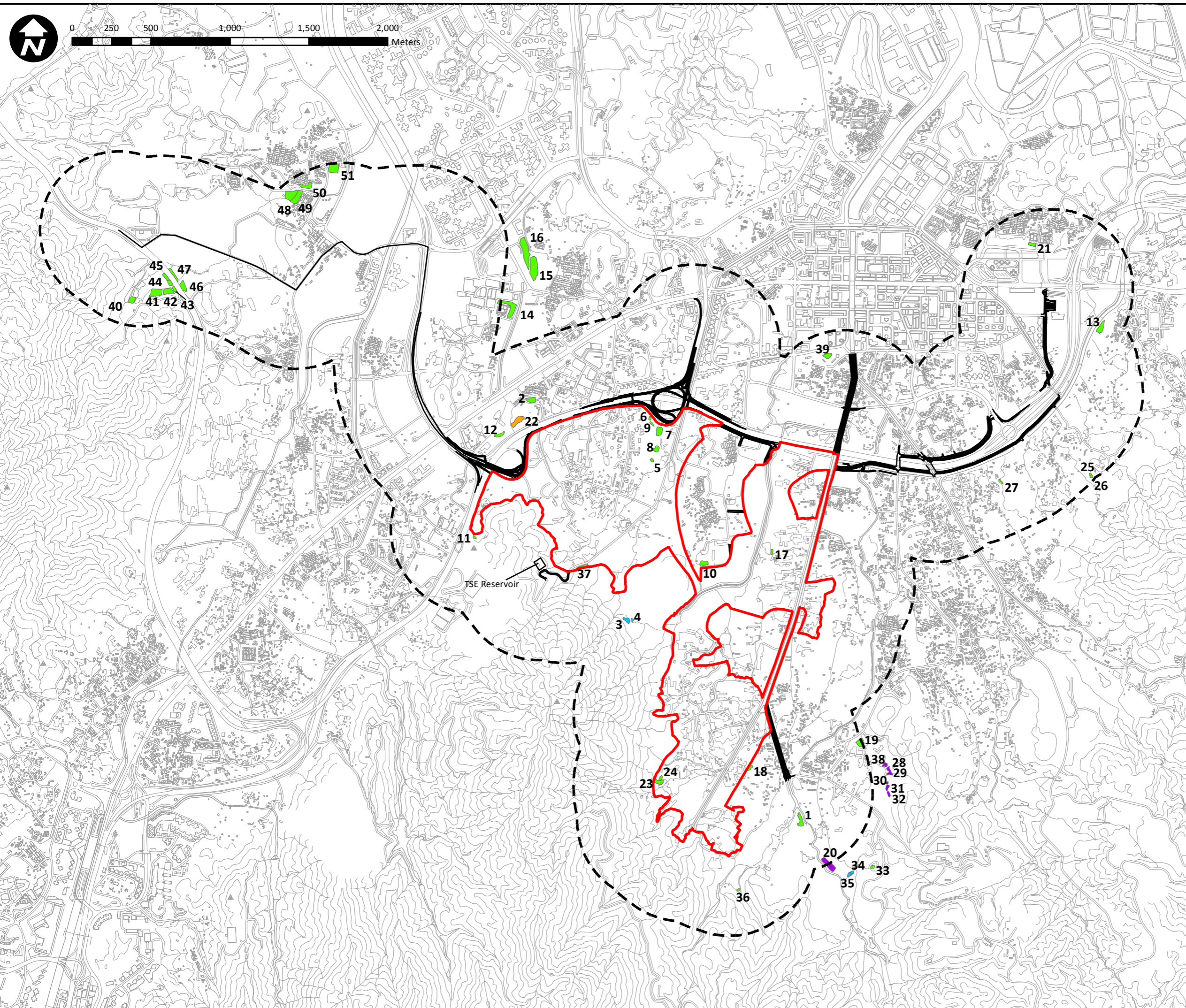


- ▬ PDA Boundary
- 500m Assessment Area
- Proposed Development Footprint
- Active Fish Pond
- Inactive Fish Pond
- Abandoned Fish Pond
- Abandoned and Filled Fish Pond

Document Path: V:\arup-yls\Figures\mxd_file\Habitat map_20170622\Fig9.1_Pond_status_20170619.mxd



Rev	Description	By	Date
Consultant			
ARUP			
Contract No. and Title			
Agreement No. CE 35/2012 (CE)			
Planning and Engineering Study for Housing Sites in Yuen Long South - Investigation			
Drawing title			
Current Status of Fish Ponds			
Drawing no. Figure 9.1			Rev. -
Drawn JH	Date 22 Jun 2017	Checked GL	Approved GL
Scale 1:22,500		Status	

COPYRIGHT RESERVED

土木工程拓展署
Civil Engineering and
Development Department

規劃署
Planning
Department