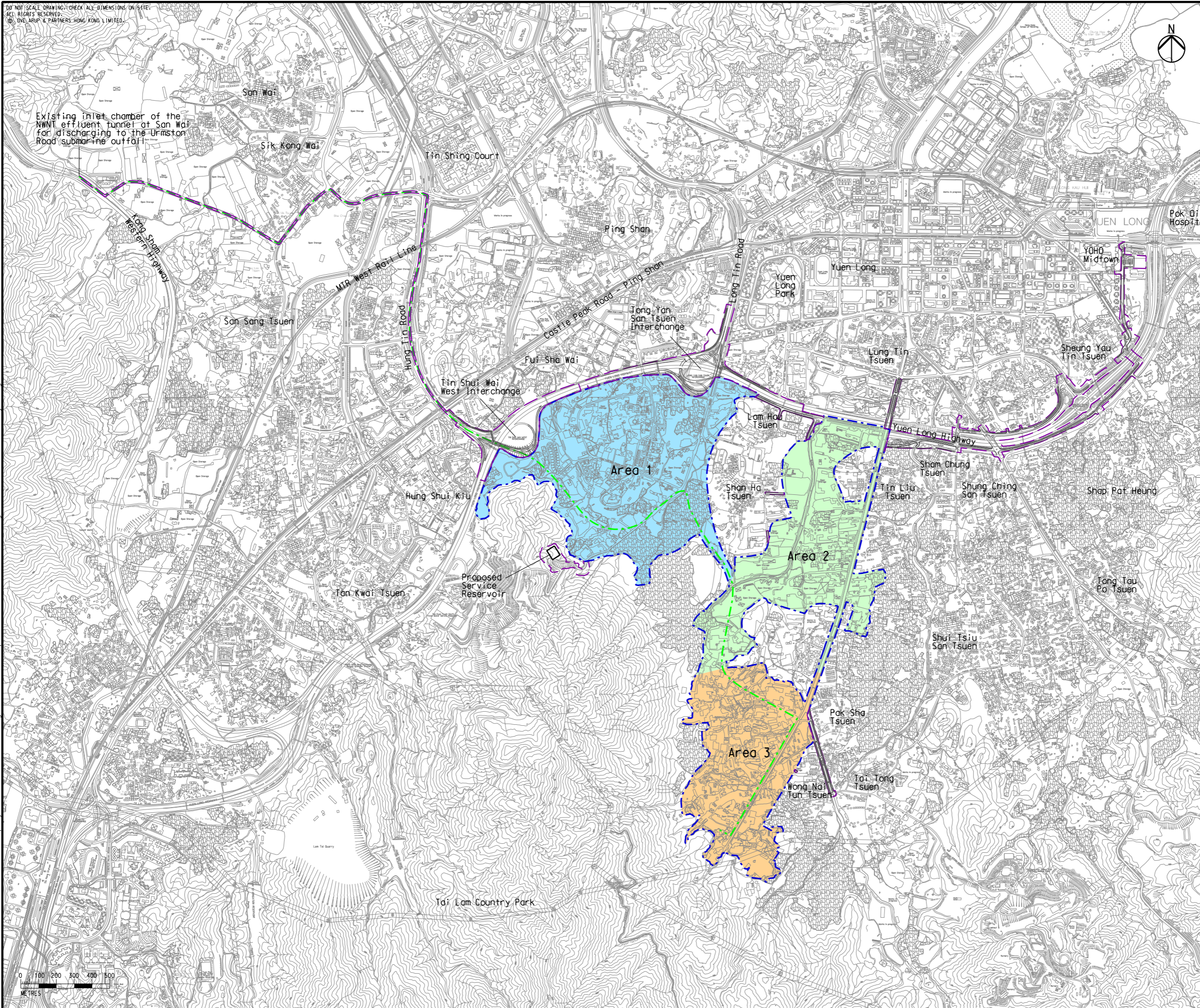


DO NOT SCALE DRAWING. CHECK ALL DIMENSIONS ON SITE.  
ALL RIGHTS RESERVED.  
© 2017 ARUP & PARTNERS HONG KONG LIMITED.

Existing inlet chamber of the  
NWNT effluent tunnel at San Wai  
for discharging to the Urmston  
Road submarine outfall



- Legend**
- Potential Development Area (PDA)
  - Works Boundary Outside PDA
  - New Sewer from YLS STW to the Existing Inlet Chamber of the NWNT Effluent Tunnel at San Wai for Discharging to the Urmston Road Submarine Outfall
  - Area 1
  - Area 2
  - Area 3



Rev	Description	By	Date
B	SECOND ISSUE	GL	07/17
A	FIRST ISSUE	GL	05/17


Consultant  
**ARUP**

Contract No. and Title  
Agreement No. CE 35/2012(CE)  
Planning and Engineering Study for  
Housing Sites in Yuen Long South  
- Investigation


Drawing title  
Location of Project

Drawing no. <b>Figure 1.1</b>		Rev. <b>B</b>	
Drawn GL	Date 07/17	Checked FC	Approved FC
Scale 1:20000 @A3		Status PRELIMINARY	

COPYRIGHT RESERVED



土木工程拓展署  
Civil Engineering and  
Development Department



規劃署  
Planning  
Department

Printed by : 7/22/2017  
Filename : \\HKGNTS22\acoustic\env\project\228228\13 Drawing Deliverables\Report\EM&A Manual\03 Final Figure 1.1 - Location of Project.dgn

