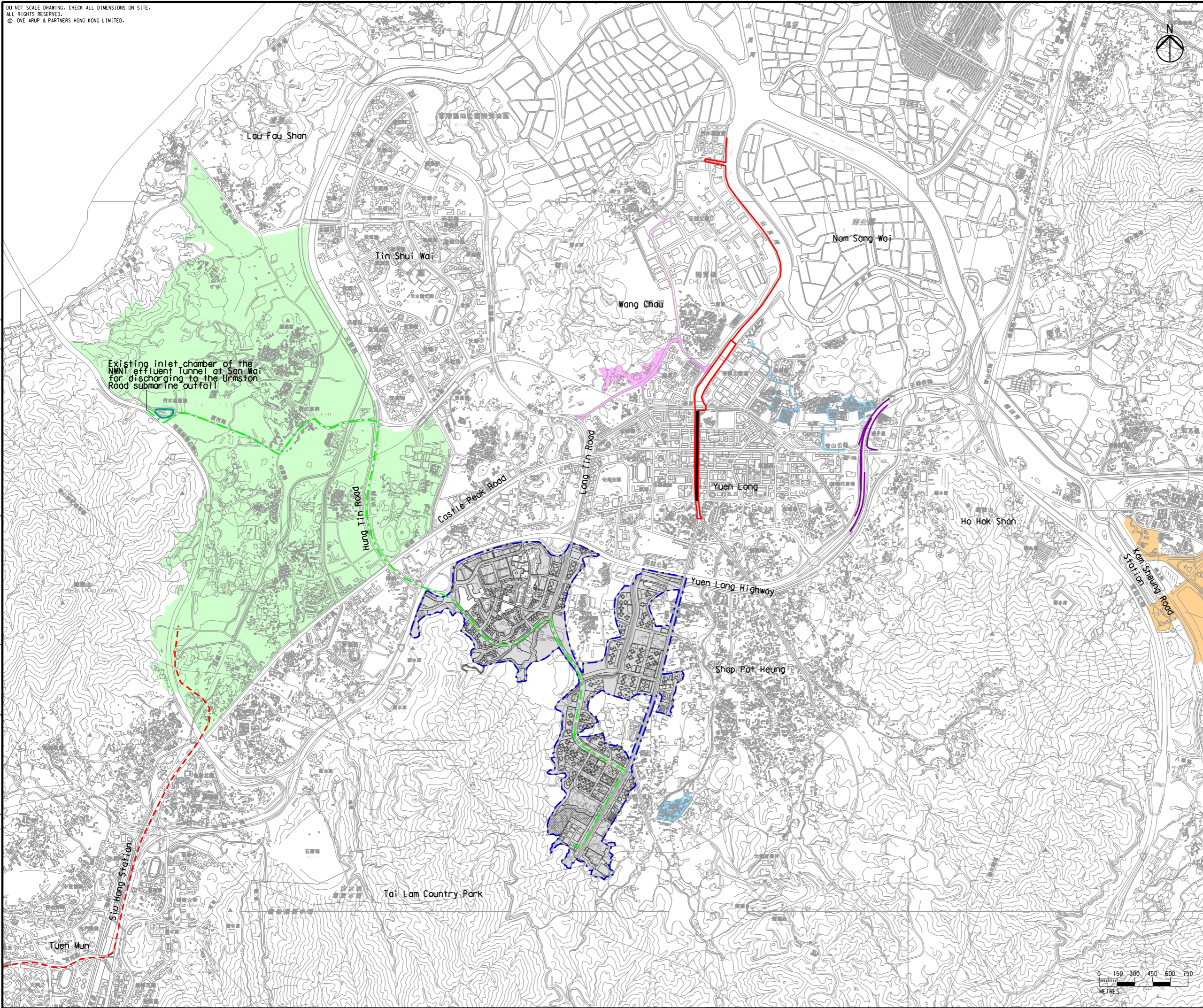


DO NOT SCALE DRAWING. CHECK ALL DIMENSIONS ON SITE.
ALL RIGHTS RESERVED.
© OVE ARUP & PARTNERS HONG KONG LIMITED.

Printed by : 7/22/2017
Filename : \\HKGN\GIS22\acoustic\env\project\228228\13 Drawing Deliverables\Report\EM&A Manual\03 Final Figure 2.3 - Locations of Concurrent Projects.dgn



Legend

- - - Potential Development Area (PDA)
- - - New Sewer from YLS STW to the Existing Inlet Chamber of the NWNT Effluent Tunnel at San Wai for Discharging to the Urmston Road Submarine Outfall
- Hung Shui Kiu New Development Area (HSK NDA) Planning and Engineering Study
- Engineering Works at Lin Cheung Road Site, Sham Shui Po and Wang Chau, Yung Long - Investigation, Design and Construction
- Yuen Long and Kam Tin Sewerage Stage 3 Package 2
- Elevated Pedestrian Corridor in Yuen Long Town Connecting with Long Ping Station - Investigation, Design and Construction
- Land Use Review for Kam Tin South (Property Development of Kam Shue Road Station and Pat Heung Maintenance Centre and its Adjoining Areas)
- - - Improvement to Pok Oi Interchange
- - - Yuen Long and Kam Tin Sewerage Treatment Upgrade - Upgrading of San Wai Sewerage Treatment Works
- - - Improvement of Yuen Long Town Nullah (Town Centre Section) - Stage 1 and Stage 2
- - - Tuen Mun Western Bypass

B	SECOND ISSUE	GL	07/17
A	FIRST ISSUE	GL	05/17
Rev	Description	By	Date


Consultant
ARUP

Contract No. and Title
Agreement No. CE 35/2012(CE)
Planning and Engineering Study for Housing Sites in Yuen Long South - Investigation


Drawing title
Locations of Concurrent Projects

Drawing no. Figure 2.3		Rev. B	
Drawn GL	Date 07/17	Checked FC	Approved FC
Scale 1:30000 @A3		Status PRELIMINARY	

COPYRIGHT RESERVED



土木工程拓展署
Civil Engineering and
Development Department



規劃署
Planning
Department

