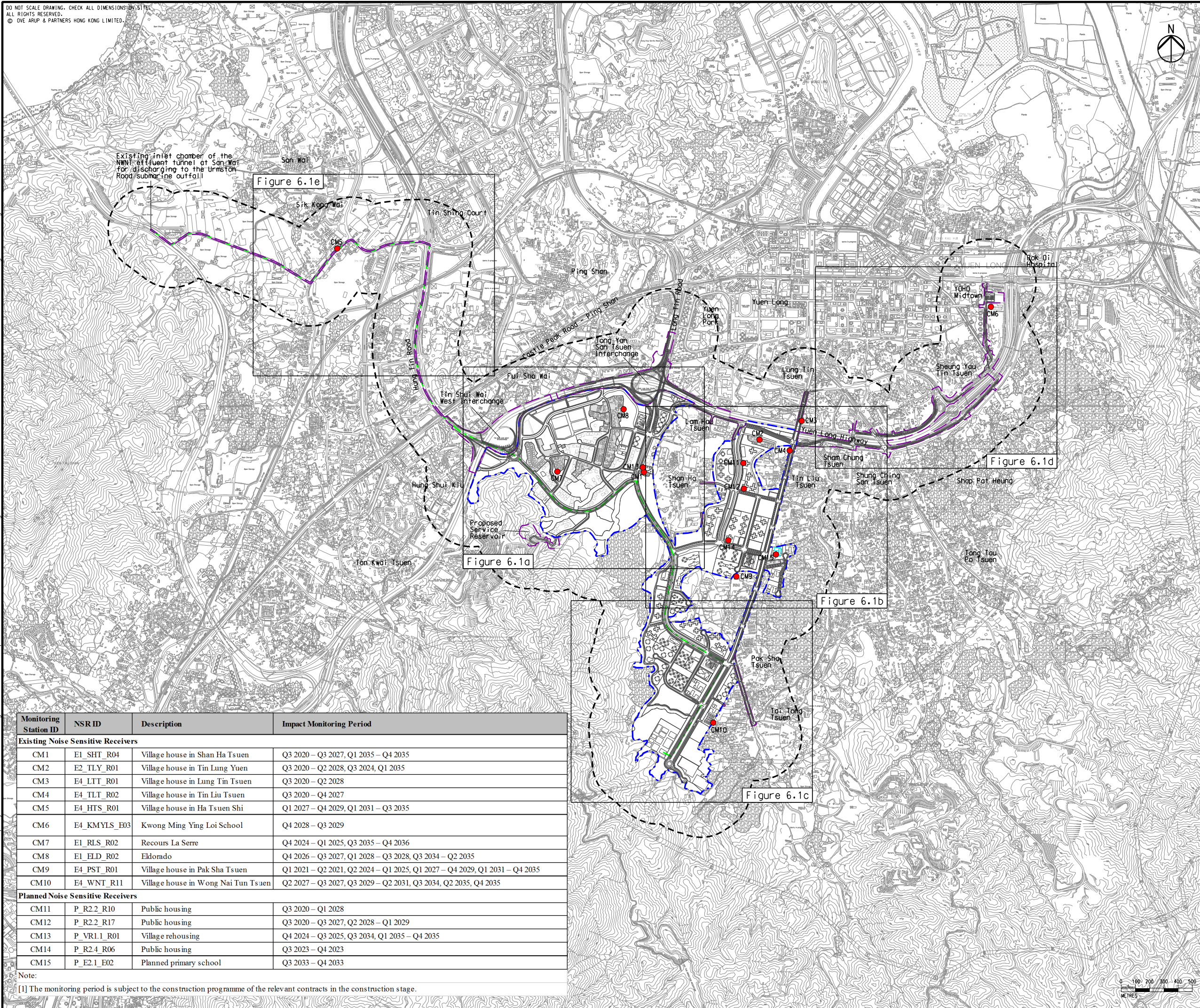


DO NOT SCALE DRAWING. CHECK ALL DIMENSIONS ON SITE.
ALL RIGHTS RESERVED.
© OVE ARUP & PARTNERS HONG KONG LIMITED.



- Legend**
- Potential Development Area (PDA)
 - Works Boundary Outside PDA
 - New Sewer from YLS STW to the Existing Inlet Chamber of the NWT Effluent Tunnel at San Wai for Discharging to the Urmston Road Submarine Outfall
 - 300m Assessment Area
 - R5 (Existing Development Area within PDA)
 - Construction Airborne Noise Monitoring Station
 - Alternative Building Orientation



Monitoring Station ID	NSR ID	Description	Impact Monitoring Period
Existing Noise Sensitive Receivers			
CM1	E1_SHT_R04	Village house in Shan Ha Tsuen	Q3 2020 – Q3 2027, Q1 2035 – Q4 2035
CM2	E2_TLY_R01	Village house in Tin Lung Yuen	Q3 2020 – Q2 2028, Q3 2024, Q1 2035
CM3	E4_LTT_R01	Village house in Lung Tin Tsuen	Q3 2020 – Q2 2028
CM4	E4_TLT_R02	Village house in Tin Liu Tsuen	Q3 2020 – Q4 2027
CM5	E4_HTS_R01	Village house in Ha Tsuen Shi	Q1 2027 – Q4 2029, Q1 2031 – Q3 2035
CM6	E4_KMYLS_E03	Kwong Ming Ying Loi School	Q4 2028 – Q3 2029
CM7	E1_RLS_R02	Recours La Serre	Q4 2024 – Q1 2025, Q3 2035 – Q4 2036
CM8	E1_ED_R02	Eldorado	Q4 2026 – Q3 2027, Q1 2028 – Q3 2028, Q3 2034 – Q2 2035
CM9	E4_PST_R01	Village house in Pak Sha Tsuen	Q1 2021 – Q2 2021, Q2 2024 – Q1 2025, Q1 2027 – Q4 2029, Q1 2031 – Q4 2035
CM10	E4_WNT_R11	Village house in Wong Nai Tun Tsuen	Q2 2027 – Q3 2027, Q3 2029 – Q2 2031, Q3 2034, Q2 2035, Q4 2035
Planned Noise Sensitive Receivers			
CM11	P_R2.2_R10	Public housing	Q3 2020 – Q1 2028
CM12	P_R2.2_R17	Public housing	Q3 2020 – Q3 2027, Q2 2028 – Q1 2029
CM13	P_VR1.1_R01	Village rehousing	Q4 2024 – Q3 2025, Q3 2034, Q1 2035 – Q4 2035
CM14	P_R2.4_R06	Public housing	Q3 2023 – Q4 2023
CM15	P_E2.1_E02	Planned primary school	Q3 2033 – Q4 2033

Note:
[1] The monitoring period is subject to the construction programme of the relevant contracts in the construction stage.

Rev	Description	By	Date
B	SECOND ISSUE	GL	07/17
A	FIRST ISSUE	GL	05/17


Consultant
ARUP

Contract No. and Title
Agreement No. CE 35/2012(CE)
Planning and Engineering Study for Housing Sites in Yuen Long South - Investigation


Drawing title
Locations of Construction Noise Monitoring Stations (Sheet 1 of 6)

Drawing no. Figure 6.1		Rev. B	
Drawn GL	Date 07/17	Checked FC	Approved FC
Scale 1:25000 ON A3		Status PRELIMINARY	

COPYRIGHT RESERVED



土木工程拓展署
Civil Engineering and Development Department



規劃署
Planning Department

Printed by : 7/26/2017
Filename : \\HKGNTS22\acoustic\env\project\228228\13 Drawing Deliverables\Report\EM&A Manual\03 Final Figure 6.1 - Locations of Construction Airborne Noise Monitoring Station.dgn