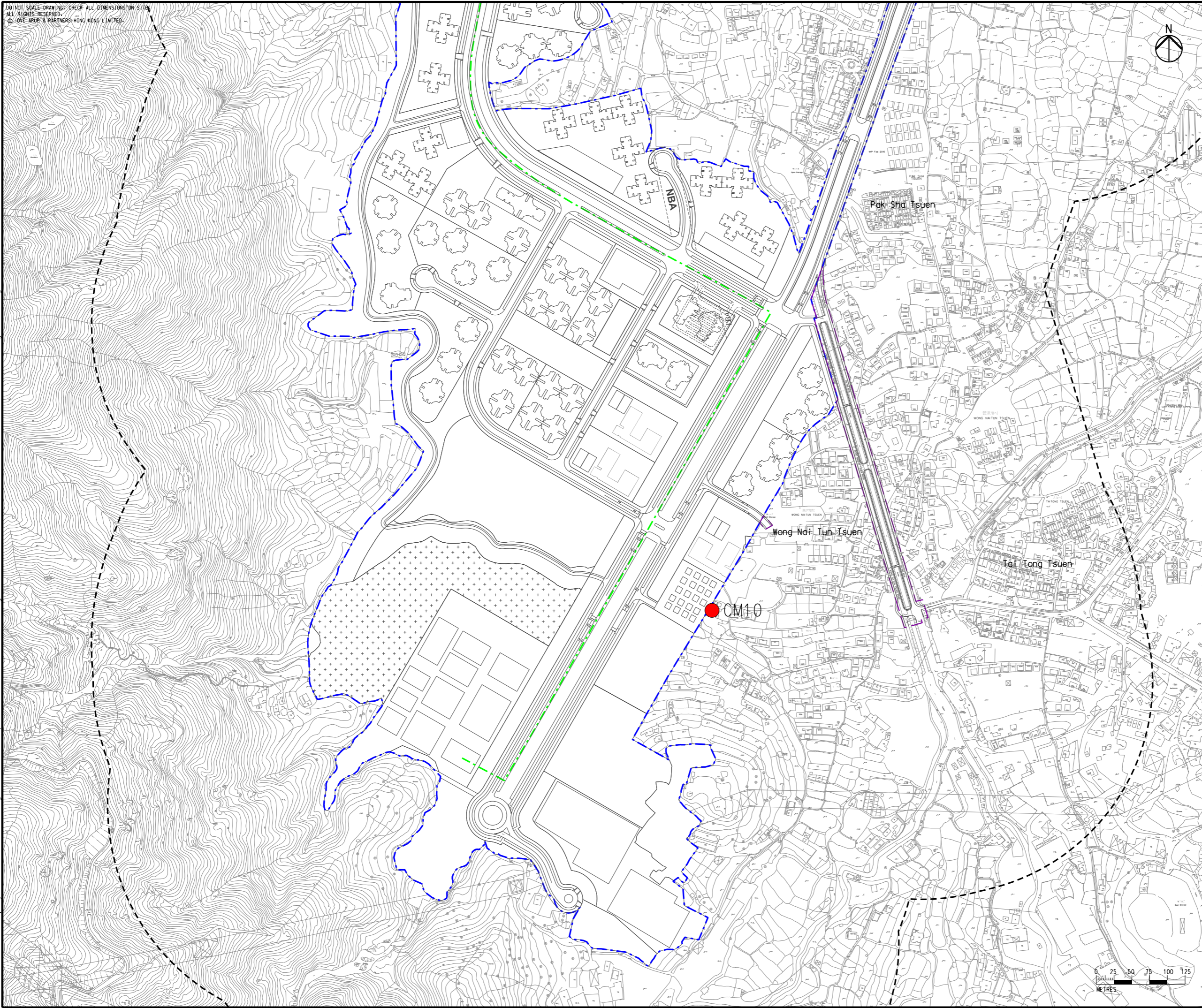


DO NOT SCALE DRAWING. CHECK ALL DIMENSIONS ON SITE.  
ALL RIGHTS RESERVED.  
© OVE ARUP & PARTNERS HONG KONG LIMITED.

Printed by : 7/25/2017  
Filename : G:\env\project\228228\13 Drawing Deliverables\Report\EM&A Manual\03 Final\Figure 6.1c - Locations of Construction Airborne Noise Monitoring Station.dgn



- Legend
- - - Potential Development Area (PDA)
  - - - Works Boundary Outside PDA
  - - - New Sewer from YLS STW to the Existing Inlet Chamber of the NWNT Effluent Tunnel at San Wai for Discharging to the Urmston Road Submarine Outfall
  - 300m Assessment Area
  - R5 (Existing Development Area within PDA)
  - Construction Airborne Noise Monitoring Station

Rev	Description	By	Date
B	SECOND ISSUE	GL	07/17
A	FIRST ISSUE	GL	05/17


Consultant  
**ARUP**

Contract No. and Title  
Agreement No. CE 35/2012(CE)  
Planning and Engineering Study for Housing Sites in Yuen Long South - Investigation


Drawing title  
Locations of Construction Noise Monitoring Stations  
(Sheet 4 of 6)

Drawing no. <b>Figure 6.1c</b>		Rev. <b>B</b>	
Drawn GL	Date 07/17	Checked FC	Approved FC
Scale 1:5000 @A3		Status PRELIMINARY	

COPYRIGHT RESERVED



土木工程拓展署  
Civil Engineering and  
Development Department



規劃署  
Planning  
Department

