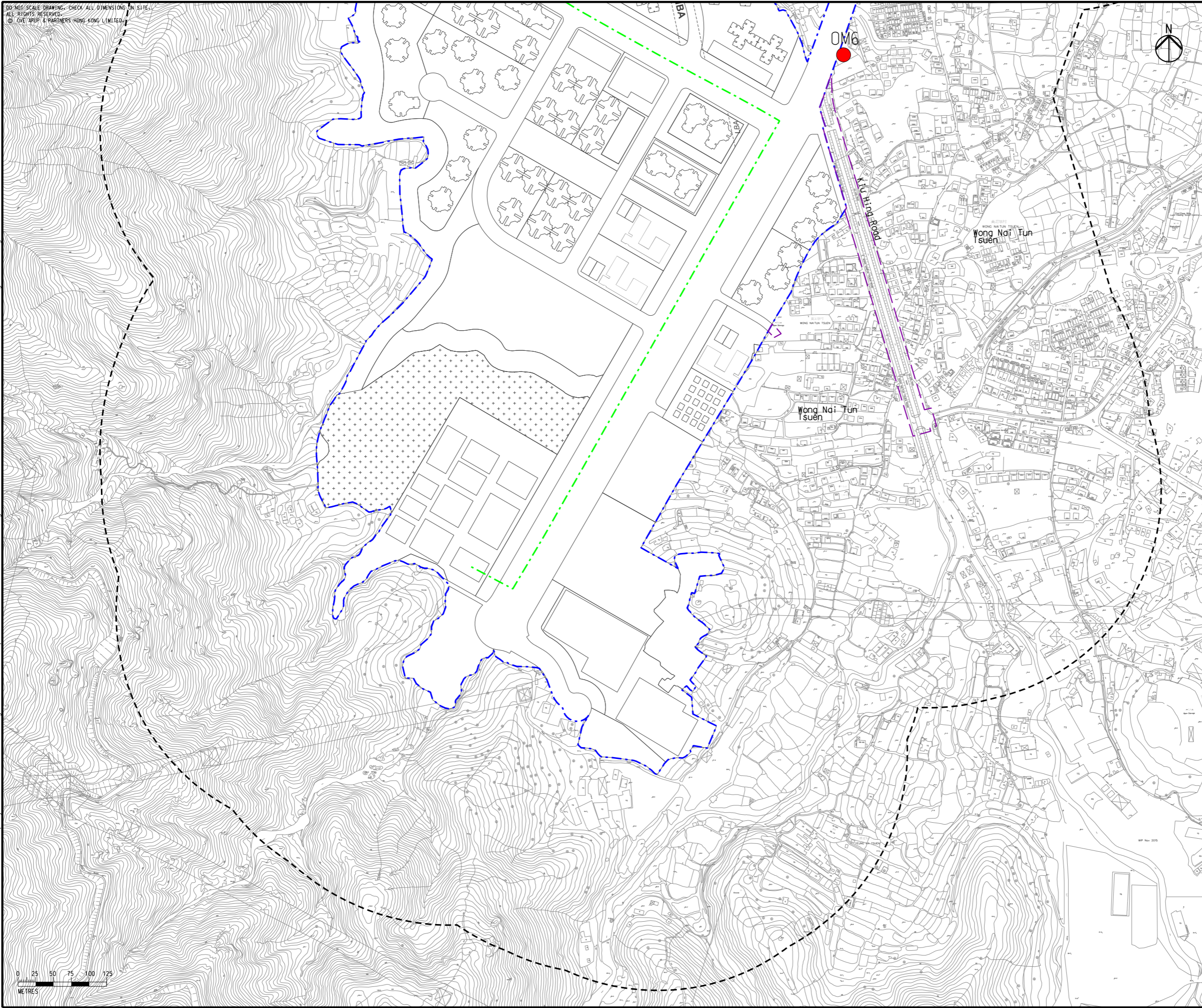
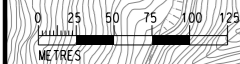


DO NOT SCALE DRAWING. CHECK ALL DIMENSIONS ON SITE.
 ALL RIGHTS RESERVED.
 © LOVE/ARUP & PARTNERS HONG KONG LIMITED

Printed by : 7/22/2017
 Filename : \\HKGNTS22\acoustic\env\project\228228\13 Drawing Deliverables\Report\EM&A Manual\03 Final Figure 6.2d - Locations of Road Traffic Noise Monitoring Station.dgn



Legend

- Potential Development Area (PDA)
- Works Boundary Outside PDA
- New Sewer from YLS STW to the Existing Inlet Chamber of the NWNT Effluent Tunnel at San Wai for Discharging to the Urmston Road Submarine Outfall
- 300m Assessment Area
- R5 (Existing Development Area within PDA)
- Road Traffic Noise Monitoring Station

Rev	Description	By	Date
B	THIRD ISSUE	GL	07/17
A	FIRST ISSUE	GL	05/17

Consultant
ARUP

Contract No. and Title
 Agreement No. CE 35/2012(CE)
 Planning and Engineering Study for Housing Sites in Yuen Long South - Investigation

Drawing title
 Locations of Road Traffic Noise Monitoring Stations (Sheet 5 of 6)

Drawing no. Figure 6.2d		Rev. B	
Drawn GL	Date 07/17	Checked FC	Approved FC
Scale 1:5000 @A3		Status PRELIMINARY	

COPYRIGHT RESERVED

土木工程拓展署
Civil Engineering and Development Department

規劃署
Planning Department