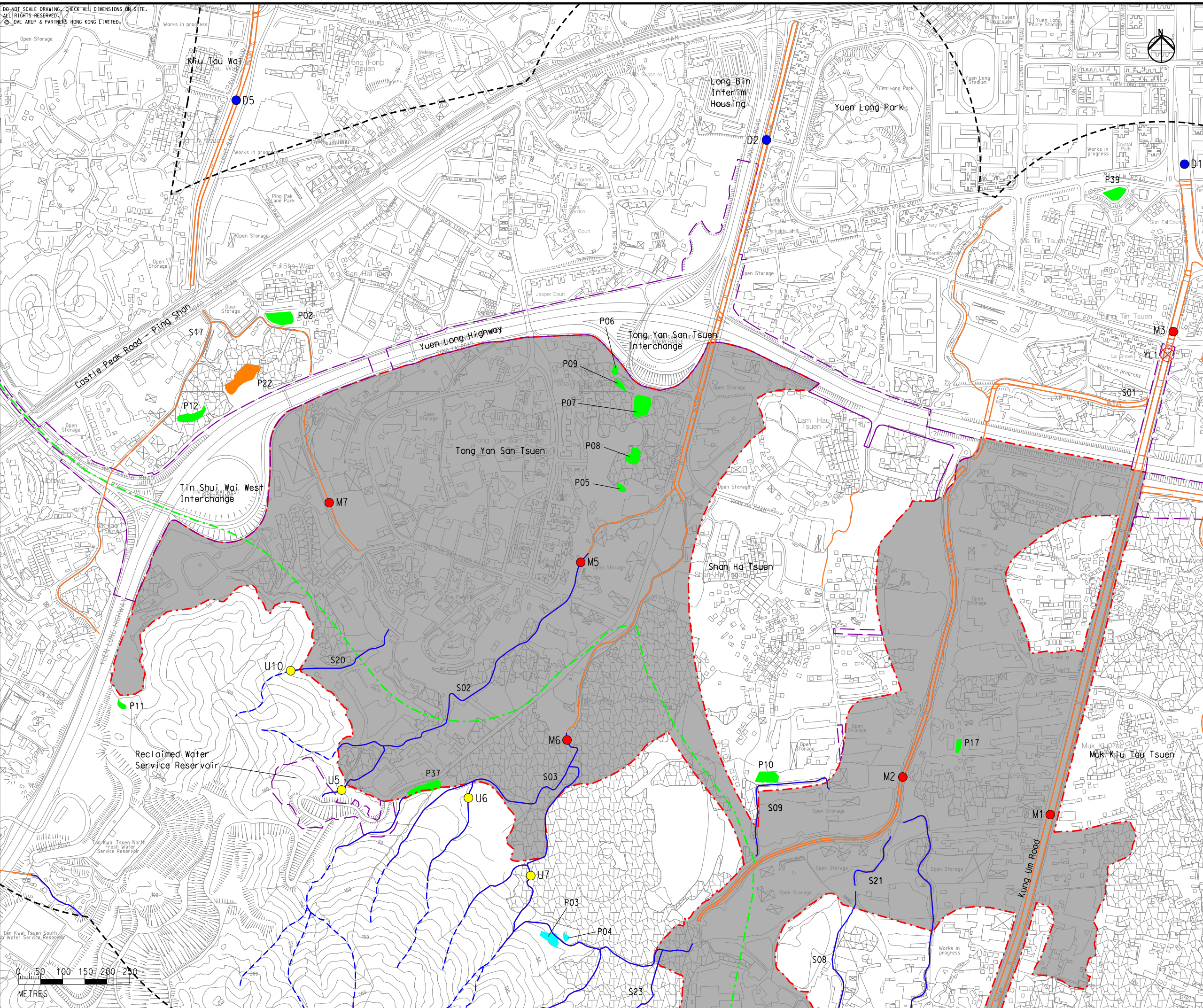


Printed by : 7/22/2017  
 File name : \\HKGN\GIS22\acoustic\env\project\228228\13 Drawing Deliverables\Report\EM&A Manual\03 Final Figure 7.1a - Locations of Water Quality Sensitive Receivers.dgn



- Legend**
- Potential Development Area (PDA)
  - Works Boundary Outside PDA
  - New Sewer from YLS STW to the Existing Inlet Chamber of the NWT Effluent Tunnel at San Wai for Discharging to the Urmston Road Submarine Outfall
  - 500m Assessment Area
  - Reedbed
  - Natural Watercourse
  - Seasonally Watercourse
  - Channelised Watercourse
  - Yuen Ka Tsuen EIS
  - Active Fish Pond
  - Inactive Fish Pond
  - Abandoned Fish Pond
  - EPD Water Monitoring Station
  - U1 Proposed Upstream Water Quality Monitoring Station
  - M1 Proposed Gradient Water Quality Monitoring Station
  - D1 Proposed Impact Water Quality Monitoring Station
  - EIS-1 Proposed EIS Water Quality Monitoring Station

B	SECOND ISSUE	GL	07/17
A	FIRST ISSUE	GL	05/17
Rev	Description	By	Date

Consultant  
**ARUP**

Contract No. and Title  
 Agreement No. CE 35/2012(CE)  
 Planning and Engineering Study for Housing Sites in Yuen Long South - Investigation

Drawing title  
**Locations of Water Quality Sensitive Receivers (Sheet 2 of 5)**

Drawing no. <b>Figure 7.1a</b>		Rev. <b>B</b>	
Drawn GL	Date 07/17	Checked FC	Approved FC
Scale AS SHOWN	Status PRELIMINARY	COPYRIGHT RESERVED	



土木工程拓展署  
Civil Engineering and Development Department



規劃署  
Planning Department