



40/F, Revenue Tower, 5 Gloucester Road, Wan Chai, Hong Kong
香港灣仔告士打道 5 號稅務大樓 40 樓

ACE Paper 14/2007

For advice

Report of the Environmental Impact Assessment Subcommittee

INTRODUCTION

The Environmental Impact Assessment (EIA) Subcommittee considered the EIA report on Drainage Improvement in Northern New Territories – Package C (ACE-EIA Paper 4/2007 refers) by circulation. All Members of the Subcommittee agreed that the EIA report could be considered by the Subcommittee without a presentation by the project proponent and could be endorsed without condition.

2. The public inspection period of the EIA report is from 3 May to 1 June 2007. Three sets of public comments were received by the Environmental Protection Department during the period which have been referred to Members for reference.

ADVICE SOUGHT

3. Members are requested to advise whether the EIA report on Drainage Improvement in Northern New Territories – Package C could be endorsed without condition.

NEED FOR THE PROJECT

4. The project is to alleviate recurring flooding problems in Man Uk Pin and Lin Ma Hang areas by improving the secondary and local stormwater drainage systems in accordance with the recommendation of the Drainage Master Plan Study in the Northern New Territories.

DESCRIPTION OF THE PROJECT

5. The project involves the construction of secondary and local drainage channels at Man Uk Pin in the Indus Basin and improvement works to the Lin Ma Hang stream in the Ganges Basin. The location of the project is shown in **Figure 1** and the general

arrangement of the drainage channels at Man Uk Pin and Lin Ma Hang is shown in **Figures 2, 3 and 4**. Major works of the project include –

Man Uk Pin Area

- (i) a two-stage channel of about 550 m long with existing natural river bed, gabion walls and/or mattress lining (MUP05);
- (ii) trapezoidal channels of about 670 m long with gabion walls and mattress lining (MUP03, MUP04A, MUP05);
- (iii) 210 m long U-channels, 170 m long underground drainage pipes and 80 m long box culverts (MUP03, MUP04, MUP05); and
- (iv) other ancillary works include re-provision of crossings, provision of inlet/outlet pipes, maintenance ramps & accesses and final landscaping works.

Lin Ma Hang Area

- (i) construction of about 190 m gabion wall channel and localized river bank improvement works at Lin Ma Hang stream (LMH01); and
- (ii) other ancillary works include re-provision of crossings, provision of flood alarm and flood siren, improvement on outlet security grille and final landscaping works.

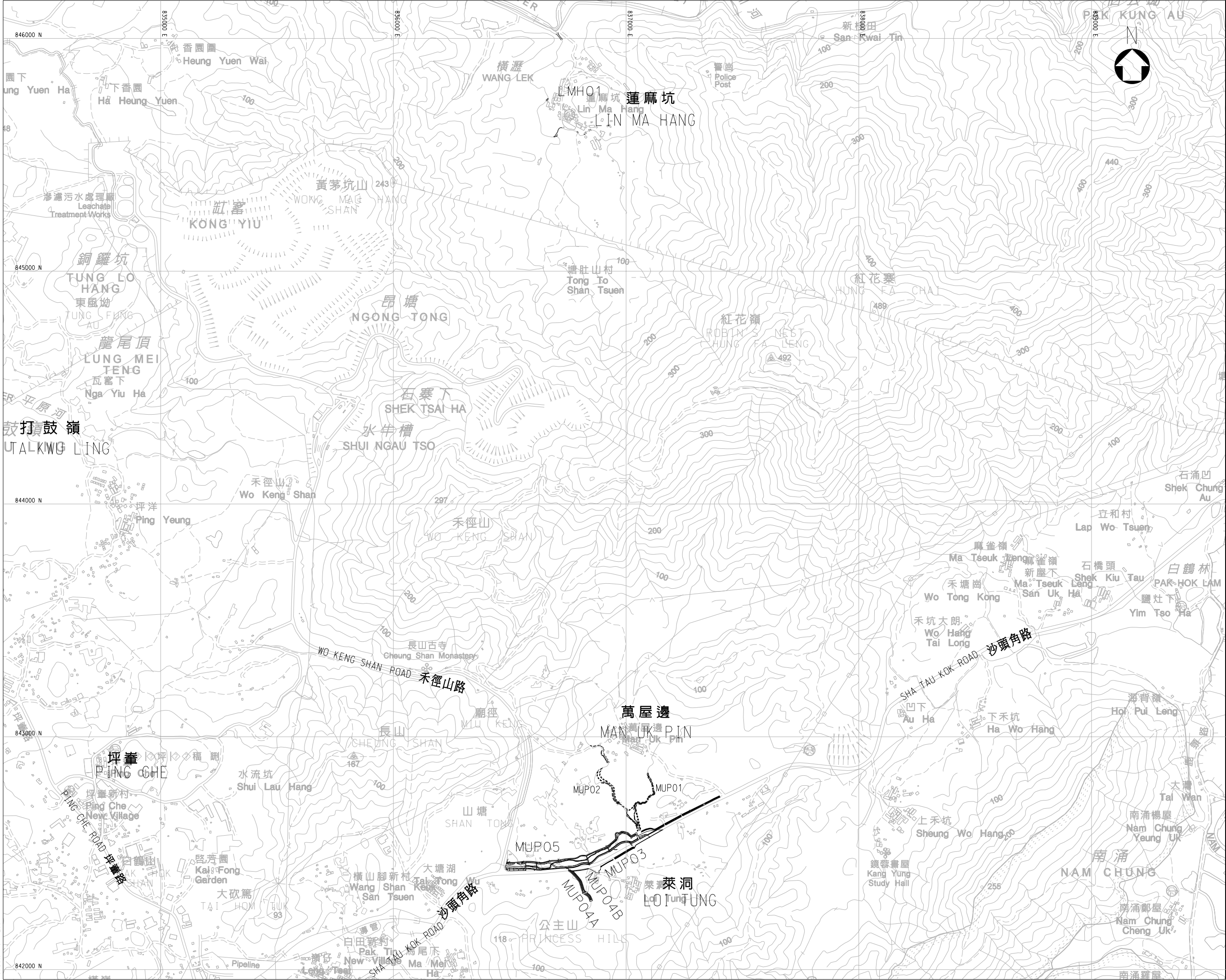
6. The project is classified as a designated project under Item I.1(b)(i) and (vii), Part I, Schedule 2 of the EIA Ordinance, i.e. “a drainage channel or river training and diversion works which discharges or discharge into area which is less than 300 m from the nearest boundary of an existing or planned site of special scientific interest and conservation area”.

VIEWS AND CONCLUSION OF THE SUBCOMMITTEE

7. Having regard to the findings and recommendations of the EIA report, Members agreed by circulation that the EIA report could be endorsed without condition. The Subcommittee endorsed Members’ views and agreed to recommend the EIA report to the full Council for endorsement without condition.

EIA Subcommittee Secretariat

June 2007



Copyright by Black & Veatch Hong Kong Limited

圖例
LEGEND:

指定工程項目
DESIGNATED PROJECT
(MUP03, MUP04A, MUP04B, MUP05, LMH01)

非指定工程項目
NON-DESIGNATED PROJECT
(MUP01, MUP02)

Revision	Date	Description	Initial
	Designed	Checked	Drawn
Initial	CMY/JK	DWM	PJL
Date	01/04	01/04	01/04
Approved			

協議編號
Agreement no.

CE 6/2002 (DS)

工程項目名稱
Contract title

新界北部雨水排放系統改善計劃 - C部分
研究,設計及建造
DRAINAGE IMPROVEMENT IN
NORTHERN NEW TERRITORIES -
PACKAGE C
INVESTIGATION, DESIGN AND CONSTRUCTION

圖則名稱
Figure title

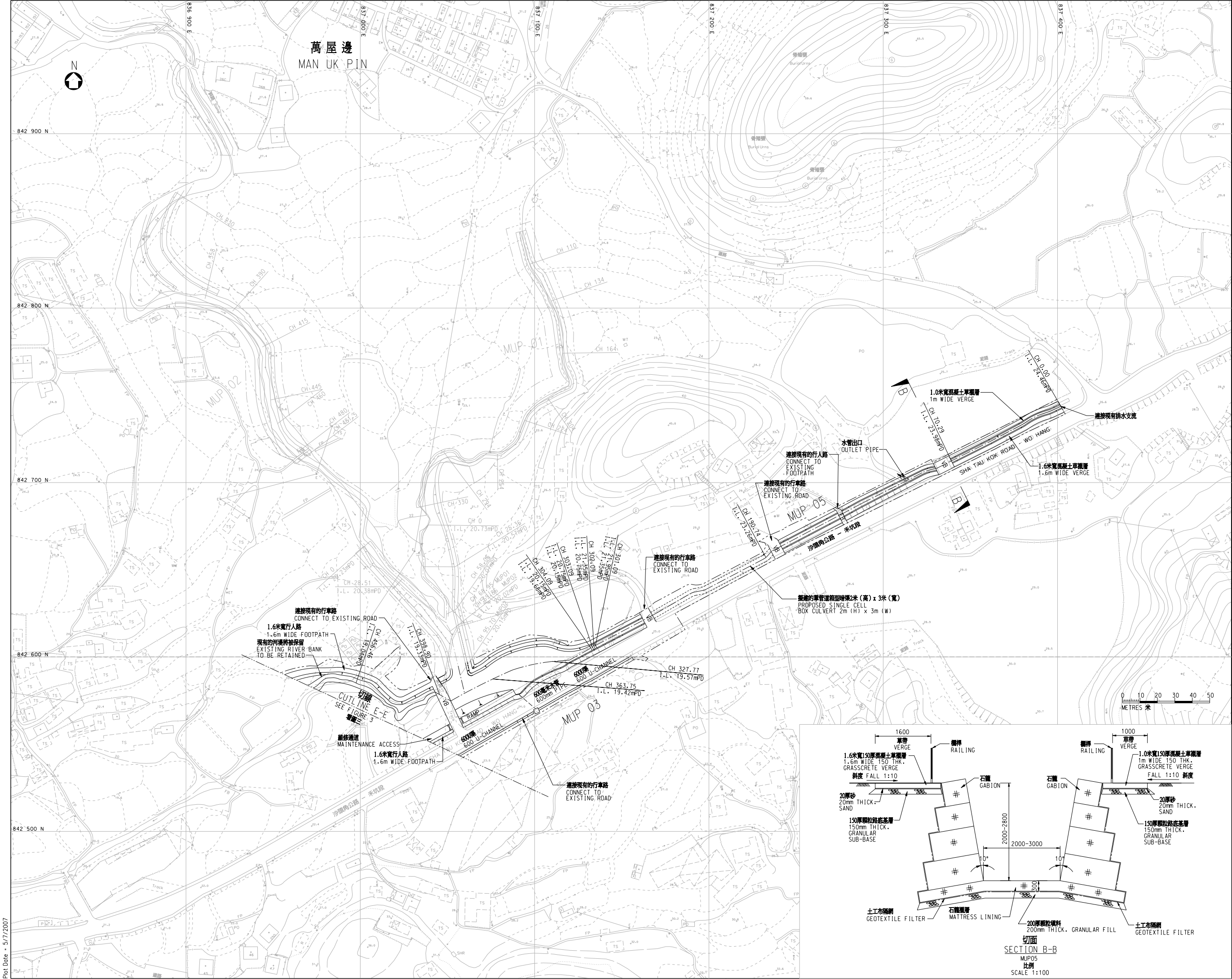
擬建 (指定工程項目) 雨水渠道位置圖
LOCATION PLAN OF
PROPOSED (DESIGNATED PROJECT)
DRAINAGE CHANNELS

圖則編號	比例
Figure no.	Scale
1	A3 1:15000

香港特別行政區政府渠務署
THE GOVERNMENT OF THE
HONG KONG
SPECIAL ADMINISTRATIVE REGION
DRAINAGE SERVICES DEPARTMENT

BLACK & VEATCH HONG KONG LIMITED
博威工程顧問有限公司

Plot Date : 5/7/2007



© Copyright by Black & Veatch Hong Kong Limited

注 NOTES:

- 除特別說明外,全部丈量長度以米為單位。
ALL CHAINAGES ARE IN METRES UNLESS OTHERWISE INDICATED.
- 所有水平以米為單位,並在香港主水平基準上。
ALL LEVELS ARE IN METRES ABOVE PRINCIPAL DATUM (mPD).
- 除特別說明外,全部尺寸以毫米為單位。
ALL DIMENSIONS ARE IN MILLIMETRES UNLESS OTHERWISE STATED.
- 顯示的渠寬是沿著渠道的平均寬度。
THE CHANNEL WIDTH SHOWN IS THE AVERAGE ALONG THE CHANNEL.

圖例 LEGEND:

—	中心線 CENTER LINE
——	擬建渠道 PROPOSED CHANNEL
- - - -	地段界線 SITE BOUNDARY
CH	丈量長度 CHAINAGE
I.L.	擬建河床水平 PROPOSED INVERT LEVEL
⋈	消防專用欄 CRASH GATE
FB	行人橋將會被重建 FOOTBRIDGE TO BE REPROVIDED
VB	行車橋將會被重建 VEHICULAR BRIDGE TO BE REPROVIDED
▢	石籠河堤/堤坡 GABION BANKS/LANDSCAPED EMBANKMENT SLOPES
□	集水井 CATCHPIT

I	10/06	CHANNEL DESIGN REVISED DUE TO OBJECTIONS	FP
H	06/06	INVERT LEVELS REVISED	CHH
G	03/06	CHANNEL AND BOUNDARY REVISED	CHH
F	11/05	CHANNEL AND BOUNDARY REVISED	CHH
E	09/05	CHANNEL UPDATED	CHH
D	08/05	CHANNEL DESIGN AND BOUNDARY REVISED	CHH
C	06/05	CHANNEL AND BOUNDARY UPDATED	CHH
B	09/04	FOOTPATH & VERGE UPDATED	HMC
A	08/04	ISSUE FOR PRELIMINARY REPORT	HMC
Revision	Date	Description	Initial
	Designed	Checked	Drawn
Initial	ZL	MC	LHS
Date	12/06	12/06	12/06
Approved			

協議編號
Agreement no. CE 6/2002 (DS)

工程項目名稱
Contract title
新界北部雨水排放系統改善計劃 - C部分
研究,設計及建造
DRAINAGE IMPROVEMENT IN NORTHERN NEW TERRITORIES - PACKAGE C
INVESTIGATION, DESIGN AND CONSTRUCTION

圖則名稱
Figure title
萬屋邊地區擬建渠道的規劃設計圖 (MUP03,04A,04B&05)
(2張之第1張)
GENERAL ARRANGEMENT FOR PROPOSED CHANNEL AT MAN UK PIN REGION (MUP03,04A,04B&05) (SHEET 1 OF 2)

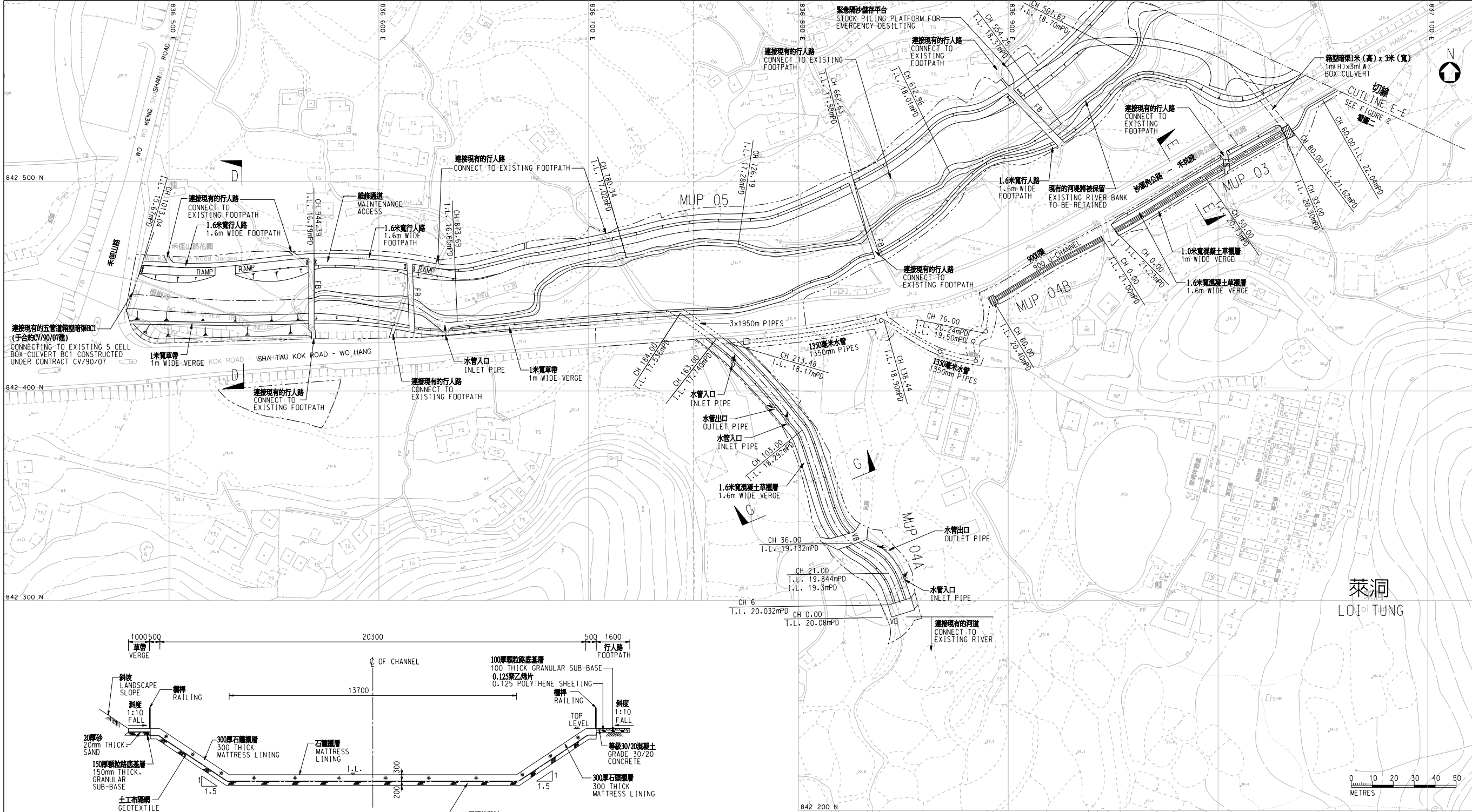
圖則編號 Figure no.	比例 Scale
2	1:2000 (A3)

香港特別行政區政府渠務署
THE GOVERNMENT OF THE HONG KONG
SPECIAL ADMINISTRATIVE REGION
DRAINAGE SERVICES DEPARTMENT

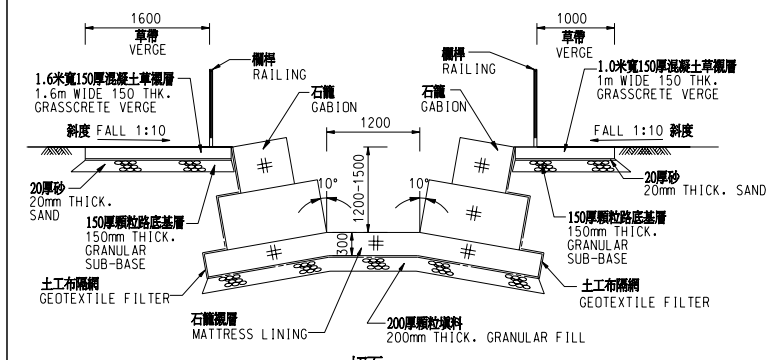
BLACK & VEATCH HONG KONG LIMITED
博威工程顧問有限公司

Plot Date - 5/7/2007

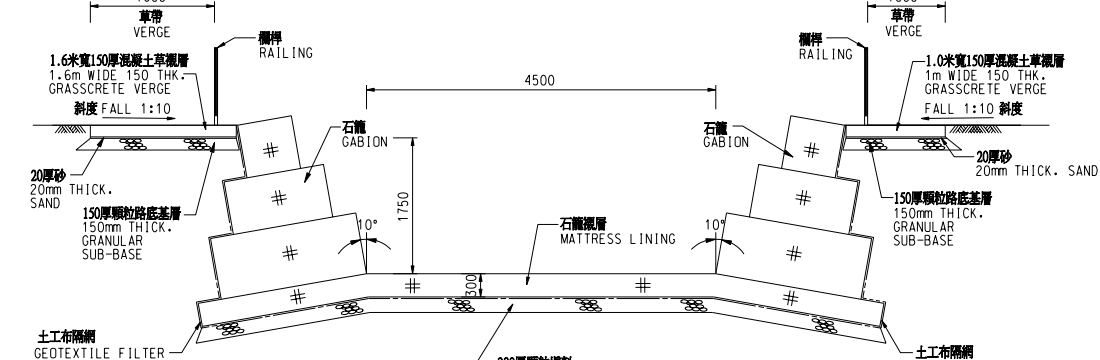
CAD Filename = p:\rain-water\drainage\382486-0201\eia\fig 3.dgn



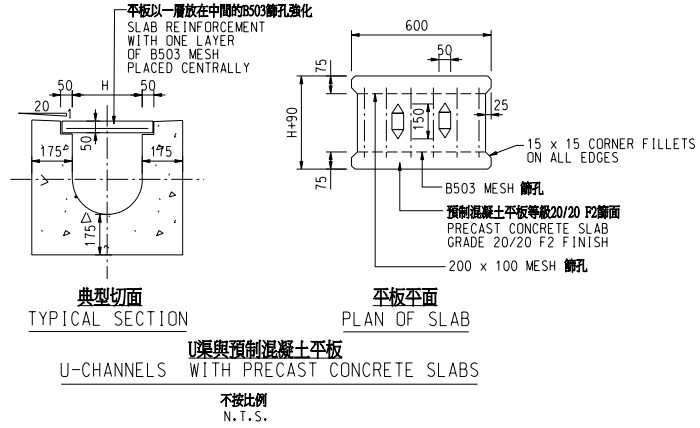
切面
SECTION D-D
MUPO5
比例
SCALE 1:200



切面
SECTION E-E
MUPO3
比例
SCALE 1:100



切面
SECTION G-G
MUPO4A
比例
SCALE 1:100



U-CHANNELS WITH PRECAST CONCRETE SLABS
不接比例
N.T.S.

© Copyright by Black & Veatch Hong Kong Limited

注 NOTES:

- 除特別說明外,全部丈量長度以米為單位。
ALL CHAINAGES ARE IN METRES UNLESS OTHERWISE INDICATED.
- 所有水平以米為單位,並在香港主水平基準上。
ALL LEVELS ARE IN METRES ABOVE PRINCIPAL DATUM (PD).
- 除特別說明外,全部尺寸以毫米為單位。
ALL DIMENSIONS ARE IN MILLIMETRES UNLESS OTHERWISE STATED.
- 展示的渠寬是沿著渠道的平均寬度。
THE CHANNEL WIDTH SHOWN IS THE AVERAGE ALONG THE CHANNEL.

圖例 LEGEND:

—	中心線 CENTER LINE
—	擬建渠道 PROPOSED CHANNEL
- - -	地盤界線 SITE BOUNDARY
CH	丈量長度 CHAINAGE
I.L.	擬建河床水平 PROPOSED INVERT LEVEL
FB	消防專用圍 CRASH GATE
VB	行人橋將會重建 FOOTBRIDGE TO BE REPROVIDED
VB	行車橋將會重建 VEHICULAR BRIDGE TO BE REPROVIDED
□	石籠河堤護坡 GABION BANKS/LANDSCAPED EMBANKMENT SLOPES
○	集水井 CATCHPIT
○	沙井 MANHOLE
▨	擬建閘房 PROPOSED CHAMBER

H	06/06	INVERT LEVELS REVISED	CHH
G	03/06	CHANNEL AND BOUNDARY REVISED	CHH
F	11/05	CHANNEL AND BOUNDARY REVISED	CHH
E	09/05	CHANNEL UPDATED	CHH
D	08/05	CHANNEL DESIGN & BOUNDARY REVISED	CHH
C	06/05	CHANNEL & BOUNDARY UPDATED	CHH
B	09/04	FOOTPATH & VERGE UPDATED	HMC
A	08/04	ISSUE FOR PRELIMINARY REPORT	HMC
Revision	Date	Description	Initial
	Designed	Checked	Drawn
Initial	ZL	MC	LHS
Date	12/06	12/06	12/06
12/06			
Approved			

協議編號
Agreement no. CE 6/2002 (DS)

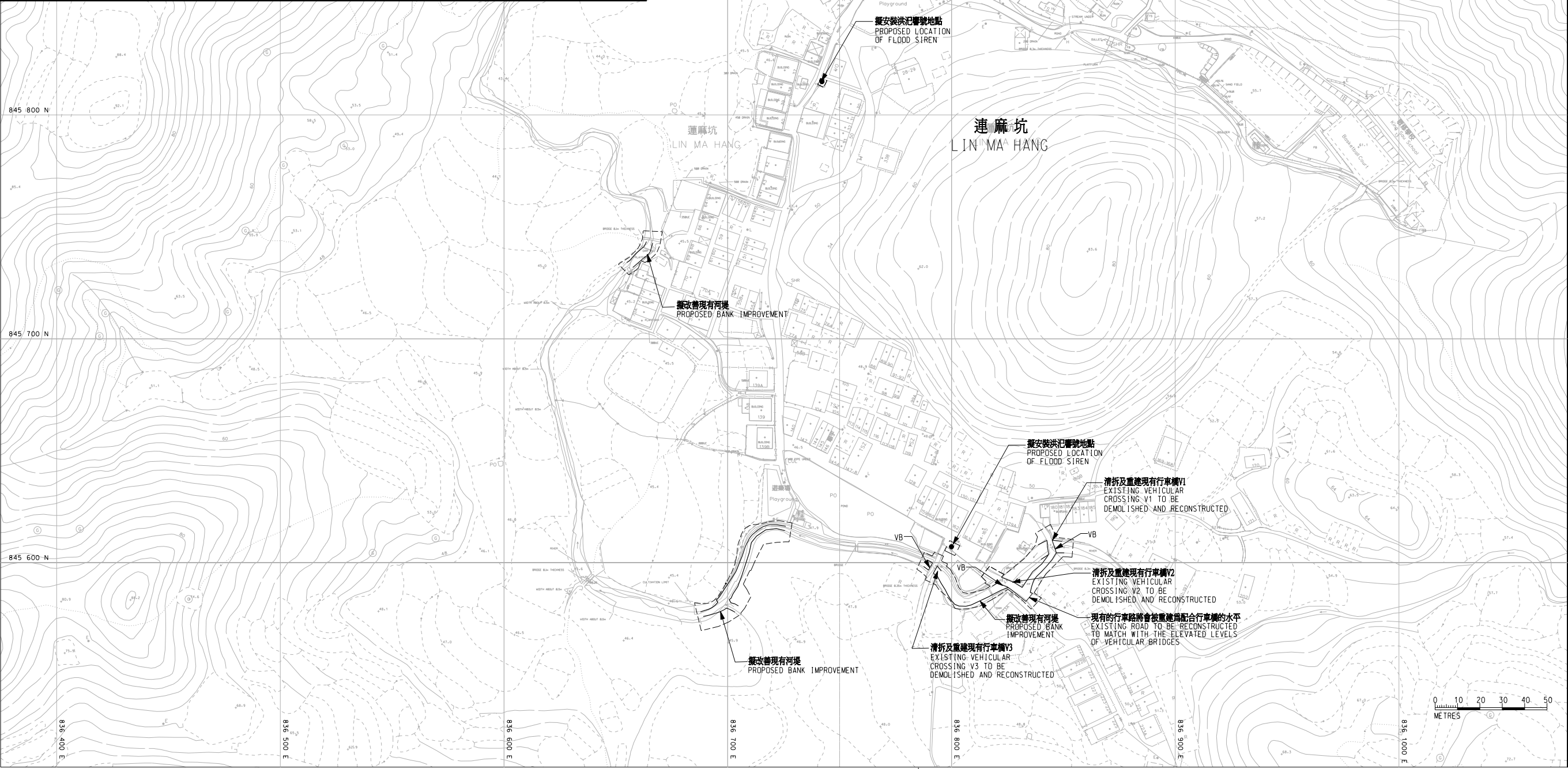
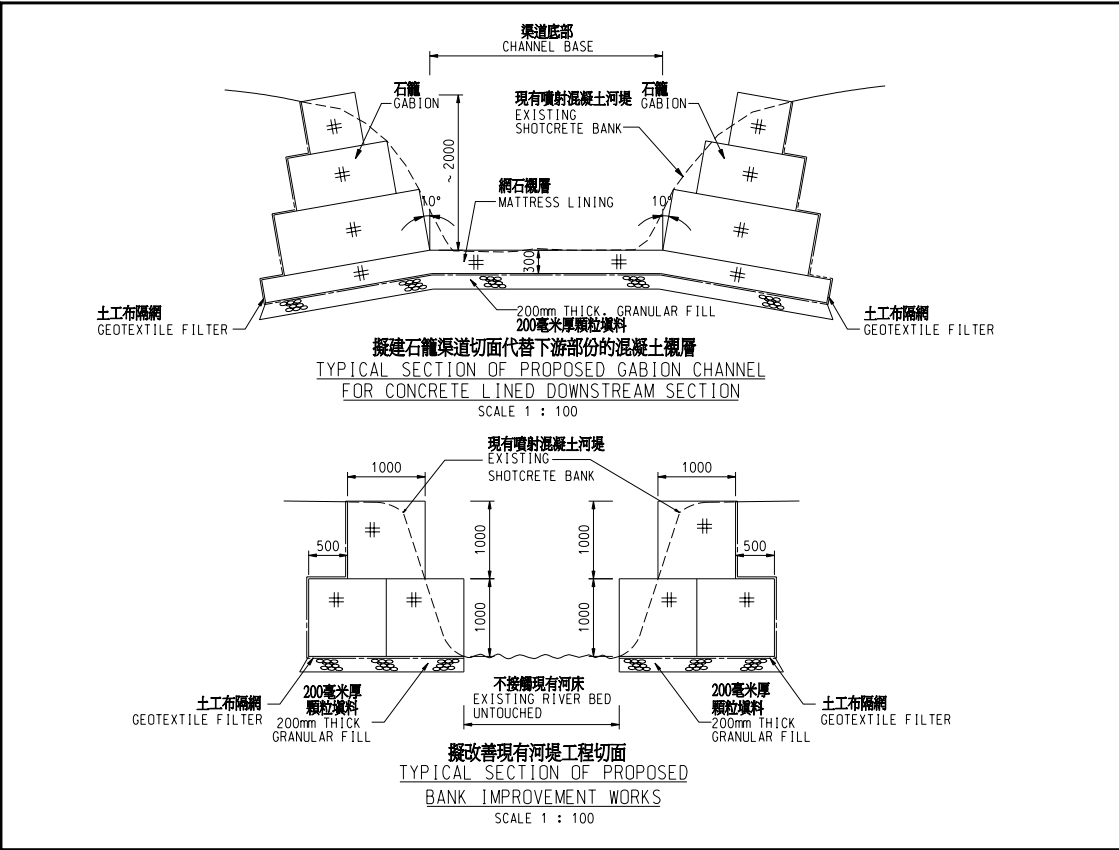
工程項目名稱
Contract title
新界北部雨水排放系統改善計劃 - C部分
研究,設計及建造
DRAINAGE IMPROVEMENT IN NORTHERN NEW TERRITORIES - PACKAGE C
INVESTIGATION, DESIGN AND CONSTRUCTION

圖則名稱
Figure title
萬屋邊地區擬建渠道的規劃設計圖
(MUP03,04A,04B&05)
(2張之第2張)
GENERAL ARRANGEMENT FOR PROPOSED CHANNEL AT MAN UK PIN REGION (MUP03,04A,04B&05) (SHEET 2 OF 2)

圖則編號 Figure no.	比例 Scale
3	1:2000 (A3)

香港特別行政區政府渠務署
THE GOVERNMENT OF THE HONG KONG
SPECIAL ADMINISTRATIVE REGION
DRAINAGE SERVICES DEPARTMENT

BLACK & VEATCH HONG KONG LIMITED
博威工程顧問有限公司



© Copyright by Black & Veatch Hong Kong Limited

注 NOTES:

- 所有水平以米為單位，並在香港主水平基準上。
ALL LEVELS ARE IN METRES ABOVE PRINCIPAL DATUM (mPD).
- 除特別說明外，全部尺寸以毫米為單位。
ALL DIMENSIONS ARE IN MILLIMETRES UNLESS OTHERWISE STATED.
- 洪水意外將會直接由自動報警系統向香港警務處，消防處，民政事務總署和村代表報告。
AUTOMATIC DIALLING SYSTEM IS TO BE PROVIDED TO DIRECTLY REPORT FLOODING INCIDENT TO HKP, FSD, HAD AND VILLAGE REPRESENTATIVES.
- 擬建的安全上回閘種類將會由香港警務處和渠務署共同決定。
THE PROPOSED TYPES OF SECURITY FLAP VALVE IS TO BE AGREED WITH HKP AND DSD.

圖例 LEGEND:

- 地盤界線
SITE BOUNDARY
- 擬安裝洪氾警報探測儀
PROPOSED FLOOD ALARM DETECTOR
- 擬安裝洪氾警號
PROPOSED FLOOD SIREN
- 行車橋將會被重建
VEHICULAR BRIDGE TO BE REPROVIDED
- 擬建渠道
PROPOSED CHANNEL

E	05/06	BOUNDARY REVISED	CHH
D	11/05	WORKS AND BOUNDARY REVISED	CHH
C	08/05	NOTES AND WORK EXTENT UPDATED	CHH
B	09/04	NOTES & LEGEND ADDED	HMC
A	08/04	ISSUE FOR PRELIMINARY REPORT	HMC
Revision	Date	Description	Initial
	Designed	Checked	Drawn
Initial	ZL	MC	LHS
Date	12/06	12/06	12/06

Approved

協議編號
Agreement no. CE 6/2002 (DS)

工程項目名稱
Contract title
新界北部雨水排放系統改善計劃 - C部分
研究,設計及建造
DRAINAGE IMPROVEMENT IN NORTHERN NEW TERRITORIES - PACKAGE C
INVESTIGATION, DESIGN AND CONSTRUCTION

圖則名稱
Figure title

蓮麻坑建議改善工程規劃設計圖
GENERAL ARRANGEMENT FOR PROPOSED IMPROVEMENT WORKS AT LIN MA HANG (LMH01)

圖則編號
Figure no. 4

比例
Scale 1:2000 (A3)

香港特別行政區政府渠務署
THE GOVERNMENT OF THE HONG KONG SPECIAL ADMINISTRATIVE REGION DRAINAGE SERVICES DEPARTMENT

BLACK & VEATCH HONG KONG LIMITED
博威工程顧問有限公司