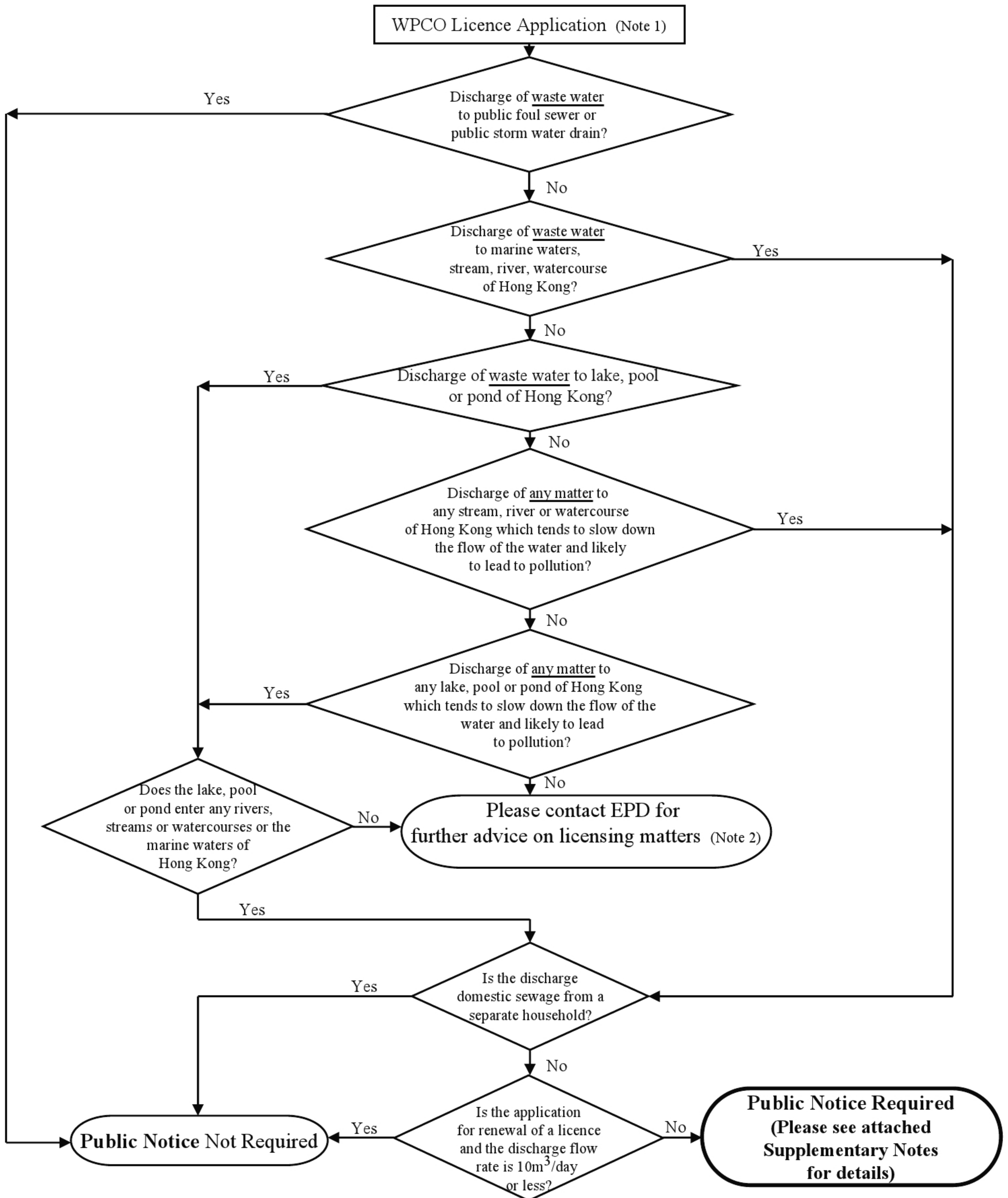


Quick Checking Guideline on Making Public Notification for Licence Application under WPCO



Note 1 : Effluent from industrial, institutional and commercial premises, discharge of domestic sewage from institutional and commercial premises in unsewered areas, domestic sewage treatment plant and domestic premises in unsewered areas are subject to control under the Water Pollution Control Ordinance. The discharger should apply for a licence from EPD and comply with its terms and conditions. For more information, please refer to the EPD booklet "A Guide to the Water Pollution Control Ordinance".

Note 2 : The contact information of EPD's Regional Offices are given in Appendix D of the attached Supplementary Notes.