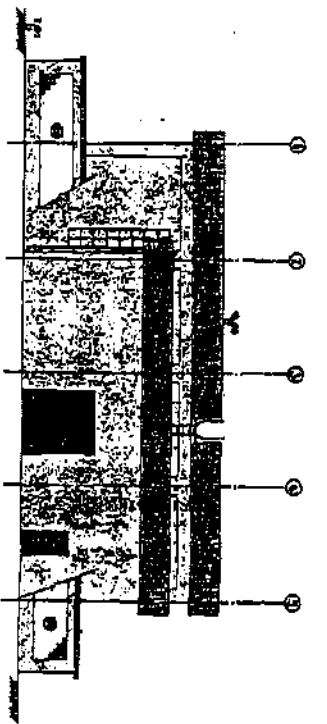
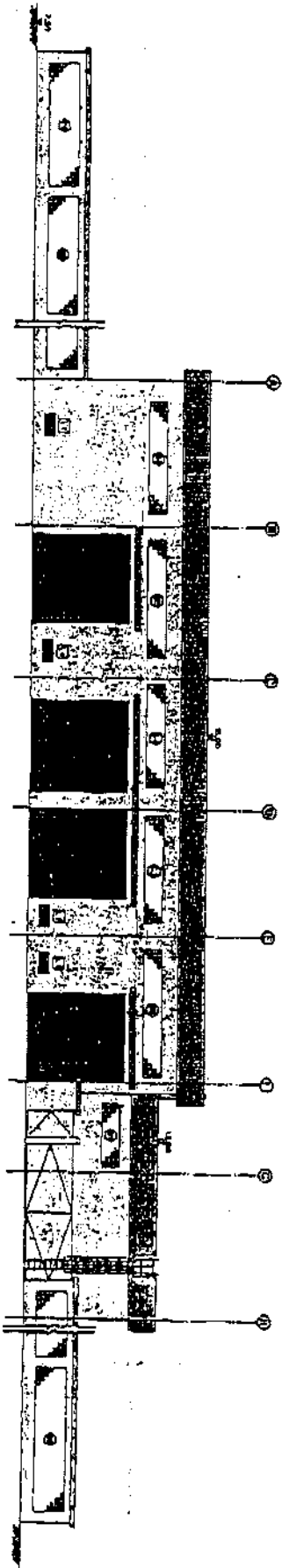


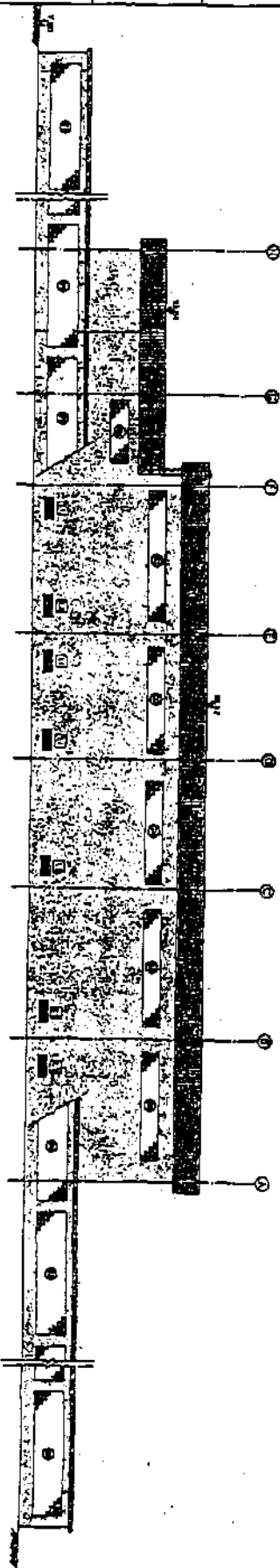
ELEVATION E2
 (SECTION AND PARTIAL VIEW FOR CLIMATE 1)



ELEVATION E4
 (SECTION AND PARTIAL VIEW FOR CLIMATE 1)



ELEVATION E3
 (SECTION AND PARTIAL VIEW FOR CLIMATE 1)



ELEVATION E1
 (SECTION AND PARTIAL VIEW FOR CLIMATE 1)

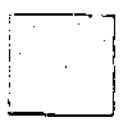
NOTES:
 1. ALL DIMENSIONS ARE IN METERS UNLESS OTHERWISE SPECIFIED.
 2. ALL MATERIALS AND FINISHES TO BE AS SHOWN ON THE DRAWINGS.

LEGEND:

- 1. ROOFING: Flat Roofing with concrete deck and 100mm thick insulation.
- 2. WALLS: 200mm thick concrete blockwork with 50mm thick insulation.
- 3. FLOORS: 100mm thick concrete slab with 50mm thick insulation.
- 4. GLAZING: Double Glazed Windows with 100mm thick insulation.
- 5. FINISHES: As shown on the drawings.



200mm
 thick
 concrete
 blockwork



100mm
 thick
 concrete
 slab



200mm
 thick
 concrete
 blockwork



圖四 元朗抽水站水廠外觀圖
 Figure 4: Yuen Long Sanitary Sewage Pumping Station Building Elevation