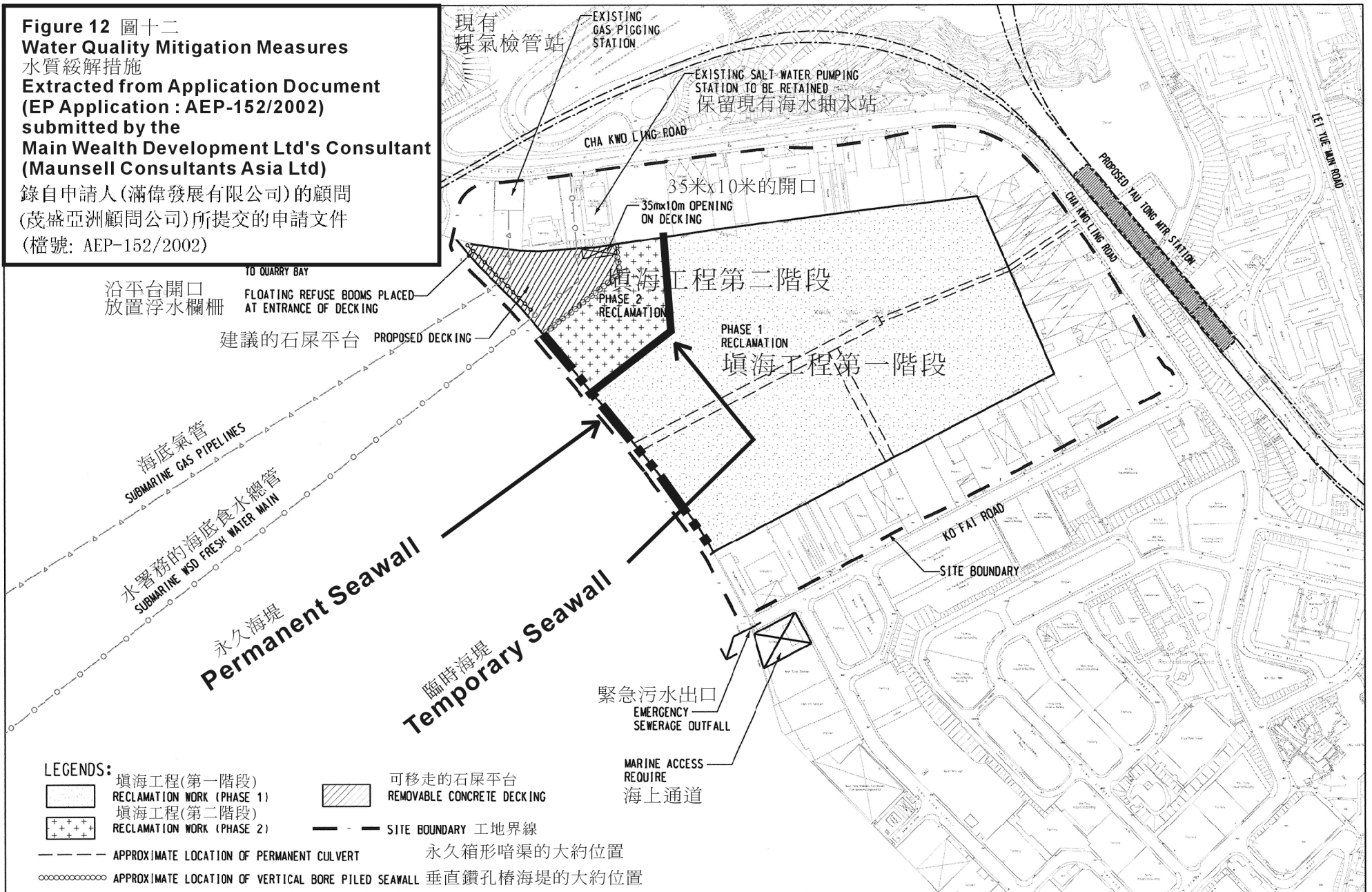


Figure 12 圖十二
Water Quality Mitigation Measures
 水質緩解措施

Extracted from Application Document
 (EP Application : AEP-152/2002)
 submitted by the
Main Wealth Development Ltd's Consultant
(Maunsell Consultants Asia Ltd)
 錄自申請人(滿偉發展有限公司)的顧問
 (茂盛亞洲顧問公司)所提交的申請文件
 (檔號: AEP-152/2002)



- LEGENDS:**
- 填海工程(第一階段) RECLAMATION WORK (PHASE 1)
 - 填海工程(第二階段) RECLAMATION WORK (PHASE 2)
 - APPROXIMATE LOCATION OF PERMANENT CULVERT 永久箱形暗渠的大約位置
 - APPROXIMATE LOCATION OF VERTICAL BORE PILED SEAWALL 垂直鑽孔樁海堤的大約位置
 - 可移走的石屎平台 REMOVABLE CONCRETE DECKING
 - SITE BOUNDARY 工地界線
 - 緊急污水出口 EMERGENCY SEWERAGE OUTFALL
 - MARINE ACCESS REQUIRE 海上通道

Maunsell in association with
 WHA, DLN,
 EHS, MEMCL, MGS

YAU TONG BAY DEVELOPMENT
 LOCATION OF FLOATING REFUSE BOOMS
 NEAR CHA KWO LING SALTWATER PUMPING STATION

MAIN WEALTH DEVELOPMENT LIMITED	
Scale 1 : 3500	Cad Ref. 9469/01/fig2.4d.dgn
Date JAN 01	