

- NOTES :
1. ALL DIMENSIONS ARE IN MILLIMETERS UNLESS STATED OTHERWISE.
 2. ALL LEVELS ARE IN METRES ABOVE PRINCIPAL DATUM LEVEL.
 3. THIS DRAWING SHOULD BE READ IN CONJUNCTION WITH DRAWING NO. DDH/21505/9923C.

REV.	DATE	DESCRIPTION	BY	CHECKED
C	2 JUN 2005	GENERAL REVISION	T. L. CHAN	T. L. CHAN
B	5 MAY 2005	GENERAL REVISION	T. L. CHAN	T. L. CHAN
A	4 APR 2005	GENERAL REVISION	T. L. CHAN	T. L. CHAN

REVISED BY	DATE	APPROVED BY	DATE
DESIGNED	CHONG S. C. HO	17.11.04	
DRAWN	CHONG W. L. SO	NOV. 04	
CHECKED	CHONG T. L. CHAN	17.11.04	
NOTED	CHONG K. T. LAM	17.11.04	

APPROVED
 CHONG P. S. CHAN 8 JUNE 2005
 Chief Engineer

CONTRACT NO.

FILE NO. SP/8/421505

PROJECT NO. 21505

PROJECT

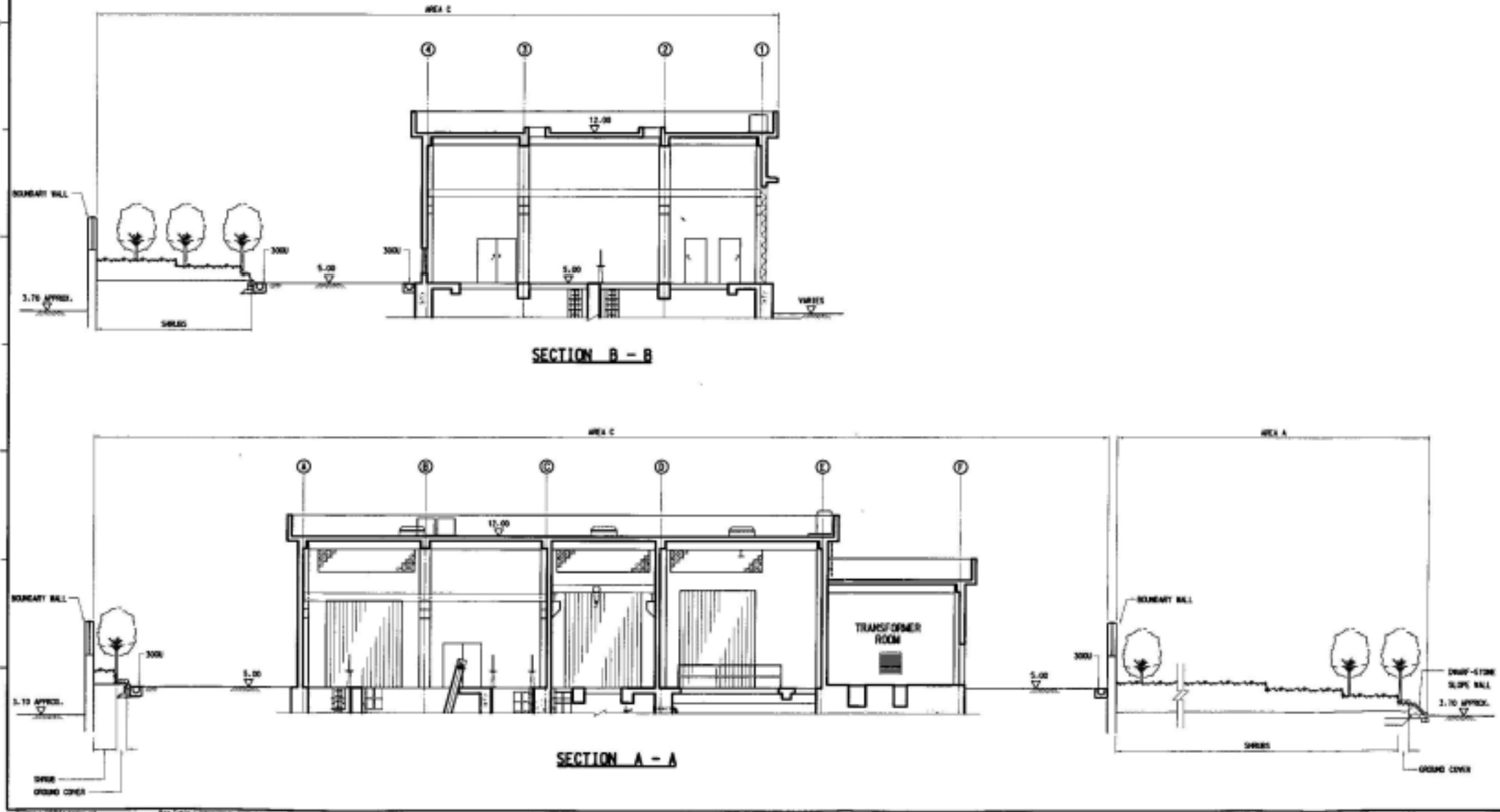
PROJECT TITLE
 YUEN LONG AND KAM TIN SEWERAGE AND SEWAGE DISPOSAL -
 KAM TIN TRUNK SEWERAGE PHASE 1 AND AU TAU TRUNK SEWERS
 SHA PO SEWAGE PUMPING STATION -
 PLANTING PLAN AND SCHEDULE
 (SHEET 2 OF 2)

DRAWING NO. DDH/21505/9923C
 SCALE 1:100

COPYRIGHT RESERVED

OFFICE
 SEWERAGE PROJECTS DIVISION

SEWERAGE PROJECTS DIVISION
 DRAINAGE SERVICES DEPARTMENT
 GOVERNMENT OF THE HONG KONG
 SPECIAL ADMINISTRATIVE REGION



Project Title - Yuen Long and Kam Tin Sewerage and Sewage Disposal – Kam Tin Trunk Sewerage Phase 1 and Au Tau Trunk Sewers
 工程名稱 - 元朗及錦田污水收集及排放計劃 - 錦田主幹渠第一期工程及凹頭幹渠工程

Environmental Permit No. : EP-220/2005
 環境許可證編號 : EP-220/2005

Figure 8 - Planting Plan at Sha Po Sewage Pumping Station (Sheet 2 of 2) (Extracted from the application no. AEP-220/2005)
 圖八 - 沙埔污水泵水站的種植圖(頁二之二) (摘錄自申請書編號 AEP-220/2005)

