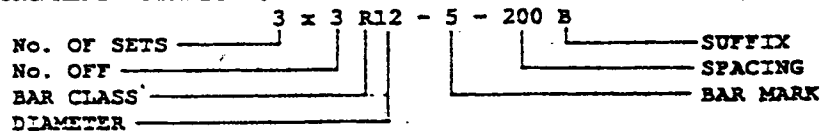


GENERAL NOTES :

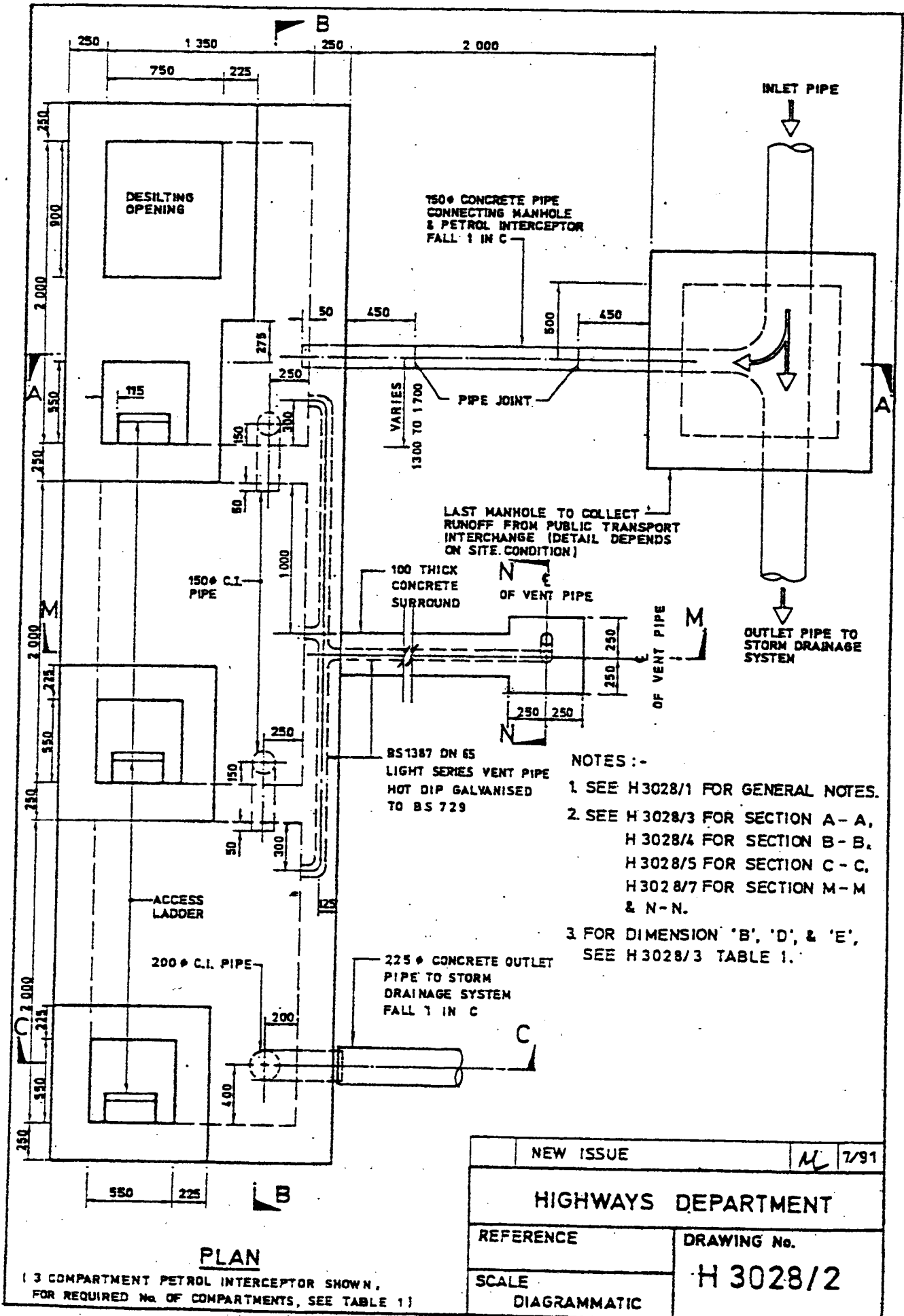
1. THE PETROL INTERCEPTOR IS DESIGNED TO PROVIDE AT LEAST 20 MINUTES RETENTION TO 5-10% OF THE MAXIMUM RUNOFF COLLECTED BY THE TRANSPORT INTERCHANGE IN A 1 IN 2 YEAR RAINSTORM.
2. DETAILS OF PETROL INTERCEPTOR SHOWN IN THESE DRAWING IS FOR OPEN SPACE PUBLIC TRANSPORT INTERCHANGE. FOR PETROL INTERCEPTOR AT COVERED PUBLIC TRANSPORT INTERCHANGE SEE CEO STANDARD DRAWING CE 1041.
3. ALL DIMENSIONS ARE IN MILLIMETRES.
4. CONCRETE TO BE GRADE 30/20.
5. REINFORCEMENT SHALL COMPLY TO BS 4449 AND SHALL BE BENT IN ACCORDANCE WITH BS 4466.
6. COVER TO REINFORCEMENT TO BE 50 mm UNLESS OTHERWISE SPECIFIED.
7. REINFORCEMENT NOTATION :

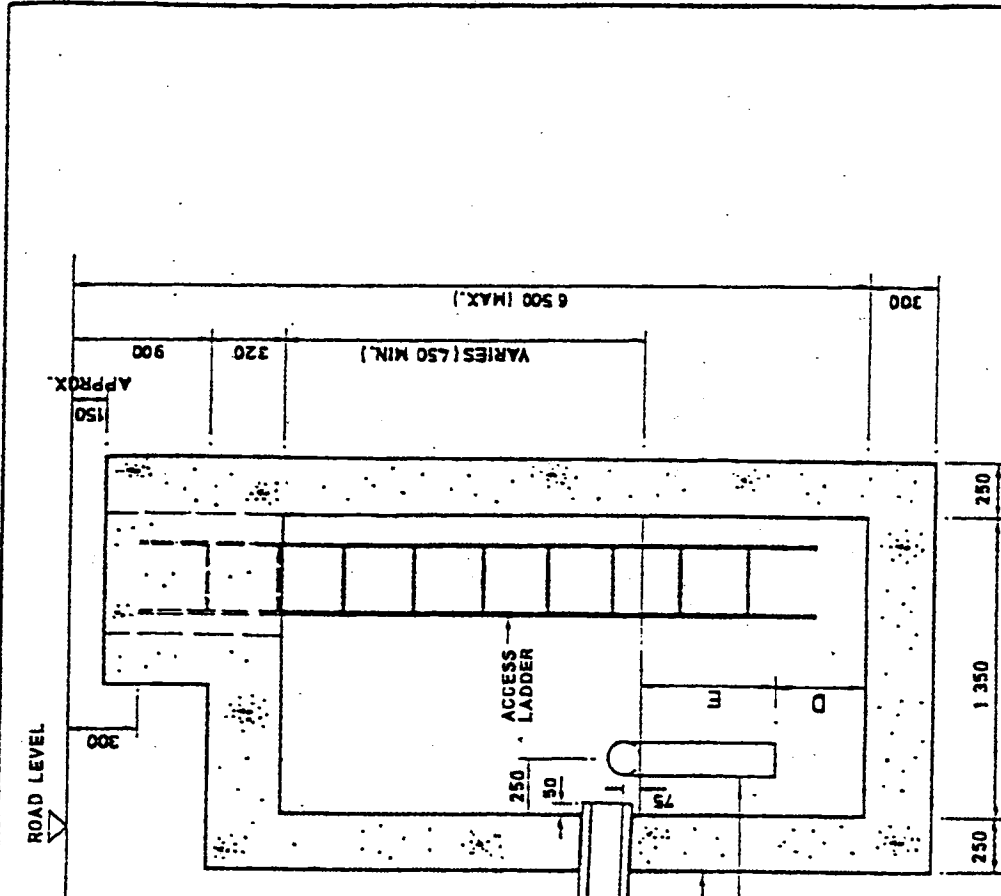


BAR CLASS - R- GRADE 250 PLAIN ROUND STEEL BAR
 SUFFIX --- T- TOP
 B- BOTTOM
 NF- NEAR FACE
 FF- FAR FACE
 EF- EACH FACE

8. MINIMUM LAP LENGTH : 40 DIAMETER OF BAR FOR MILD STEEL PLAIN BAR.
9. STRUCTURAL STEELWORK SHALL BE GRADE 43C COMPLY WITH BS 4360 UNLESS OTHERWISE SPECIFIED.
10. ALL FILLET WELDS TO BE 6 mm UNLESS OTHERWISE SPECIFIED.
11. STAINLESS STEEL ACCESS LADDER TO BE OF MINIMUM GRADE 304 S12 TO BS 970:PT1:1983.
12. FOR RSJ CONNECTIONS, SEE CEO STANDARD DRAWING CE 1020.
13. FOR DETAILS OF TOP TREATMENT TO PETROL INTERCEPTOR, SEE CEO STANDARD DRAWING CE 1021 FOR FLEXIBLE ROAD SURFACE AND HIGHWAY STANDARD DRAWING H 1006 FOR CONCRETE ROAD SLAB.
14. FOR DETAILS OF COVER TO PETROL INTERCEPTOR, SEE CEO STANDARD DRAWING CE 1022.
15. FOR DETAILS OF DESILTING OPENING COVER, SEE CEO STANDARD DRAWING CE 1023.

<p>PETROL INTERCEPTOR FOR OPEN PUBLIC TRANSPORT INTERCHANGE</p>		NEW ISSUE		AK	7/91
		HIGHWAYS DEPARTMENT			
		REFERENCE		DRAWING No.	
		SCALE		H 3028/1	





NOTES :-
SEE H 3028/1 FOR GENERAL NOTES

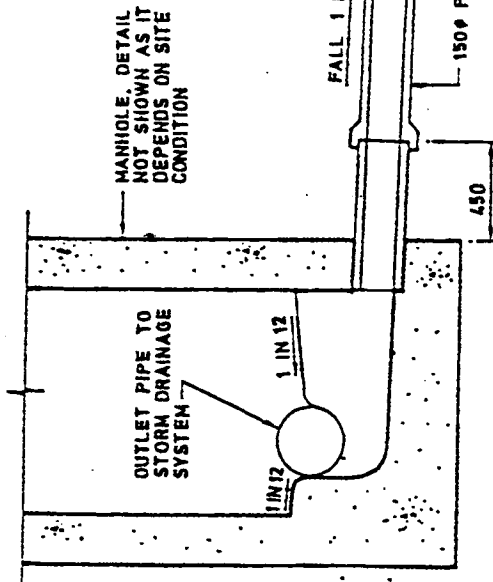


TABLE 1

CATCHMENT AREA OF THE PUBLIC TRANS-PORT INTERCHANGE A (m ²)	LEVEL DIFFERENCE OF THE 2 OUTLET PIPES IN THE LAST MANHOLE B (mm)	FALL OF INLET AND OUTLET PIPE OF PETROL INTERCEPTOR C	D (mm)	E (mm)	No. OF COMPARTMENT
A ≤ 1000	60	2 00	500	400	2
1000 < A ≤ 2 000	90	2 00	600	400	3
2 000 < A ≤ 3 000	150	2 00	550	600	4
3 000 < A ≤ 4 000	150	1 00	725	600	4

SECTION A-A

NEW ISSUE M 7/91

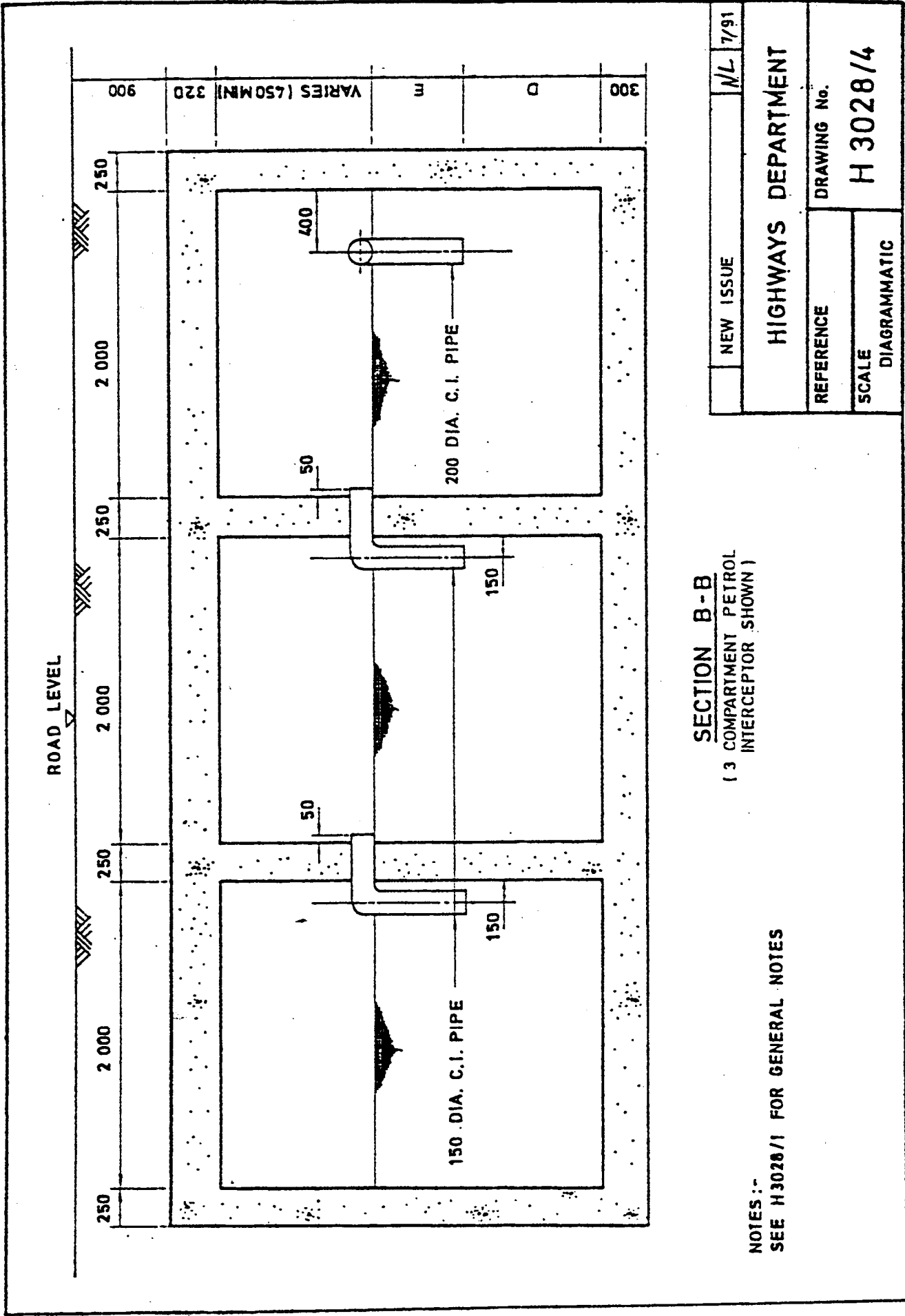
HIGHWAYS DEPARTMENT

REFERENCE

SCALE

DIAGRAMMATIC

DRAWING No. H 3028/3

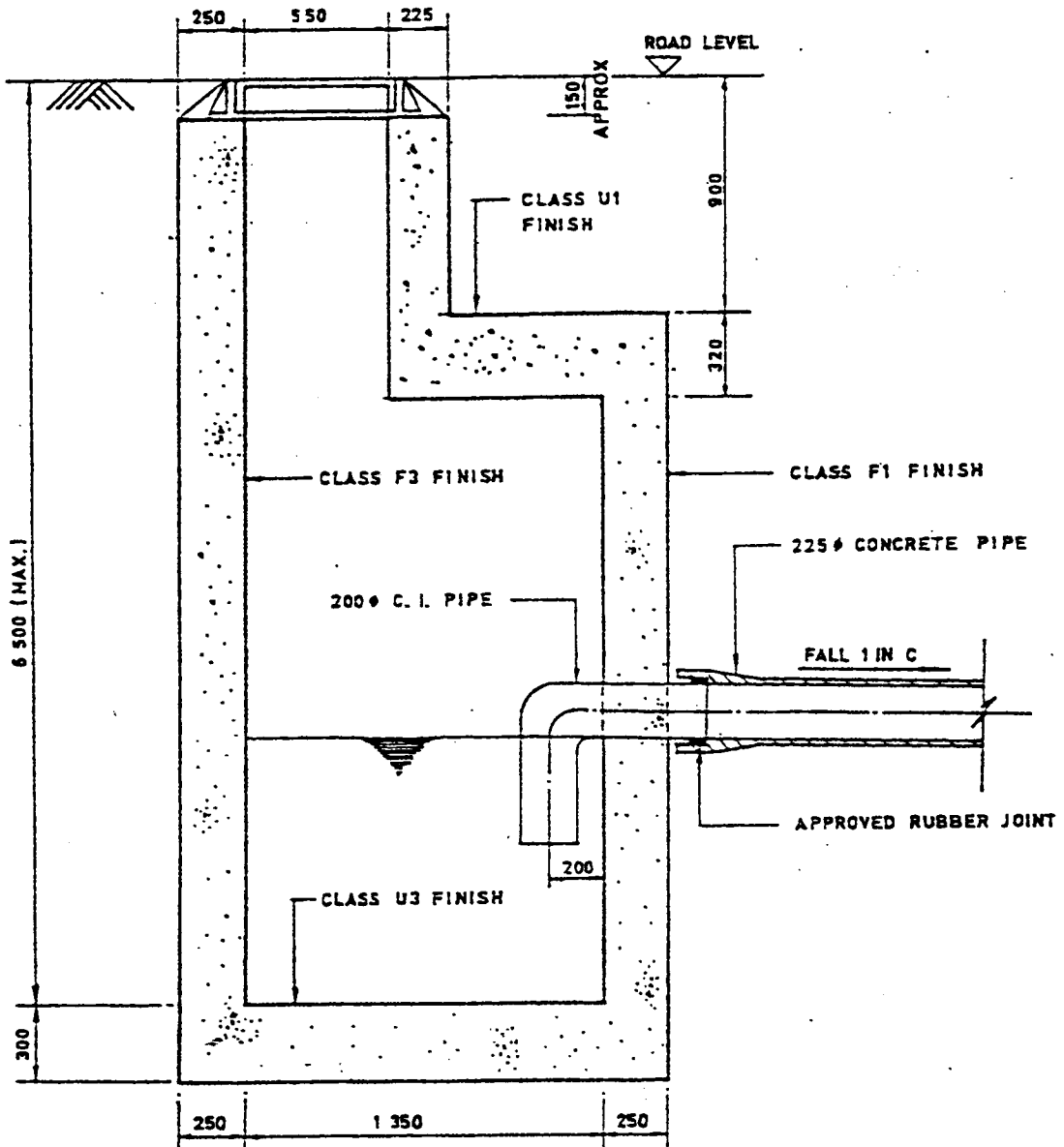


SECTION B-B
(3 COMPARTMENT PETROL INTERCEPTOR SHOWN)

NOTES :-
SEE H3028/1 FOR GENERAL NOTES

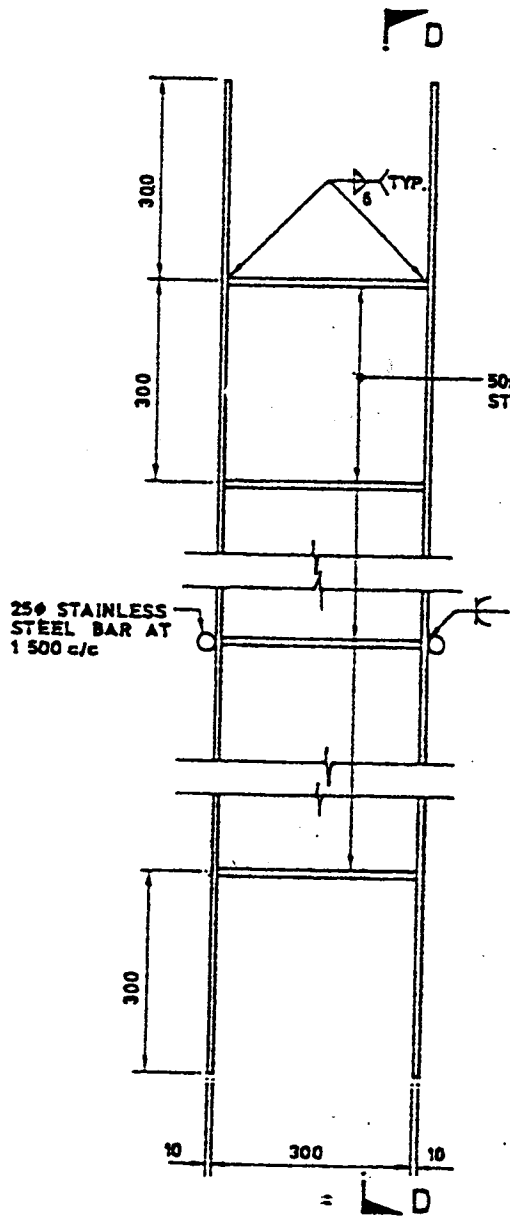
NEW ISSUE	N/L	7/91
HIGHWAYS DEPARTMENT		
REFERENCE	DRAWING No.	
SCALE	DIAGRAMMATIC	
	H 3028/4	

NOTES :-
SEE H 3028/1 FOR GENERAL NOTES

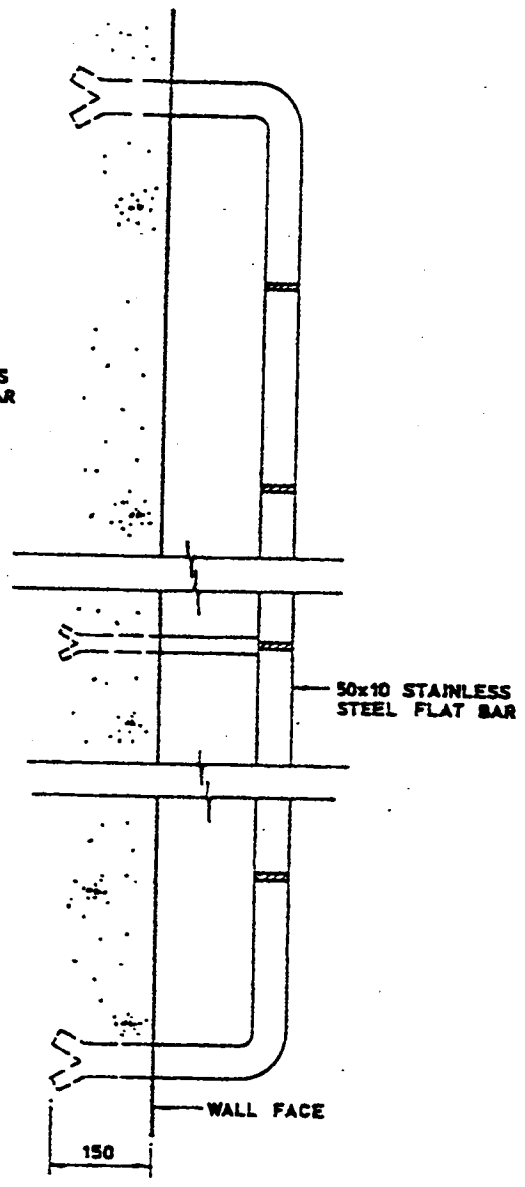


SECTION C-C

NEW ISSUE		NL	7/91
HIGHWAYS DEPARTMENT			
REFERENCE		DRAWING No.	
SCALE		H 3028/5	
1: 25			

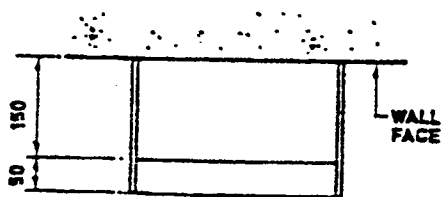


ELEVATION



SECTION D-D

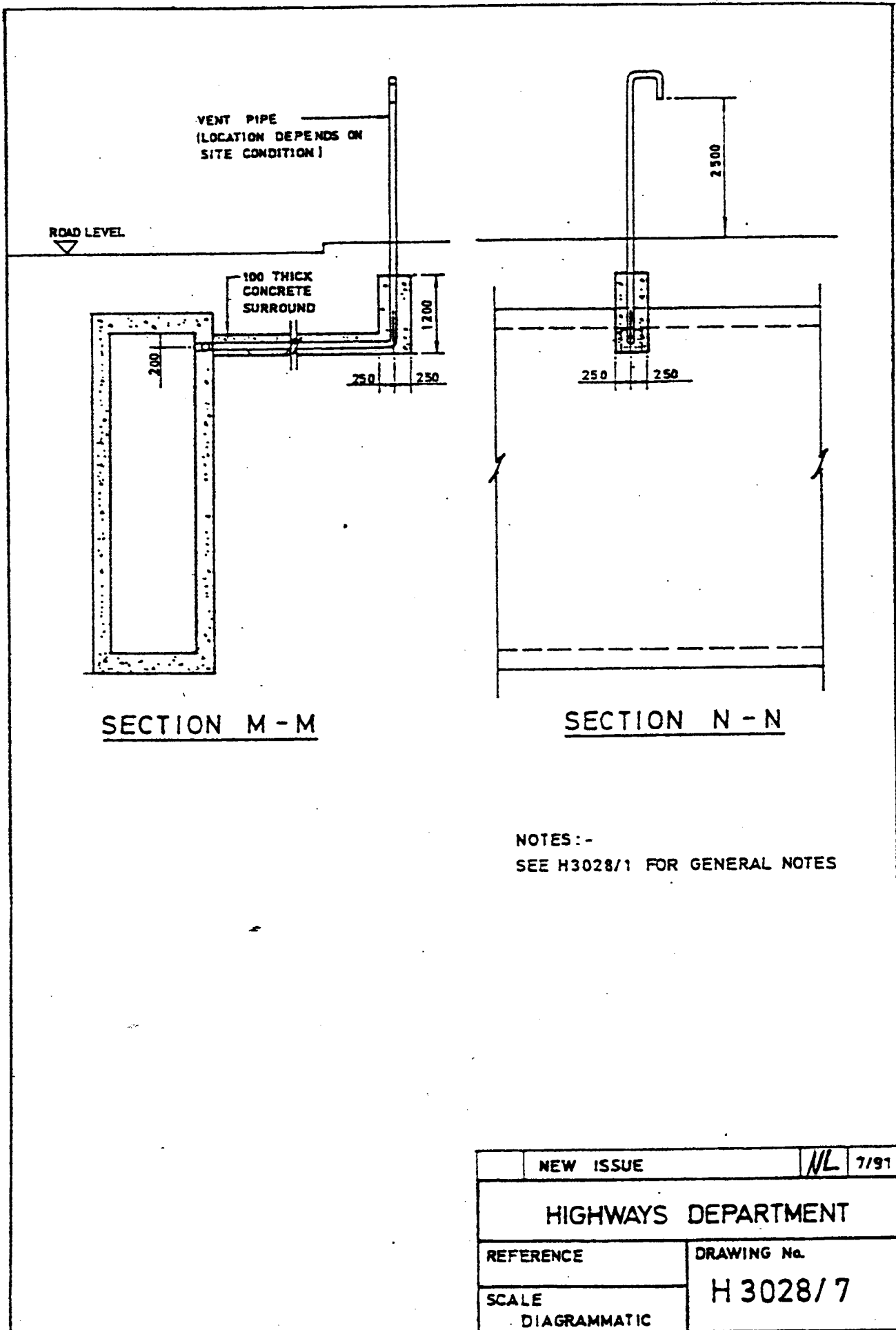
NOTES:-
SEE H 3028/1 FOR GENERAL NOTES



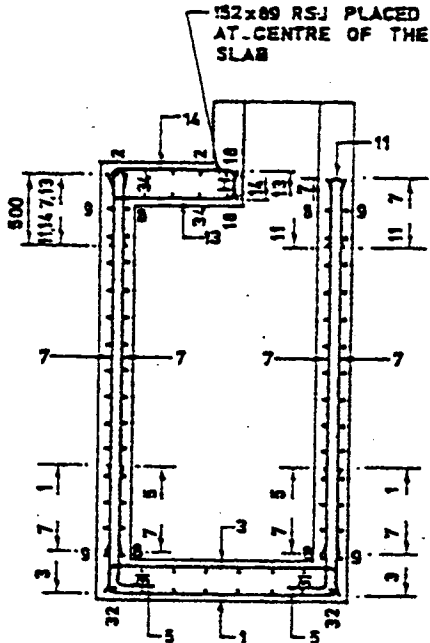
PLAN

ACCESS LADDER

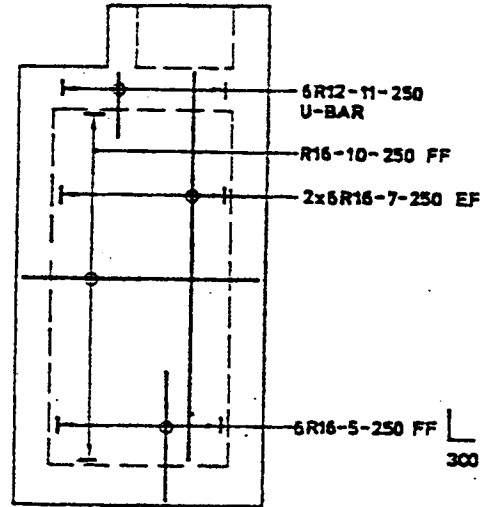
NEW ISSUE		ML	7/91
HIGHWAYS DEPARTMENT			
REFERENCE		DRAWING No.	
SCALE		H 3028/6	
1:10			



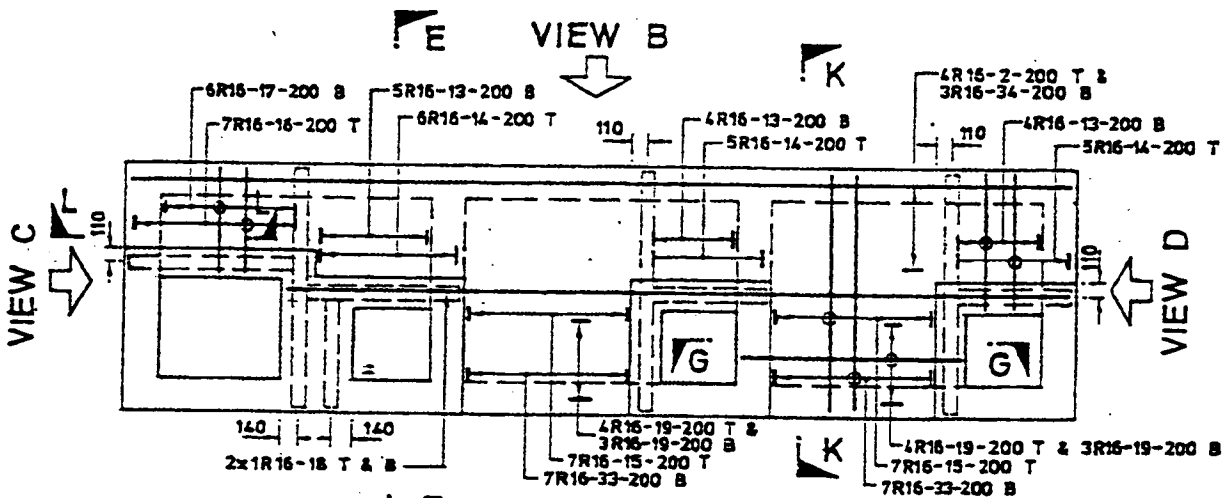
NOTES :-
SEE H 3028/1 FOR GENERAL NOTES



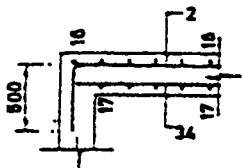
SECTION E-E



VIEW C
(VIEW D SIMILAR
BUT OPP. HANDED)



VIEW A
PLAN

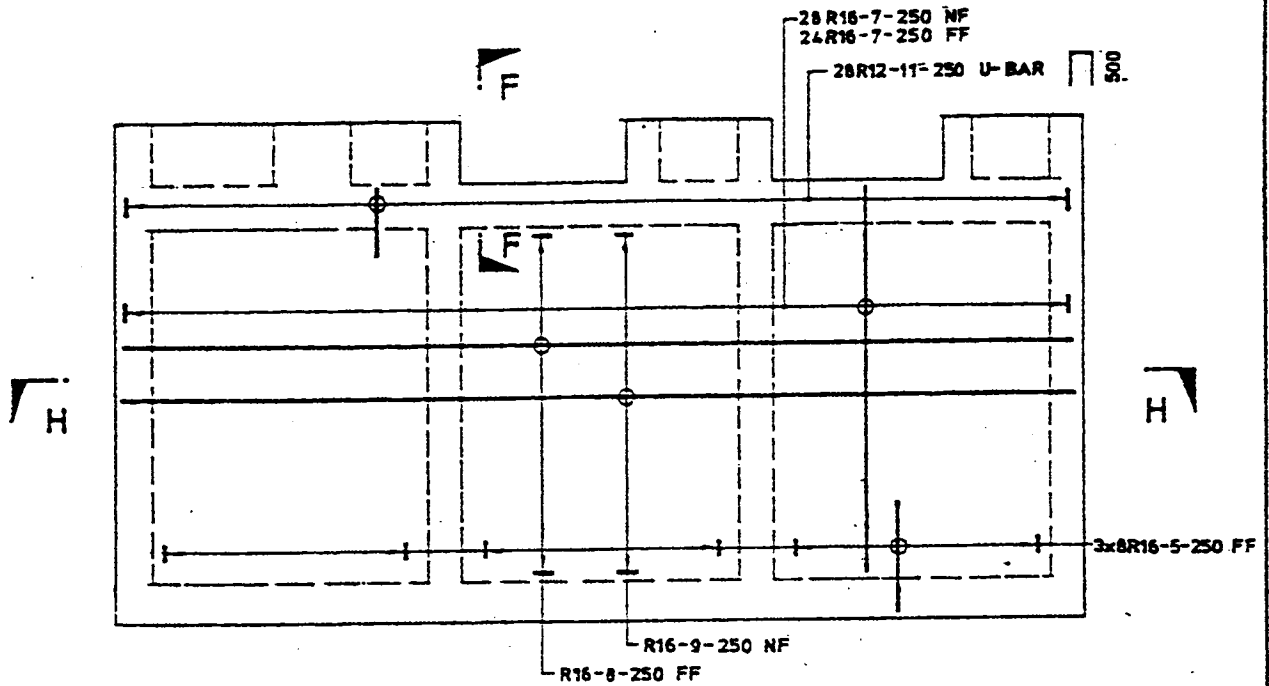


SECTION L-L
(NOTE: WALL BARS NOT
SHOWN FOR CLARITY)

PETROL INTERCEPTOR
R.C. DETAIL

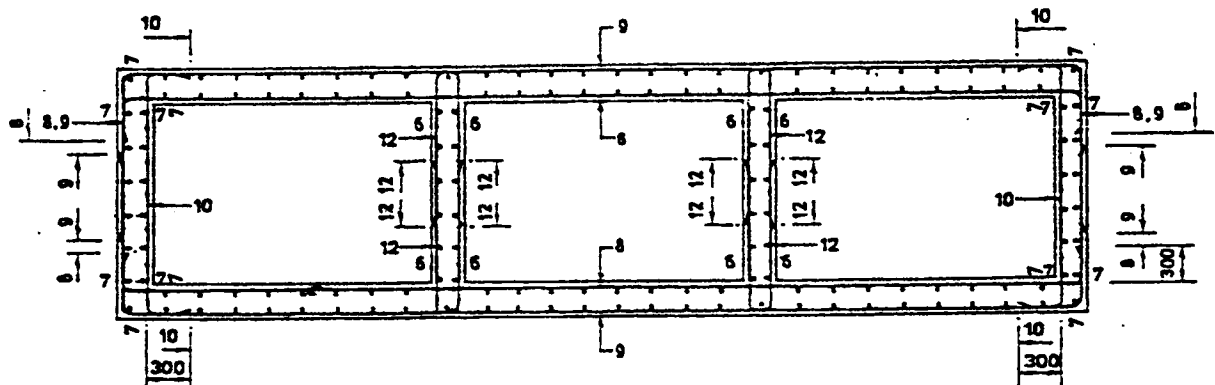
NEW ISSUE		ML	7/91
HIGHWAYS DEPARTMENT			
REFERENCE		DRAWING No.	
SCALE		H 3028/ 8	
1: 50			

NOTES:-
SEE H3028/1 FOR GENERAL NOTES

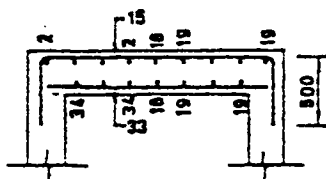


VIEW A

(VIEW B SIMILAR
BUT OPP. HANDED)



SECTION H-H

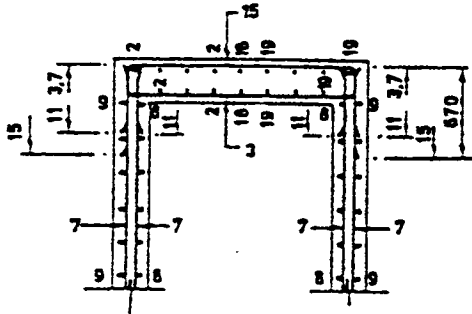


SECTION K-K

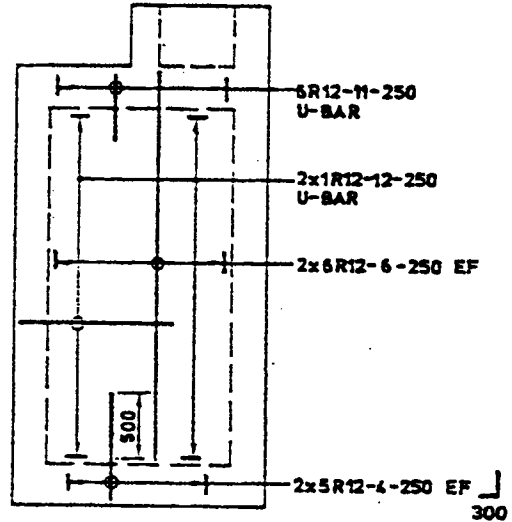
(NOTE: WALL BARS NOT
SHOWN FOR CLARITY)

NEW ISSUE		NL	7/91
HIGHWAYS DEPARTMENT			
REFERENCE	DRAWING No.		
SCALE	H 3028/9		
1:50			

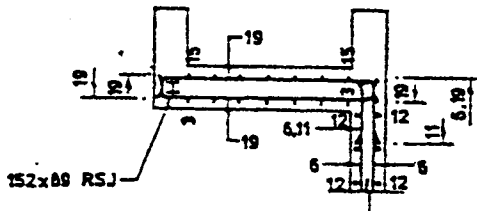
NOTES :-
SEE H 3028/1 FOR GENERAL NOTES



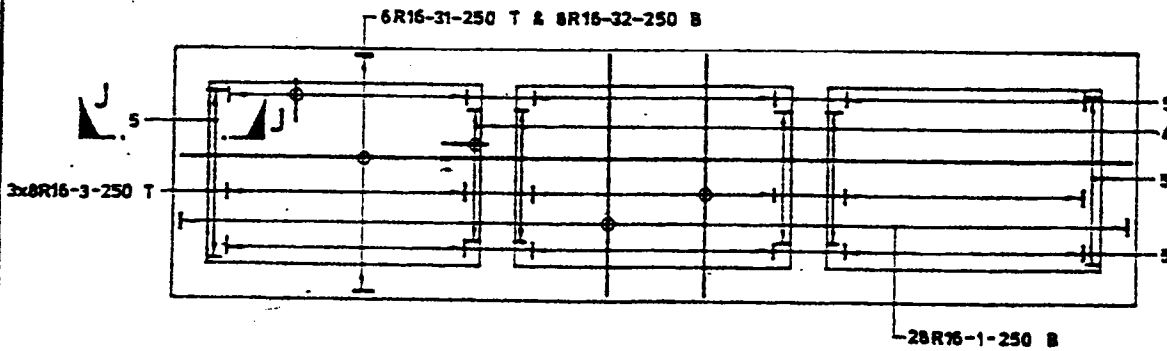
SECTION F-F



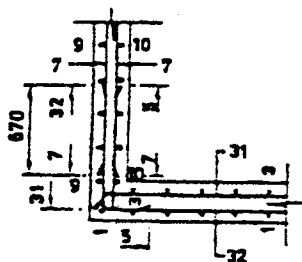
INTERNAL WALL



SECTION G-G



BASE SLAB



SECTION J-J

NEW ISSUE		N/L	7/91
HIGHWAYS DEPARTMENT			
REFERENCE		DRAWING No.	
SCALE		H 3028/10	
1:50			