





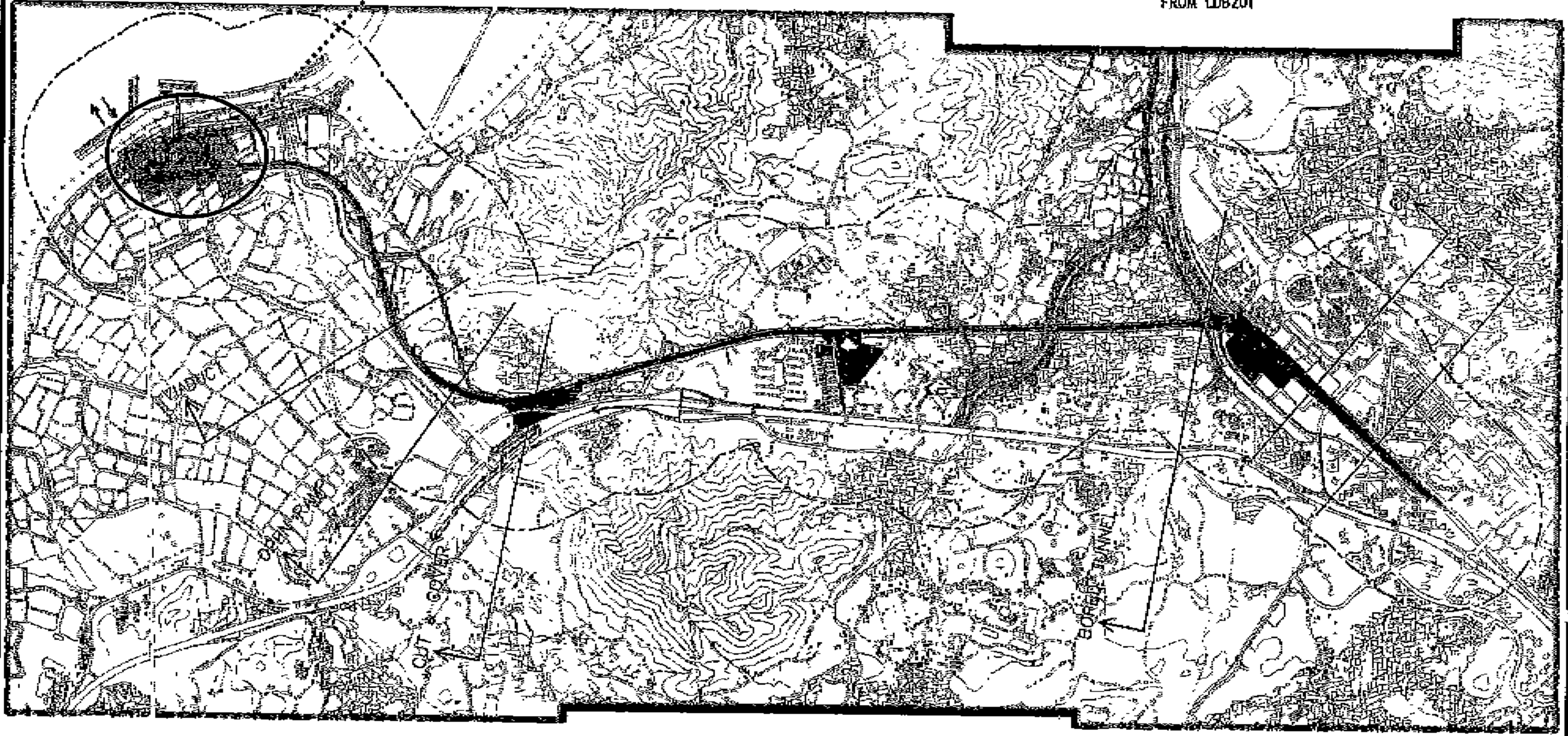


# Lok Ma Chau Station

Legend:-

-  LCC202 ALIGNMENT
-  LDB201 ALIGNMENT
-  LCC300 AND WORKS AREA
-  WORKS AREAS FOR LDB201
-  ROUTE TO/FROM PUBLIC FILL AREA FOR LCC300
-  ROUTE TO TSEUNG KWAN O FROM LDB201



Sheung Shui to Lok Ma Chau Spur Line (上水至落馬洲支線)  
 Figure 3 - Location of Lok Ma Chau Station  
 圖三 - 落馬洲火車站位置圖  
 (Reproduced from Drawing No.: 9.2 of (Volume 5 of 5) of the EIA Report (Register No.: AEIAR-052/2002)  
 摘自環評報告第五冊圖 9.2 (登記冊編號: AEIAR-052/2002)

Environmental  
 Permit No.:  
 EP-02/129/2002/A  
 環境許可證編號:  
 EP-02/129/2002/A

