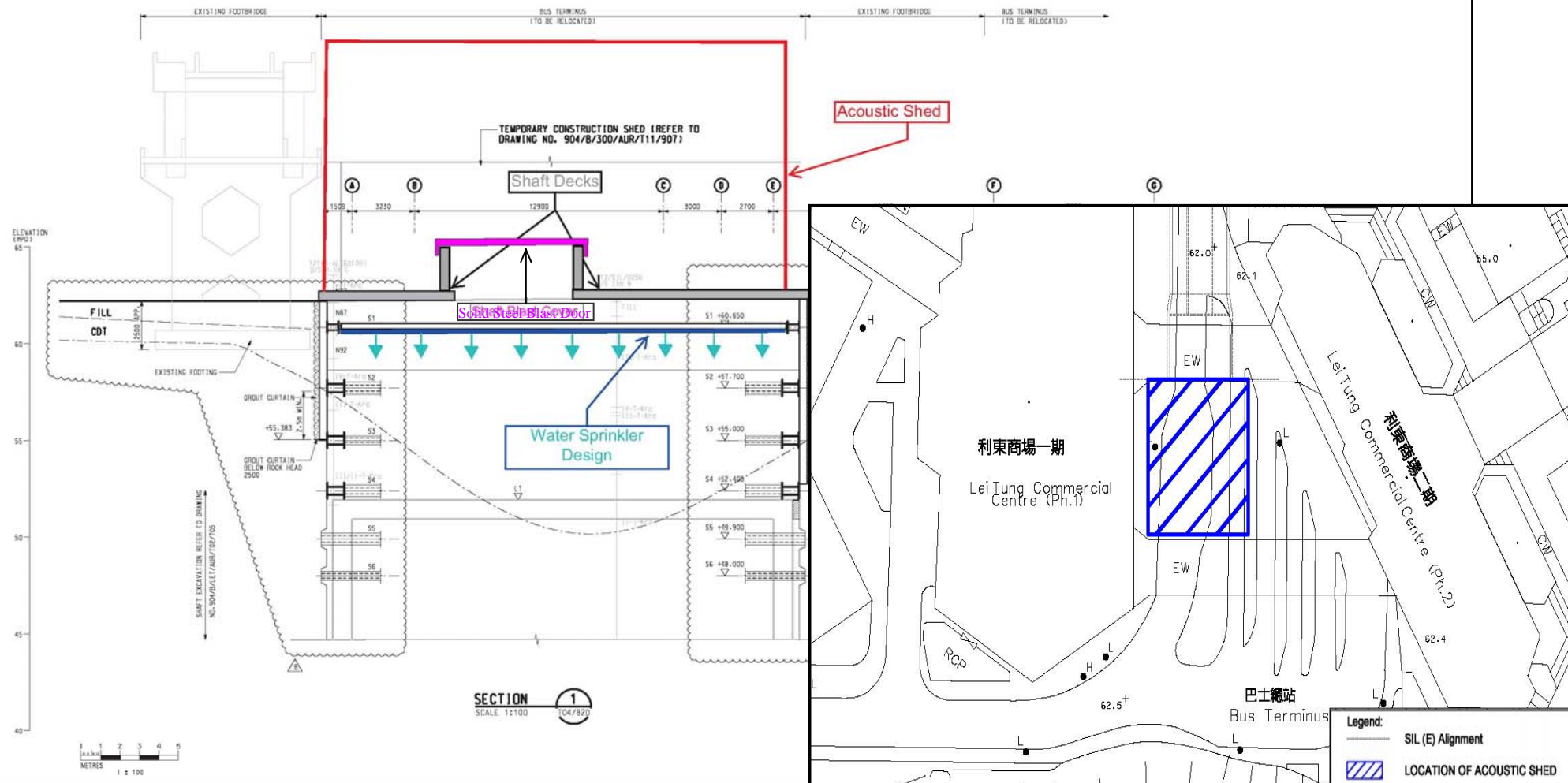


Detailed Layout and Specification for the Blast Door and Acoustic Shed
 爆破門及隔音棚的詳細設計及規格

NOTES :
 1. REFER TO DRAWING NO. 904/E/300/ABR/T2/4RD T1862 FOR SETTING OUT PIPE PILES WITH RESPECT TO SHAFT STRUCTURE.
 2. REFER TO DRAWING NO. 904/E/300/ABR/T2/4RD T1845 FOR TYPICAL CONSTRUCTION SEQUENCE.

LEGEND :
 MASS CONCRETE FILL
 BACKFILL



 **Project Title: South Island Line (East)**
 工程項目名稱：南港島綫(東段)
Environmental Permit No. : EP-407/2010/E
 環境許可證編號：EP-407/2010/E

Figure 17: Location Plan of Blast Door and Acoustic Shed
 圖 17: 爆破門及隔音棚位置圖
 (This figure was prepared based on Drawing No. Appendix E of Environmental Review Report for Lei Tung Station – Excavation for LET Entrance B Shaft by Drill and Blast Method)
 (本圖是根據利東站環境檢討報告 - 以鑽鑿及爆破形式挖掘利東站入口 B 圖附件 E 編制)