

MARI



美華工業園
 CHAN INDUSTRIAL PARK

海旁村舊屋
 Old House of
 Hoi Pa Village
 (Declared
 Monument)

前九五村地盤
 OLD HOUSE AT
 FORMERLY LOT 936
 HOI PA VILLAGE
 TAVEN WAN

7-SW-16A
 7-SW-16C

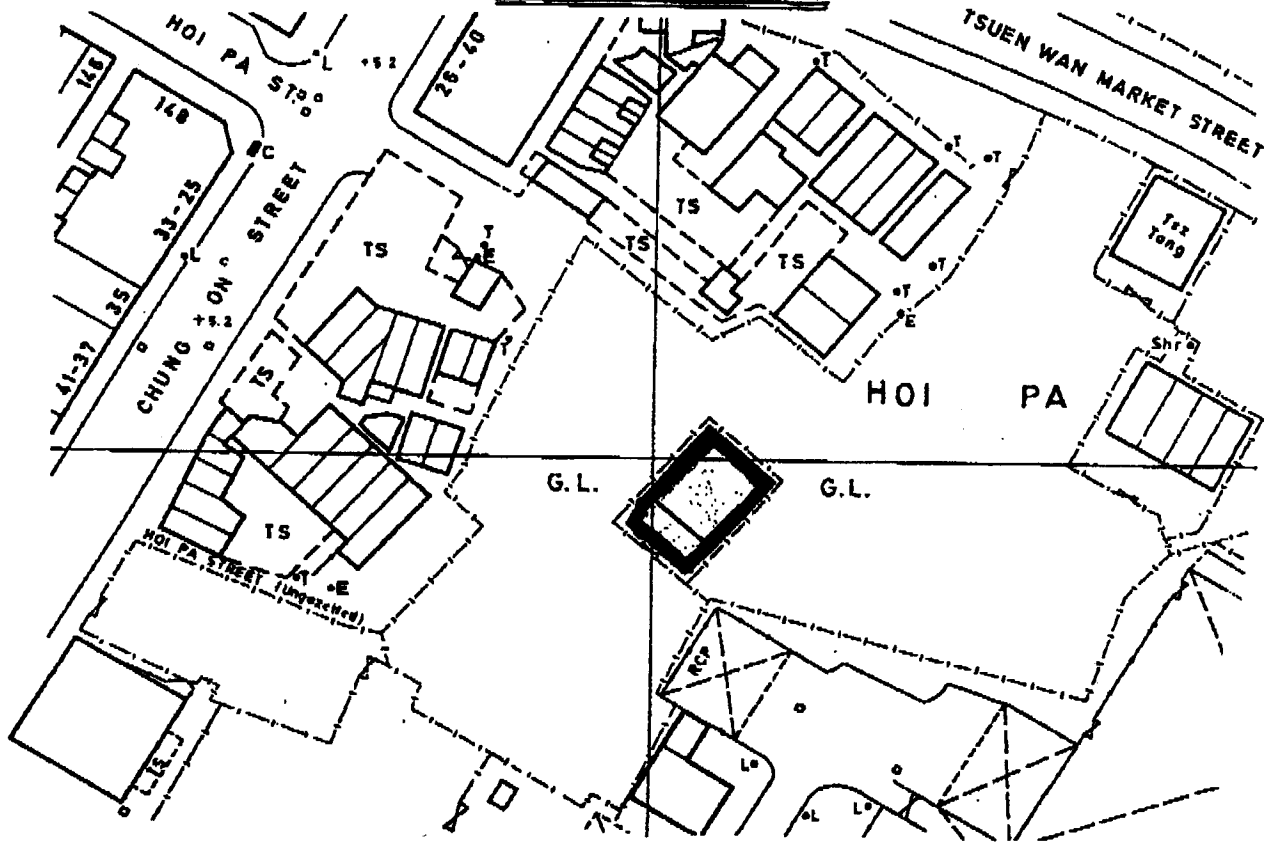


PLAN OF THE OLD HOUSE (FORMERLY AT LOT 917 IN D.D. 449).

HOI PA VILLAGE, TSUEN WAN, N.T.

DEPOSITED IN THE TSUEN WAN DISTRICT LAND OFFICE, UNDER SEC. 3(4)

SERIAL No. NTM 35



COLOURED PINK AREA 227 SQUARE METRES (ABOUT)
SCALE 1:1000

LOCATION



SCALE 1:20 000

Survey Sheet No. 7-SW-16C
File Ref. LND 819/NGS/63

S. Bruns

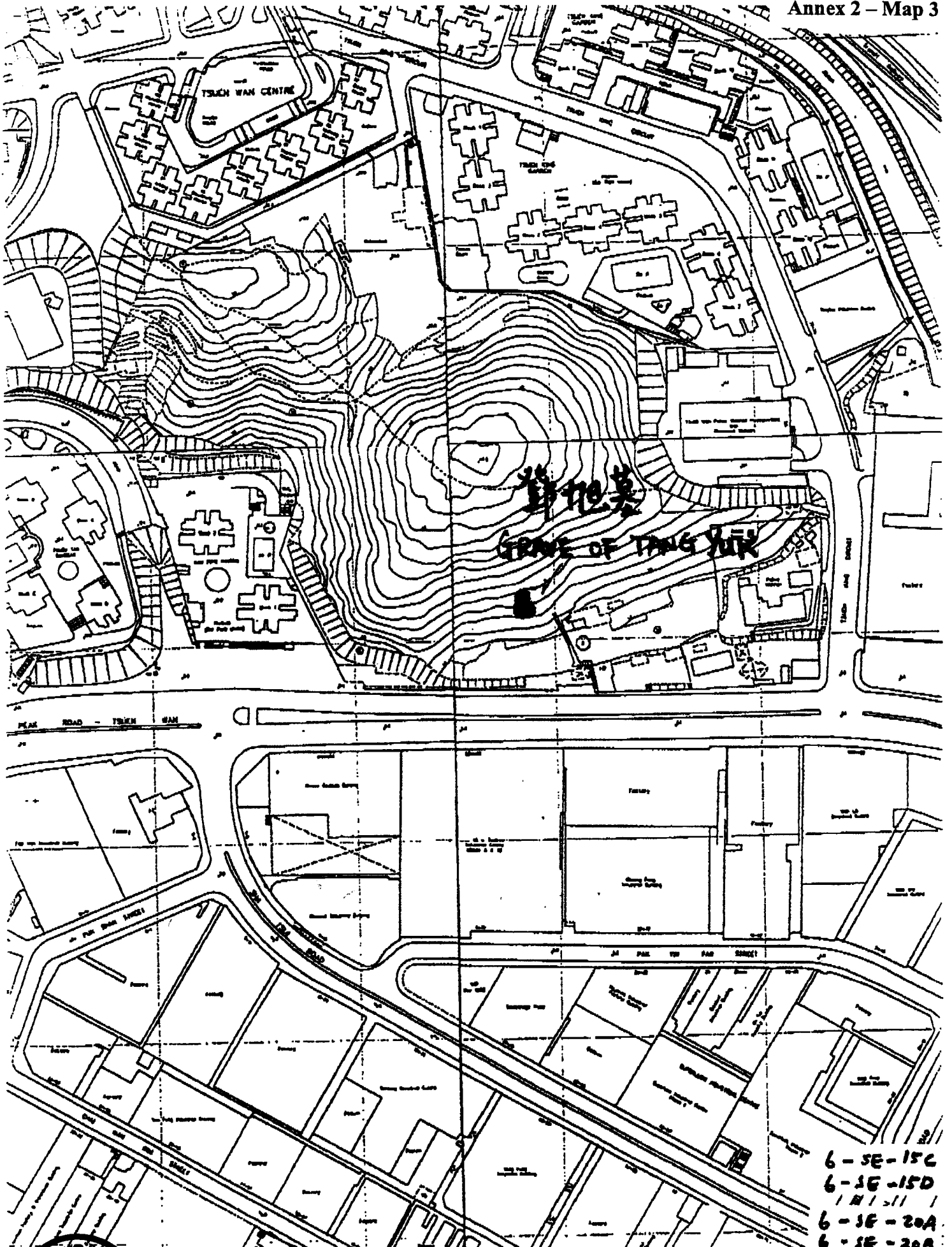
SECRETARY FOR MUNICIPAL SERVICES

Date 15 July 86

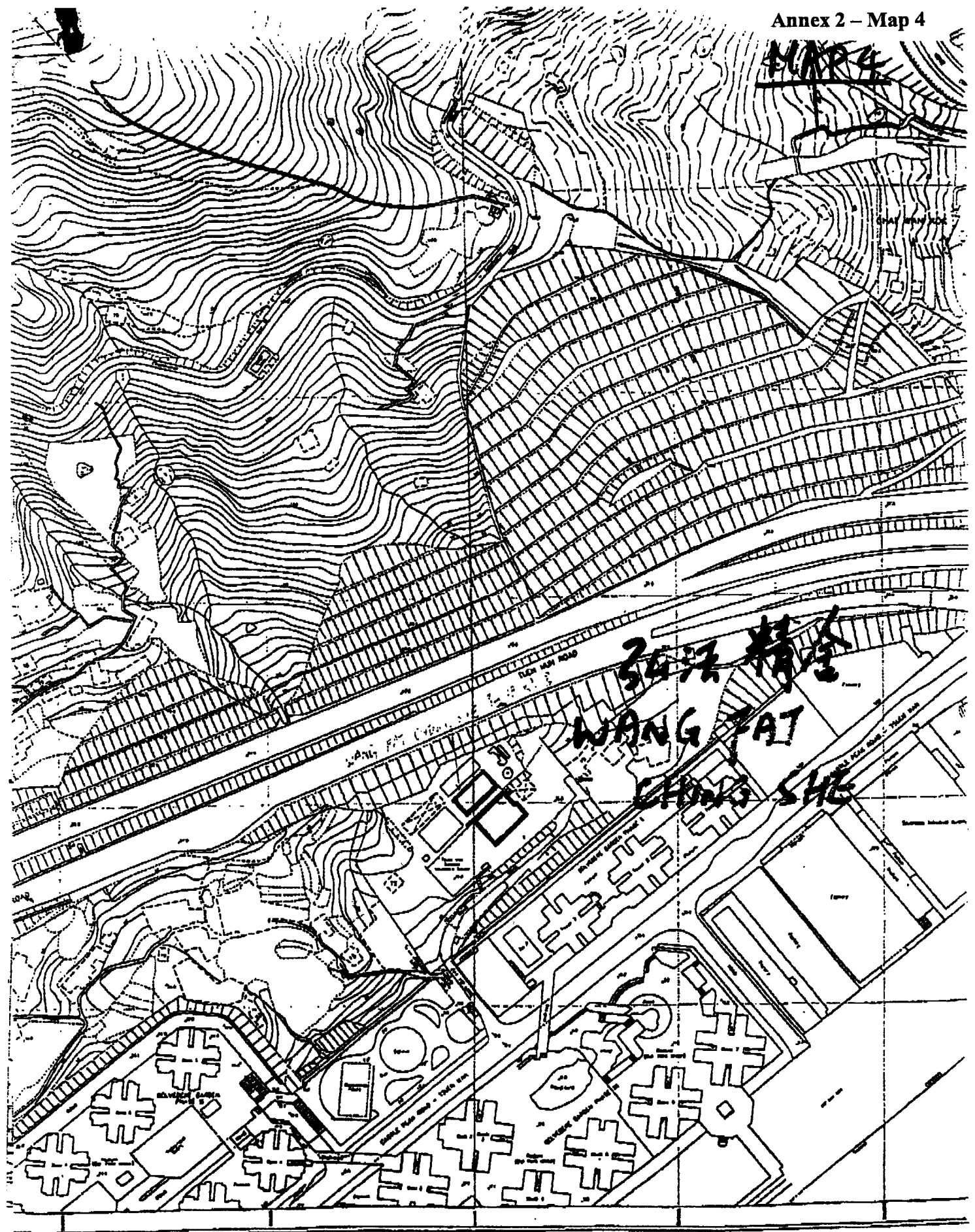
District Survey Office, Tsuen Wan, Buildings and Lands Department

35





MAP 4



6-SE-19B
6-SE-20A

