

**Contract No. : EP/SP/52/06**  
**Development of an EcoPark in Tuen Mun Area 38**

**ENVIRONMENTAL MONITORING AND AUDIT**

**MONTHLY EM&A REPORT for**

**DECEMBER 2006**

**Environmental Pioneers & Solutions Limited**  
8/F, Chaiwan Industrial Centre Building  
20 Lee Chung Street, Chaiwan, Hong Kong  
Tel: 2889 0569 Fax: 2856 2010

## **APPROVAL SHEET**

DOCUMENT DATE: 31 December 2006

Prepared and Certified by: ET Leader (Environmental Pioneers & Solutions Limited)

Signature: \_\_\_\_\_

Miss Patricia Chung

Date: \_\_\_\_\_

Verified by: \_\_\_\_\_

IEC

Date: \_\_\_\_\_

Approved by: \_\_\_\_\_

EcoPark Group

Date: \_\_\_\_\_

\* IEC – Independent Environmental Checker

**TABLE OF CONTENTS**

EXECUTIVE SUMMARY .....	4
1. BASIC PROJECT INFORMATION .....	6
2. SUMMARY OF WORK ACTIVITIES AND CONSTRUCTION STATUS.....	8
3. STATUS OF ENVIRONMENTAL PROTECTION AND SITE INSPECTIONS.	10
4. SUMMARY OF ENVIRONMENTAL PERMIT AND LICENCES.....	15
5. CUMULATIVE LOG OF COMPLAINTS AND REMEDIAL ACTION.....	16
6. CUMULATIVE LOG OF NOTIFICATION OF SUMMONS AND PROSECUTIONS .....	16
7. CONCLUSION .....	16
APPENDIX 1 - SITE LAYOUT PLAN.....	18
APPENDIX 2 - THE CONTACT PERSONS, TELEPHONE NUMBERS OF KEY PERSONNEL FOR DEVELOPMENT OF AN ECOPARK IN TUEN MUN AREA 38 .....	19
APPENDIX 3 - ORIGINAL LANDFILL GAS FIELD MEASUREMENT RECORDING SHEETS.....	20
APPENDIX 4 - LANDFILL GAS MEASUREMENT LOCATIONS .....	24
APPENDIX 5 – CUMULATIVE LOG OF COMPLAINTS .....	25

## **EXECUTIVE SUMMARY**

This is the sixth monthly Environmental Monitoring and Audit (EM&A) Report for the Environmental Protection Department Contract No. EP/SP/52/06 entitled “Development of an EcoPark in Tuen Mun Area 38”. (Environmental Permit No. EP-226/2005)

This report contains the results and findings of site inspection activities and EM&A works carried out by the Environmental Team (ET) of the Works Contractor as required in the contract during December 2006.

The site activities in the reporting period mainly consisted of site formation, excavation works, and construction of administration building, electrical sub-stations, drainage and sewerage, marine front management office and refuse collection points.

Disposal of inert C&D material was recorded. No substantial noise impact was noted by ET during weekly environmental site walks. Landfill gas monitoring was carried out at site; oxygen measurement results on 8, 13 and 20 December 2006 are below Action Level in accordance with the EM&A Manual. The Contractor was reminded to carry out the actions suggested in the EM&A Manual correspondingly for mitigation measure.

Insufficient water spraying on secondary access road was observed. The Contractor was reminded to install sprinkler system to enhance water spraying on secondary access road for better dust mitigation.

Underground water accumulated in the jacking pit FMH40 and the trench was discharged directly at the manhole without any treatment. The Contractor rectified this by using sedimentation tanks to treat underground water and then discharged at the manhole. Weekly water samples were taken by the ET at the discharge manhole, and some COD test results were not in compliance with WPCO-TM Standard.

Damage of silt curtain was observed and repair work was underway. The Contractor has to immediately repair silt curtain in order to prevent muddy discharge into sea.

There were no notification of summons or successful prosecution during December 2006.

The planned activities for January 2007 and February 2007 with regard to development of EcoPark consist of:

- 1) Excavation and Site Formation Works
- 2) Construction of Electrical Sub-stations
- 3) Construction of Drainage and Sewerage
- 4) Construction of Administration Building
- 5) Construction of Marine Front Management Office
- 6) Construction of Refuse Collection Points

## **1. BASIC PROJECT INFORMATION**

### **1.1 Introduction**

This is the sixth monthly Environmental Monitoring and Audit (EM&A) Report for the Environmental Protection Department Contract No. EP/SP/52/06 entitled “Development of an EcoPark in Tuen Mun Area 38”. The site layout plan is shown in Appendix 1. The report was prepared by the Environmental Team, Environmental Pioneers & Solutions Limited, of the Works Contractor, Kaden Construction Limited. The report is to be submitted to the Works Contractor, the Engineer and the Environmental Protection Department for the project.

This report presents the results of the environmental monitoring of the project activities conducted during the month of December 2006. This included regular site inspections once per week for verification of implementation of the mitigation measures as recommended in the EM&A Manual and the Contractor’s Environmental Management Plan (EMP).

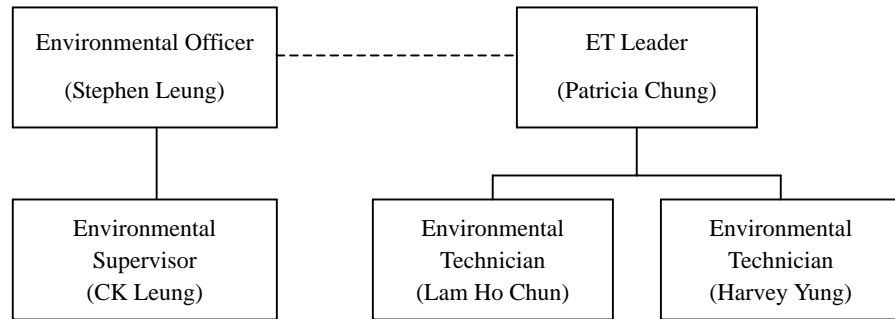
Phase 1 of the construction works has already commenced in July 2006 and is anticipated to complete in June 2007.

The contact person and telephone number of key personnel for the captioned project are shown in Appendix 2.

### **1.2 Project Organization and Management**

The Works Contractor has commissioned Environmental Pioneers & Solutions Limited as the Environmental Team, which comprises the environmental team leader and the environmental technicians to undertake the environmental monitoring and audit work for this project. The project Organization Chart of Environmental Team is shown in Figure 1.1.

Figure 1.1 Organization Chart of Environmental Team



## 2. SUMMARY OF WORK ACTIVITIES AND CONSTRUCTION STATUS

### 2.1 Works Undertaken during the Month

A summary of the site installation works in this month, with the information of locations, activities, equipment/materials and dates of occurrence, is provided by the Contractor, as shown in Table 2.1.

Table 2.1 Work Activities for December 2006		
Item	Work Activities & Location	Date of Occurrence
1	Site Formation Works, Excavation Works & Roadworks	1 December 2006 – 31 December 2006
2	Construction of Electrical Sub-stations, Administration Building, Refuse Collection Points and Marine Front Management Office	1 December 2006 – 31 December 2006
3	Construction of Drainage & Sewerage	1 December 2006 – 31 December 2006

Machineries		
	Equipment/ Plant	Quantity
1	Mobile Crane	2
2	Excavator	20
3	Generator	8
4	Air Compressor	2
5	Roller	6
6	Loader	2
7	Grab Lorry	2
8	Crane Lorry	3
9	Water Truck	1
10	Dump Truck	5

Remarks:

- As informed by the Contractor, most equipment are mobile at site subject to work progress.
- Refer to Appendix 1 – Site layout plan for location of construction activities.

### 2.2 Future Key Issues

The Contractor has provided an updated construction program in Table 2.2 to show the planned activities for the coming three months (January 2007 – March 2007). The anticipated environmental issues are summarized as follow:



Table 2.2 Construction Program and Anticipated Environmental Issues		
Item	Works	Anticipated Environmental Issues
1	Site Formation Works, Excavation Works & Roadworks	<ul style="list-style-type: none"> <li>- Generation of C&amp;D Waste; excavated material should be reused as much as practicable</li> <li>- Dust may be generated; the wheel washing machine should be in operation</li> <li>- Haul road should be sprayed regularly, by truck or sprinkler</li> <li>- Stagnant water should be removed</li> <li>- Mosquito mitigation measures should be implemented</li> </ul>
2	Construction of Electrical Sub-stations, Administration Building, Refuse Collection Points & Marine Front Management Office	<ul style="list-style-type: none"> <li>- Generation of waste from packaging materials and C&amp;D wastes</li> </ul>
3	Construction of Drainage & Sewerage	<ul style="list-style-type: none"> <li>- Generation of C&amp;D Waste; excavated material should be reused as much as practicable</li> <li>- Dust may be generated; the wheel washing machine should be in operation</li> </ul>

The site inspection schedule for the next month (January 2007) is designated on 3, 10, 17, 24 and 31 January 2007.

### 3. STATUS OF ENVIRONMENTAL PROTECTION AND SITE INSPECTIONS

#### 3.1 Environmental Site Inspections

Environmental site inspections are required to inspect the construction activities of the Development of EcoPark in order to ensure that appropriate environmental protection and pollution control mitigation measures are properly implemented.

Site inspections were conducted on 8, 13, 20 and 27 December 2006.

A detailed checklist of each site inspection together with comments, relevant photos and maps have been filed and kept.

The findings and results of site inspections are provided in Table 3.1:

Table 3.1 Summary of Site Inspections				
Date	Observations	Advice from ET	Outcome	Closing Date
8 Dec 06 13 Dec 06 20 Dec 06	Underground water was discharged directly at the manhole without any treatment	To treat underground water by using sedimentation tanks	Underground water was treated by sedimentation tank before discharging at the manhole	27 Dec 06
8 Dec 06 13 Dec 06	Damage of silt curtain was observed	To repair and maintain silt curtain properly in order to prevent muddy discharge at sea	Repair work was observed on 20 and 27 December 2006 and should be inspected in the next reporting period	--
27 Dec 06	Insufficient water spraying on secondary access road was observed	To install sprinkler system to enhance water spraying on secondary access road	Installation of sprinkler system was underway and should be inspected in the next reporting period	--
27 Dec 06	Wheel washing machine located at site entrance was removed due to site construction	To provide a new location plan for wheel washing machine and to use manual labour for wheel washing as temporary measure	Preparation of new location plan was underway and should be inspected in the next reporting period	--

### 3.2 Air Dust

Water spraying by water truck was observed for dust mitigation. However, insufficient water spraying on secondary access road was observed. The Contractor was reminded to install sprinkler system to enhance water spraying on secondary access road for better dust suppression.

Due to site construction, the wheel washing machine located at site entrance was removed. The Contractor has to immediately provide a new location plan for wheel washing machine and use manual labour for wheel washing as temporary measure.

### 3.3 Noise

The major noise source was vehicle movement, machinery, rock excavation and breaking in the EcoPark. Since the nearby NSRs were remote, the noise impact was minimal. There was no specific observation noted regarding noise issue. The Construction Noise Permit was issued to the Contractor on 29 August 2006.

### 3.4 Surface Water Quality

Underground water accumulated in the jacking pit FMH40 and the trench was discharged directly at the manhole without any treatment. The Contractor was reminded to treat underground water before discharging at the manhole. The Contractor rectified this by using sedimentation tanks to treat the water before discharged at the manhole.

Silt curtain was installed at the discharge point at Marine Front. Damage of silt curtain was observed and repair work was underway. The Contractor has to immediately repair the silt curtain in order to prevent muddy discharge at sea.

Chemical toilets (5 nos.) have been provided by a licensed contractor, of which sewage generated is collected every three to five days without causing contamination on surface water. The Effluent Discharge Licence was issued to the Contractor on 20 November 2006.

In December 2006, water sampling and analysis of Chemical Oxygen Demand (COD)

was carried out to confirm that dewatering discharge to stormwater drains meets the WPCO-TM Standard. Results are summarized in Table 3.3.

Table 3.3 Summary of COD Analysis in December 2006			
Sampling Location	Sampling Date	Chemical Oxygen Demand (COD) (mg O <sub>2</sub> /L)	WPCO-TM Standard COD (mg O <sub>2</sub> /L)
The Manhole near the Trench	08 Dec 06	<10	80
The Manhole near the Jacking Pit FMH41	08 Dec 06	<10	
The Manhole near the Jacking Pit FMH40	13 Dec 06	72	
The Manhole near the Jacking Pit FMH41	13 Dec 06	80	
The Manhole near the Jacking Pit FMH41	20 Dec 06	480	
The Manhole near the Jacking Pit FMH41	27 Dec 06	290	
The Manhole near the Launching Shaft	27 Dec 06	340	

The results of COD analysis on 20 and 27 December 2006 exceed the WPCO-TM Standard. ET has recommended the Contractor to enhance the wastewater treatment process, including the application of coagulation/ flocculation agent to enhance sedimentation. The Contractor has also been reminded that any extracted water not complying with the WPCO-TM Standard should not be discharged until appropriate facility is installed.

### 3.5 Visual and Landscape Impact

Hoarding was erected at the site egress and aligned along the site boundary along Lung Mun Road. Hoardings were specially designed to be movable for future re-use in other locations.

During site clearance, trees are relocated to be replanted for landscaping in the future in EcoPark.

### 3.6 Waste / Chemical Waste

The ET investigated an incident that dump truck originating from EcoPark site entering the public fill was not using mechanical cover. The Contractor has implemented visual inspection and will distribute flyers/ notices to ensure all dump trucks close mechanical covers when leaving EcoPark site.

As advised by the Contractor, there was no disposal of chemical waste in the reporting month. Separate waste collection bins were made available for collecting aluminum cans, waste paper and plastic bottles etc.

Two waste dumpers were used for the collection and storage of general waste. Temporary storage areas for waste metals and waste tyres were established.

The Contractor has provided sufficient drip trays for all (8 nos.) temporary electricity generators at site. These drip trays should be covered by tarpaulin sheet to minimize rainfall accumulation.

Excavated materials are reused as back-fill material to balance cut and fill and hence reduce the generation of materials. Surplus materials are returned to stock in centralized area with suitable protective measures. The Contractor was reminded to comply with the requirements and conditions for disposal at public fill facility and all oversized aggregates should be crushed to less than 250mm before delivering to the public fill.

Materials are recycled and re-used at site as much as practicable to minimize waste generation. Timbers are recycled to make temporary tools and assess ladders etc. Excavated rocks, concrete and asphalts are stored for future re-use in land formation and structural construction etc.

Registered waste collectors will be arranged to collect and transport the wastes whenever necessary.

Table 3.4 provides a summary table of waste disposal in December 2006. The Contractor has been reminded to keep good record at site in order to have a clear presentation of waste disposal.

Table 3.4 Summary of Waste Disposal in December 2006			
Type of Waste	Disposal Site	Quantity	Remarks
General Waste	WENT Landfill	50.3 tonnes	-
Inert C&D Material	Public Fill Facility	2105.4 tonnes	-

### 3.7 Landfill Gas

Landfill gas (LFG) monitoring was carried out at six (6) locations on site as instructed by the Engineer's Representative. LFG measurements on 8, 13, 20 and 27 December 2006 are summarized in Table 3.5, and original field measurement sheets are appended in Appendix 3. Measurement locations are shown in Appendix 4. Oxygen measurement results on 8, 13 and 20 December 2006 are below Action Level in accordance with the EM&A Manual (19%), as shown in Table 3.6. The Contractor was reminded to conduct the actions suggested in the EM&A Manual correspondingly for mitigation measure.

Table 3.5 Summary of LFG Measurement for December 2006						
Sampling Location	Date of Measurement	Sampling Time	Weather Condition	Methane (CH <sub>4</sub> ) %LEL	Carbon Dioxide (CO <sub>2</sub> ) %LEL	Oxygen (O <sub>2</sub> )
Point A	08 Dec 06	1150	Fine	0.0%	0.0%	18.4%
Point B1	08 Dec 06	1158	Fine	0.0%	0.0%	18.2%
Point B2	Not Accessible					
Point C1	08 Dec 06	1219	Fine	0.0%	0.0%	18.0%
Point C2	08 Dec 06	1215	Fine	0.0%	0.0%	18.0%
Point D	08 Dec 06	1230	Fine	0.0%	0.0%	18.1%
Point A	13 Dec 06	0943	Rainy	0.0%	0.0%	18.5%
Point B1	13 Dec 06	0948	Rainy	0.0%	0.0%	18.7%
Point B2	Not Accessible					
Point C1	13 Dec 06	0954	Rainy	0.0%	0.0%	18.8%
Point C2	13 Dec 06	0952	Rainy	0.0%	0.0%	18.7%
Point D	13 Dec 06	1012	Rainy	0.0%	0.0%	18.8%
Point A	20 Dec 06	1603	Fine	0.0%	0.0%	18.7%
Point B1	20 Dec 06	1608	Fine	0.0%	0.0%	18.8%
Point B2	Not Accessible					
Point C1	20 Dec 06	1612	Fine	0.0%	0.0%	18.6%
Point C2	20 Dec 06	1615	Fine	0.0%	0.0%	18.6%
Point D	20 Dec 06	1620	Fine	0.0%	0.0%	18.6%
Point A	27 Dec 06	0836	Fine	0.0%	0.0%	19.1%
Point B1	27 Dec 06	0803	Fine	0.0%	0.0%	18.7%
Point B2	27 Dec 06	0831	Fine	0.0%	0.0%	19.2%
Point C1	27 Dec 06	0819	Fine	0.0%	0.0%	19.1%
Point C2	27 Dec 06	0820	Fine	0.0%	0.0%	19.1%
Point D	27 Dec 06	0823	Fine	0.0%	0.0%	19.1%

Table 3.6 Action Levels, Limit Levels and Event and Action Plan for LFG (From EM&amp;A Manual)

Parameter	Level	Action
Oxygen	Action Level < 19% O <sub>2</sub>	Ventilate trench/ void to restore O <sub>2</sub> to > 19%
	Limit Level < 18% O <sub>2</sub>	Stop works Evacuate personnel/prohibit entry Increase ventilation to restore O <sub>2</sub> to > 19%
Methane (CH <sub>4</sub> )	Action Level >10% LEL	Post “No Smoking” signs Prohibit hot works Increase ventilation to restore CH <sub>4</sub> to <10% LEL
	Limit Level >20% LEL	Stop works Evacuate personnel/prohibit entry Increase ventilation to restore CH <sub>4</sub> to <10% LEL
Carbon Dioxide (CO <sub>2</sub> )	Action Level >0.5% CO <sub>2</sub>	Ventilate to restore CO <sub>2</sub> to < 0.5%
	Limit Level >1.5% CO <sub>2</sub>	Stop works Evacuate personnel/prohibit entry Increase ventilation to restore CO <sub>2</sub> to < 0.5%

#### 4. SUMMARY OF ENVIRONMENTAL PERMIT AND LICENCES

ET has checked with the Contractor for the status of all environmental permits and licenses for this project as at December 2006, which is summarized in Table 4.1. ET will follow the application process of the outstanding permits / licenses and will provide suitable assistance whenever appropriate.

Table 4.1 Summary of Environmental Permits/ Licences

Description	License / Permit No.#	Date of Issue	Date of Expiry	Status/Remarks
Environmental Permit	EP-226/2005	9-Sept-2005	--	Issued
Registration of Waste Producer	5111-421-K2869-02	27-Jul-2006	--	Issued
Construction Noise Permit	GW-RW0471-06	29-Aug-2006	28-Feb-2007	Issued
Effluent Discharge Licence	EP760/421/011762/I	20-Nov-2006	1-Dec-2011	Issued

## **5. CUMULATIVE LOG OF COMPLAINTS AND REMEDIAL ACTION**

The cumulative log of complaints is referred in Appendix 5.

## **6. CUMULATIVE LOG OF NOTIFICATION OF SUMMONS AND PROSECUTIONS**

No notification of summons and no prosecutions occurred during December 2006.

## **7. CONCLUSION**

There is no summon nor prosecutions reported during December 2006.

Water spraying by water truck was observed. However, insufficient water spraying on secondary access road was observed. The Contractor was reminded to install sprinkler system to enhance water spraying on secondary access road for better dust mitigation.

Wheel washing machine located at site entrance was removed due to site construction. The Contractor has to provide a new location plan for wheel washing machine and to use manual labour for wheel washing as temporary measure.

Underground water accumulated in the jacking pit FMH40 and the trench was discharged directly at the manhole without any treatment. The Contractor was reminded to treat underground water before discharging at the manhole. The Contractor rectified this by using sedimentation tanks to treat underground water and then discharged at the manhole. Weekly water samples were taken by the ET at the discharge manhole, and some COD test results were not in compliance with WPCO-TM Standard. ET has recommended enhanced treatment method to the Contractor such as application of more effective wastewater treatment system and coagulation/ flocculation agent for better sedimentation.

Damage of silt curtain was observed and repair work was underway. The Contractor has to immediately repair silt curtain in order to prevent muddy discharge into sea.

Daily landfill gas monitoring was carried out by the Contractor on site and oxygen measurement results on 8, 13 and 20 December 2006 are below action level in accordance with EM&A Manual. The Contractor was reminded to conduct the actions

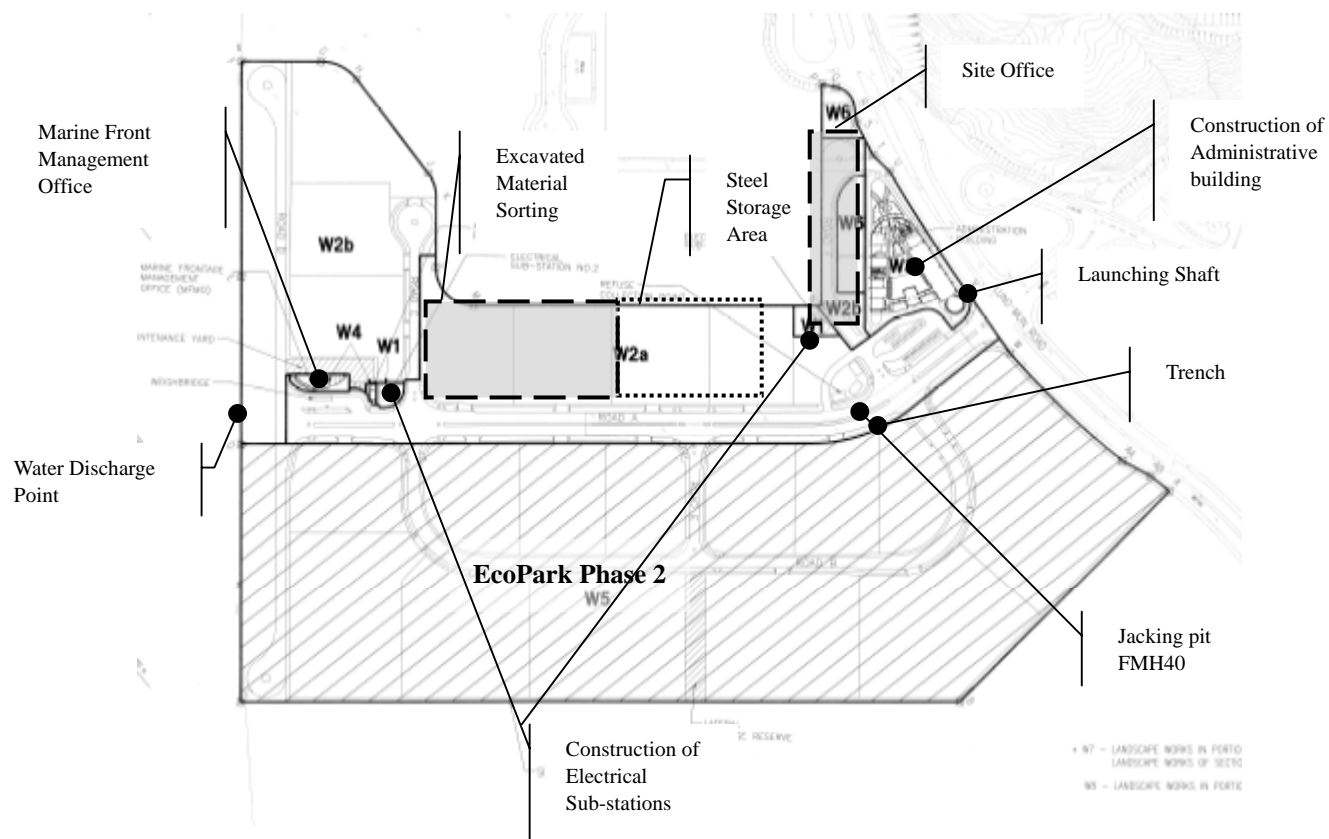


suggested in the EM&A Manual correspondingly for mitigation measure.

The Contractor was advised to pay more efforts on environmental concerns and awareness such as the accumulated rainwater or stagnant water found at site that could cause the problem of mosquito breeding.

The Contractor has been using the waste management and record system including allocation of waste storage areas and the trip ticket system as proposed in the Environmental Management Plan.

## APPENDIX 1 - SITE LAYOUT PLAN



**APPENDIX 2 - THE CONTACT PERSONS, TELEPHONE NUMBERS OF KEY PERSONNEL FOR DEVELOPMENT OF AN ECOPARK IN TUEN MUN AREA**

**38**

<b>Company/Department</b>	<b>Name</b>	<b>Position</b>	<b>Telephone</b>
Scott Wilson Ltd.	Mike Bains	Independent Environmental Checker	--
Scott Wilson Ltd.	Mr. Michael Lo	Senior Resident Engineer	6290 8860
Scott Wilson Ltd.	Mr. Andy Cheung	Resident Engineer	6111 9703
Scott Wilson Ltd.	Mr. C S Lam	Senior Inspector of Works	9861 8011
Kaden Construction Limited	Mr. K M Book	Project Manager	9193 8680
Kaden Construction Limited	Mr. Stephen Leung	Section Agent	9071 7657
Environmental Pioneers & Solutions Limited	Miss. Patricia Chung	Environmental Team Leader	2185 0123
Environmental Pioneers & Solutions Limited	Mr. Harvey Yung	Environmental Technician	2185 0172
Environmental Pioneers & Solutions Limited	Mr. Lam Ho Chun	Environmental Technician	2185 0154

**APPENDIX 3 - ORIGINAL LANDFILL GAS FIELD MEASUREMENT  
RECORDING SHEETS**

Kaden Construction Limited 基利建築有限公司

EPD Contract No. EP/SP/52/06

Job No. K0603

環保署合約編號 EP/SP/52/06

工程編號 K0603

Development of EcoPark in Tuen Mun Area 38 屯門38區環保園

**Daily Air Monitoring  
每日空氣監測記錄**

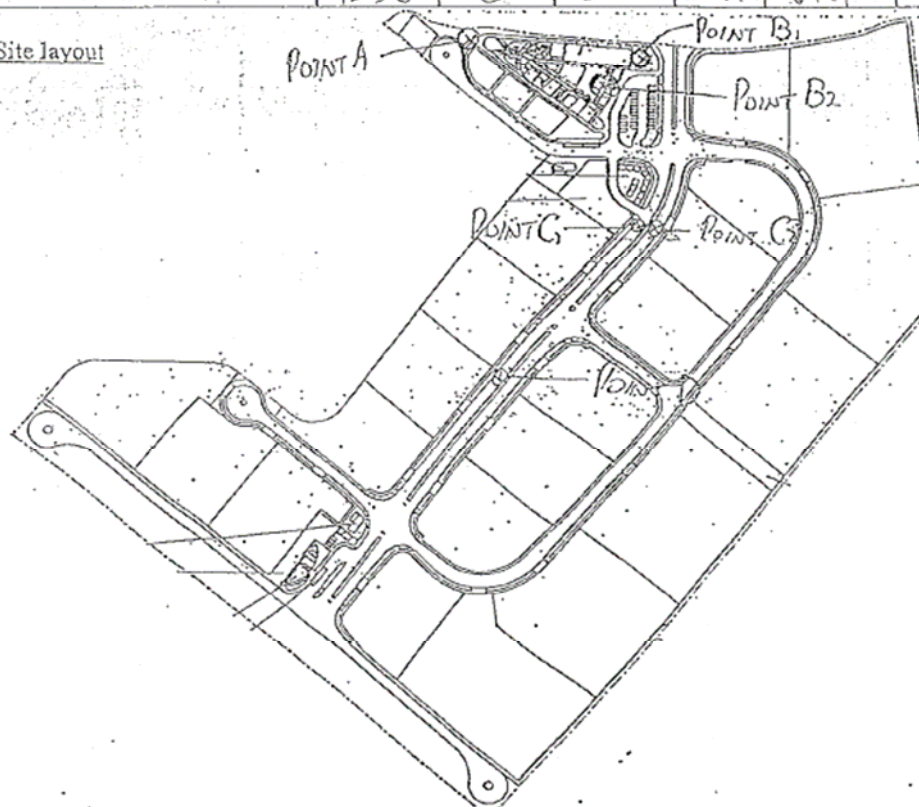
Detector: Model 型號: GEM 2000	Last calibration 上次檢測: 01 October 2006
測試器 S/N 編號: GM-08793	Next calibration 下次檢測: 01 April 2007

Date of Monitor 監測日期: 8-12-2006

Performed by: Harvey Yung (EPD)

Location 位置	Time 時間 (hrs)	Result 結果				
		CH <sub>4</sub> (%)	CO <sub>2</sub> (%)	O <sub>2</sub> (%)	Bal. Gas (%)	Baro. Pressure (“Hg)
Point A	1150	0	0	18.4	81.5	30.02
Point B1	1158	0	0	18.2	81.7	30.02
Point B2 (Rainwater retention tank)	Not accessible					
Point C1 (FMH041)	1219	0	0	18.0	82.0	29.99
Point C2 (FMH040)	1215	0	0	18.0	82.0	29.99
Point D	1230	0	0	18.1	81.9	29.99

Site layout





Kaden Construction Limited 基利建築有限公司

EPD Contract No. EP/SP/52/06

Job No. K0603

環保署合約編號 EP/SP/52/06

工程編號 K0603

Development of EcoPark in Tuen Mun Area 38 屯門 38 區環保園

Daily Air Monitoring  
每日空氣監測記錄

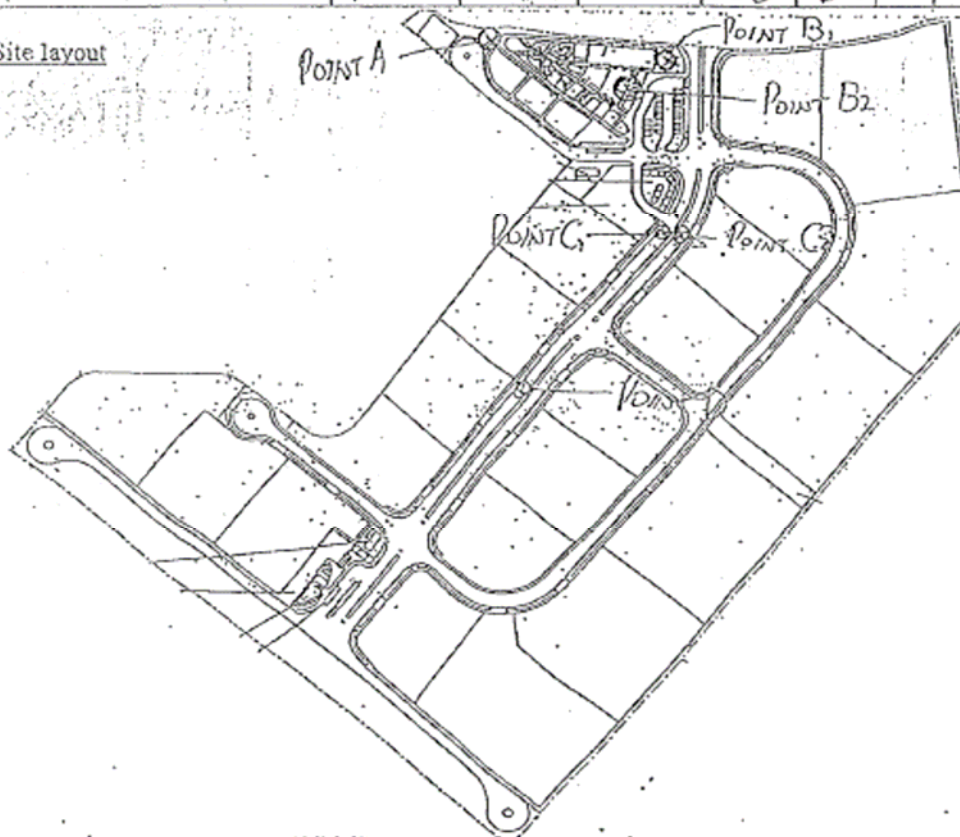
Detector: 測試器	Model 型號: GEM 2000	Last calibration 上次檢測: 01 October 2006
	S/N 編號: GM-08793	Next calibration 下次檢測: 01 April 2007

Date of Monitor 監測日期: 13-12-2006

Performed by: MHe

Location 位置	Time 時間 (hrs)	Result 結果				
		CH <sub>4</sub> (%)	CO <sub>2</sub> (%)	O <sub>2</sub> (%)	Bal. Gas (%)	Baro. Pressure (“Hg)
Point A	9:43	0	0	18.5	81.4	30.06
Point B1	9:48	0	0	18.7	81.3	30.06
Point B2 (Rainwater retention tank)	not	accessible				
Point C1 (FMH041)	9:54	0	0	18.8	81.2	30.06
Point C2 (FMH040)	9:52	0	0	18.7	81.2	30.06
Point D	10:12	0	0	18.6	81.1	30.04

Site layout





Kaden Construction Limited 基利建築有限公司

EPD Contract No. EP/SP/52/06 Job No. K0603

環保署合約編號 EP/SP/52/06 工程編號 K0603

Development of EcoPark in Tuen Mun Area 38 屯門38區環保園

Daily Air Monitoring  
每日空氣監測記錄

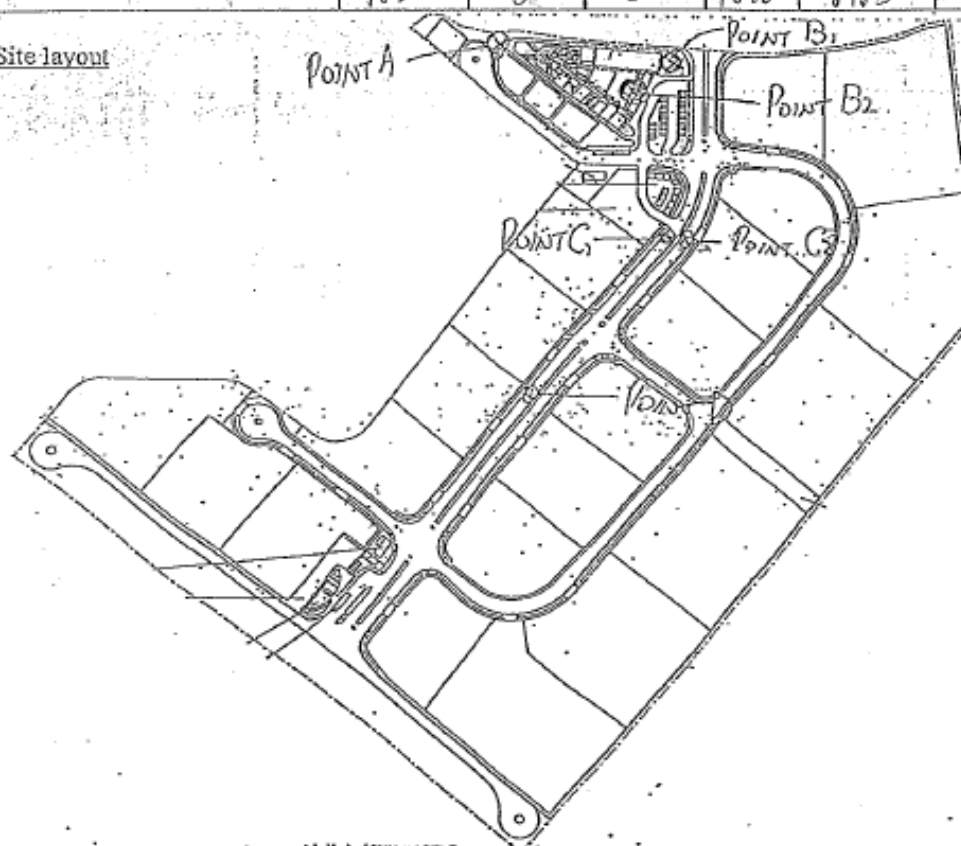
Detector: 測試器	Model 型號: GEM 2000	Last calibration 上次檢測: 01 October 2006
	S/N 編號: GM-08793	Next calibration 下次檢測: 01 April 2007

Date of Monitor 監測日期: 20 - 12 - 2006

Performed by: Henry Lam (EPS)

Location 位置	Time 時間 (hrs)	Result 結果				
		CH <sub>4</sub> (%)	CO <sub>2</sub> (%)	O <sub>2</sub> (%)	Bal. Gas (%)	Baro. Pressure (mmHg)
Point A	16:03	0	0	18.7	81.1	30.11
Point B1	16:08	0	0	18.8	81.2	30.11
Point B2 (Rainwater retention tank)	Not accessible					
Point C1 (FMH041)	16:12	0	0	18.6	81.3	30.11
Point C2 (FMH040)	16:15	0	0	18.4	81.3	30.11
Point D	16:20	0	0	18.6	81.3	30.11

Site layout







Kaden Construction Limited 基利建築有限公司

EPD Contract No. EP/SP/52/06

Job No. K0603

環保署合約編號 EP/SP/52/06

工程編號 K0603

Development of EcoPark in Tuen Mun Area 38 屯門 38 區環保園

### Daily Air Monitoring 每日空氣監測記錄

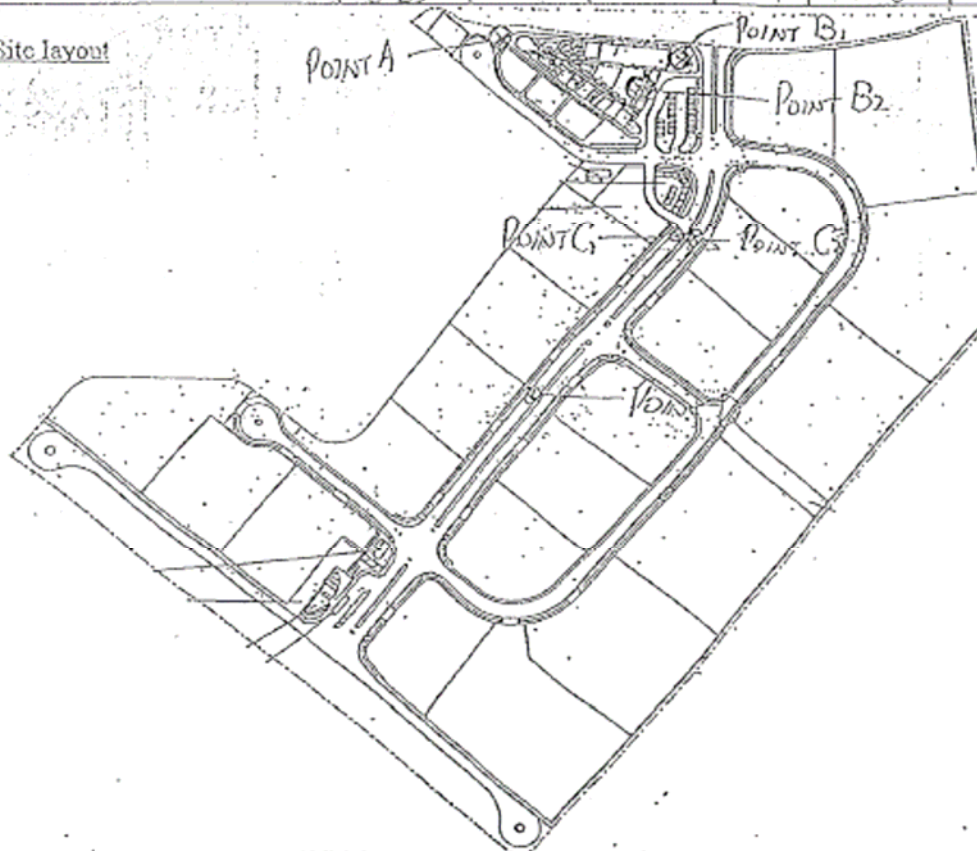
Detector: 測試器	Model 型號: GEM 2000	Last calibration 上次檢測: 01 October 2006
	S/N 編號: GM-08793	Next calibration 下次檢測: 01 April 2007

Date of Monitor 監測日期: 24-12-2006

Performed by: Mike

Location 位置	Time 時間 (hrs)	Result 結果				
		CH <sub>4</sub> (%)	CO <sub>2</sub> (%)	O <sub>2</sub> (%)	Bal. Gas (%)	Baro. Pressure ("Hg)
Point A	8:36	0	0	19.1	80.9	30.05
Point B1	8:05	0	0	18.9	81.2	30.05
Point B2 (Rainwater retention tank)	8:31	0	0	19.2	80.8	30.05
Point C1 (FMH041)	8:19	0	0	19.1	80.9	30.05
Point C2 (FMH040)	8:20	0	0	19.1	80.8	30.05
Point D	8:23	0	0	19.1	80.8	30.05

Site layout



[illegible]



**APPENDIX 5 – CUMULATIVE LOG OF COMPLAINTS****CUMULATIVE LOG OF COMPLAINTS**

<b>Environmental Parameters</b>	<b>No. of Outstanding Complaints</b>	<b>No. of complaints received in December 2006</b>	<b>Cumulative no. of complaints received since the commencement of project</b>
Air	0	0	1
Noise	0	0	0
Water	0	0	0
Waste	0	0	0
Total	0	0	1

# **DETAILS OF COMPLAINTS AND REMEDIAL ACTIONS**

<b>Log Ref.</b>	<b>Date of Compliant received</b>	<b>Location</b>	<b>Complainant /Date</b>	<b>Details of Complaint</b>	<b>Investigation /Mitigation Action</b>	<b>Investigated by/ Date</b>
--	--	--	--	--	--	--